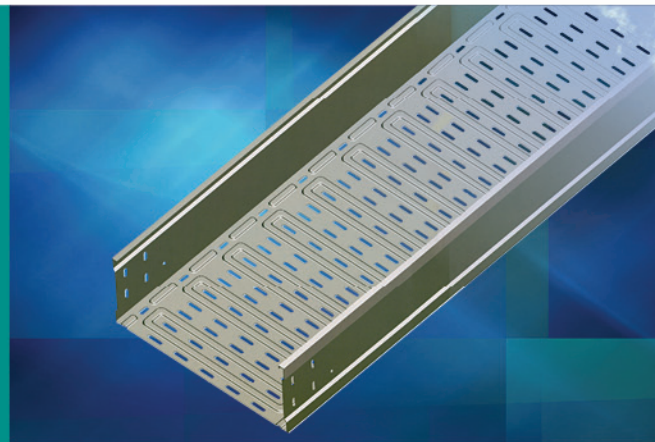


诚信卓越 士林伟业
GOOD FAITH & GREAT SHILIN



新型强载电缆桥架

New-type Strong Load Cable Tray



江苏士林电气集团有限公司
JIANGSU SHILIN ELECTRIC GROUP CO., LTD.



德者居上 智者在侧 能者居前

The moral are on the top The wise are at the side The capable are at the front



只有站在顾客的角度着想，
才能真正赢得市场。
士林严格按照国家规格的有关标准，
本着方便用户、服务大众的原则，
并根据客户的需求不断创新，
提高整体服务水平，
以优质的服务提升了品牌附加值。

Only standing in the customer' s point of view can win the market.
Based on the principle of being convenient for the customer and serving the public,
SHILIN innovates continuously, improves overall standard of service in strict accordance
with relevant standards and customers' requirement .
The brand added-value has been enhanced with high-quality service.

新技术，新产品——铸就桥架行业的新标准

SLJ系列节能轻质高强桥架产品的新颖性在于根据材料力学的原理，采用凸凹瓦楞机构代替传统的平板结构，从而大大提高了桥架的机械强度，降低了钢板使用厚度，减轻了自重。为推广新技术新工艺的问世，杜绝由于标准的局限制约新技术的发展，国家发改委在2004年6月17日批准发布JB/T10216-2000标准第一号修改单，并将4.3.4整个条款内容更换为：“钢制、托盘、梯架板材厚度的选择应能承受电线电缆所产生的正常机械负荷具有一定的抗腐蚀裕度”列为《机械行业节能设计规范》标准。随着新标准规范的实施，节能轻质高强电缆桥架将会为社会创造不可限量的经济效益。

轻质高强——节约资源，力学科技

轻钢结构是现代潮流，是科技的象征。采用轻钢结构建造的大型体育馆、展览中心、机场及摩天大厦，是现代科技的亮点，给世界增添了秀丽的风光。为增加强度，减少自重，集装箱采用瓦楞轻钢结构，使物流经济效益得到提高。轻质高强电缆桥架是由凸凹瓦楞结构组成，在确保产品质量，使用功能进一步提高的前提下，强度大幅度提高，自重降低30%以上，给用户在安装、运输、装卸等方面，带来极大的方便，高空安装作业尤为突出。产品经江苏省产品质量监督检验中心所检测，各项技术指标优于普通的桥架产品，卓越的性能、全新的工艺，使产品价值超过了它的价格，我们将以优惠的价格给予广大用户最大的实惠。

防腐耐蚀——环境友好，一劳永逸

公司率先采用欧美市场广泛使用的节能环保产品锌基涂镀，该科技一直以来在国内桥梁、汽车和机场等场所的使用并具备自动修复效果，达到国际先进水平，使桥架的抗腐性能大幅度提高，达到高长效抗腐作用，经机械工业电工产品环境适应性检测中心3000h盐雾试验、1000h化学腐蚀气体（SO₂）试验、240h酸碱介质浸泡试验、12周期交变湿热试验，无腐蚀现象。经对比试验检验数据表明，该镀涂层的抗腐性能是热镀锌的20倍以上。随着CECS: 31-2006《钢制电缆桥架工程设计规范》颁布实施，其中对桥架表面防腐质量要求的提高，锌基涂镀节能桥架将成为工程建设中不可替代的选择。

新颖设计——给你的建筑增加一道风景线

轻质高强电缆桥架以全新的工艺、全新的结构，给人以耳目一新的感觉，其造型和外观具有鲜明的立体感，安装使用后，带给人们如艺术品般的观感享受。整个产品的构造合理、工艺先进，填补了国内外同类产品的空白。



New technology and new product create industrial new standard of cable tray

The novelty of energy-saving light-weight and high-strength cable tray product of SLJ series is the adoption of convex- concave corrugated mechanism instead of the traditional plane structure according to the principle of material mechanics, thus greatly improving the mechanical strength of the cable tray, reducing the thickness of the steel plate and its weight. In order to promote the advent of new technology and new process and put an end to the restriction of new technology development because of the limitations of standard, the NDRC approved the release of modification list No.1 of JB/T10216-2000 standard on June 17, 2004. And the whole content of clause 4.3.4 is changed to "the selection of plate thickness of steel tray and ladder should bear the normal mechanical load generated by wires and cables and has certain corrosion allowance", which is listed as the standard of energy-saving design specification for machinery industry. With the implementation of the new standard, the energy-saving, light-weight and high-strength cable tray will create unlimited economic benefits for the society.

Light weight and high strength--resource-saving, mechanical technology

Light weight steel structure is a modern trend and a symbol of science and technology. The stadium, exhibition center, airport and skyscraper built with lightweight steel structure are the highlights of modern science and technology, adding beautiful scenery to the world. In order to increase the strength and reduce its weight, the container adopts corrugated lightweight steel structure to improve the economic benefit of logistics. Light -weight and high- strength cable tray is composed of convex- concave corrugated structure .On the premise of ensuring product quality and further improvement of using function, the strength is greatly improved and its weight is reduced by more than 30%, which brings great convenience to users in installation, transportation, loading, unloading and so on. The products have been tested by Product Quality Supervision and Inspection Center of Jiangsu Province and the technical indicators are superior to the normal cable tray products. The excellent performance and brand new technology make the product value exceed its price. We will give customers greatest benefit with preferential price.

Corrosion prevention, friendly to the environment, once and for all

Our company takes the lead in adopting Zinga for energy saving and environment friendly products widely used in European and American markets .The technology has been used in bridges, cars, and airports and other places all the time in China and has automatic repair effect, reaches the international advanced level, makes the anticorrosion performance of cable tray greatly improved and reaches high and long-term anticorrosion effect.3000hours' salt spray test, 1000hours' chemical etching gas (SO 2) test, 240hours' acid and alkali medium soaking test and damp heat test of 12 cycles have been conducted in the Environmental Adaptability testing center for electrical products of mechanical industry and there is no corrosion . By comparison of the test data, it shows that the corrosion resistance of the coating is more than 20 times of hot galvanizing. With the promulgation and implementation of CECS: 31-2006 "design specification for steel cable tray engineering ", the quality requirement of anti-corrosion for the cable tray surface is improved and Zinga energy-saving cable tray will become an irreplaceable choice in engineering construction

Novel design makes your building more beautiful

Light-weight and high-strength cable tray with new technology and new structure give you a sense of fresh. Its shape and appearance has a distinct three-dimensional feeling and brings people impression and enjoyment like works of art after installation. The reasonable structure and advanced technology of the whole product fill the blank of similar products at home and abroad.

公司简介

Company Introduction

在中国第一个生态环境市，长江中下游第二大岛 ---- 江苏省扬中市境内有一家集输配电成套、电力电气、太阳能组件等产品研发、制造、销售、服务于一体的国家级高新技术企业，这就是 ---- 江苏士林电气集团有限公司。

公司注册资金 10018 万元，总资产 6 亿元，厂区占地面积 11 万余平方米，建筑面积 8 万平方米。现有员工 1000 余人，其中高级工程师 20 人，工程师 42 人，其他各类专业技术人员 286 人，综合实力年产能 50 亿元，公司通过了 ABS 美国船级社质量管理体系认证、ISO9001 质量体系认证、ISO14001 环境管理体系认证和“CCC”产品强制认证。全部产品均通过了国家或行业最新标准检测，公司连续多年被评为“江苏省明星企业”“江苏省知名企业”、“质量信用 AAA 级”、“重合同、守信用企业”及省市“AAA”资信企业。拥有七十余项国家专利，多项产品获得省和国家的高新技术产品称号，公司自主研发的管型母线获江苏省科学技术奖、江苏省专精特新产品。

江苏士林电气集团有限公司与西门子电气、ABB 电气等企业强强联合，在国内外市场上共同生产和合作经营各类电气产品。长期以来公司以“科技是第一生产力”为指导思想，以不断创新的理念，精益求精的态度，现代化的管理手段，为广大用户专业化制造：高低压配电柜、高压绝缘管母线、风电专用管母线、照明母线、密集型母线槽、IP68 防水、浇注、防腐母线槽、耐火电缆桥架、一次滚压成型环形筋节能高强电缆桥架、支架等系列产品。特别是公司生产的绝缘管母线、浇注防水母线是国内生产规模最大，产品系列最齐全且专利技术在国内外处领先地位的高新技术产品，在工控、供配电等领域享有较高的知名度和市场占有率。

公司先进的创新技术和卓越的品质，成就了“士林品牌”，遍布全国各大城市的营销服务网络，确保了“士林产品”和“士林服务”在行业中的排头兵地位；士林的产品被广泛应用于国内举世瞩目的大型项目——上海世博会、南京青奥会、田湾核电站……士林的用户遍布：高铁、地铁、高速公路、发电系统、造船汽车、工矿石油化工、和政府工程等各个领域并获得一致好评。

“士林电气”始终秉承“专业、品质、共赢”的企业理念，汇集国内外精英才俊，走自主创新发展之路，实现士林电气工程技术和专业化服务技术的双提升，达到士林产品从“士林制造”到“士林创造”的新发展，在中国电气产业中，展示自己的综合实力和高端水平。

公司主要产品有

一、配电类

1. 10KV~35KV 的 KYN61、KYN28、XGN 等系列固定式、手车式高压柜；SLN2X 环保充气柜、SLGIS 充气柜、HXGN-C、F、V 系列环网单元；8PT、MDmax、MNS、GCS、GCK、GGD 等系列高级型低压开关柜。

2. XLC/A 密集型母线槽、CFW 高强封闭母线槽、CMLJ 新型节能母线槽、IP68 防腐防水 DCL 母线、NHJX 金属耐火母线槽、NHSX 树脂耐火母线槽、NHZX 照明耐火母线槽、SL-KB 照明母线槽、GCL 高压共相树脂浇注母线槽、GGM 绝缘管母线、800MW 发电机组离相封闭母线、FGM 风力发电绝缘管母线。

二、桥架类

1. SLJ-DJ 大跨距电缆桥架
2. SLJ-U、T、H 型电缆桥架
3. SLJ-ZBQ 玻璃钢阻燃防腐桥架
4. SLJ-LQJ 铝合金防腐桥架
5. SLJ-HQ 核级桥架
6. NDCH 系列耐火桥架
7. TA 系列船用桥架

公司热诚欢迎与各大设计院所、广大用户和关心和支持士林发展的社会精英真诚合作，携手致力于我国电气事业的发展和繁荣。



Company Profile

There is a national high-tech enterprise integrating research & development, manufacture, sale and service of complete set of power transmission and distribution product, electric product, solar energy components and so on in Yangzhong City which is the first ecological city of China, the second largest island in the middle and lower reaches of Yangtze River, Jiangsu province. That is Jiangsu Shilin Electric Group Co., Ltd.

The registered capital of the company is 100.18 million and the total asset is 0.6 billion. The factory covers an area of 110,000 square meters and the building area is 80,000 square meters. There are around 1000 employees, 20 of them are senior engineers, 42 of them are engineers and 286 of them are other kinds of professional technicians. The annual production is 5 billion. The company has passed ABS quality management system certification, ISO9001 quality system, ISO14001 environment management system and CCC. All products passed the test of national or industrial latest standard. The company was awarded as "Star Enterprise of Jiangsu Province", "Well-known Enterprise of Jiangsu province", "AAA of Quality Credit", "Enterprise honoring the contract and keeping the promise" and "AAA" credit. We have more than 70 national patents. A number of products were named as national and provincial high-tech product. The tubular busbar independently researched and developed by our company has won Science and Technology Award of Jiangsu Province and been certified as professional, unique, superior and new product of Jiangsu Province.

Jiangsu Shilin Electrical Equipment Co., Ltd. is strongly associated with Siemens electric, abb electric and other enterprises to jointly produce and cooperate in various electrical products in domestic and foreign markets. Taking "Science and technology are the primary productive force" as the guiding ideology and adhering to the concept of constant innovation, the attitude of keeping on improving and using modernized management method, the company specially produces the following product for users: high & low voltage power distribution cabinet, high-voltage insulating tubular busbar, tubular busbar for wind power, lighting busbar, compact bus duct, pouring waterproof and corrosion proof bus duct with IP68, fire-resistant cable tray, roller forming ring rib, energy saving high-strength cable tray, support and so on. Especially, the insulating tubular busbar and pouring waterproof busbar manufactured by the company are high-tech products that the production scale is largest in China, the series is most complete and the patent technology takes the leading position at home and abroad and have high popularity and market share in the field of industrial control, power supply and distribution.

The advanced innovative technology and excellent quality makes the achievement of "SHILIN brand" and the marketing and service network in all over Chinese big cities guarantees the leading position of "SHILIN product" and "SHILIN service" in this industry. The product produced by SHILIN is widely applied in the national remarkable big projects---Shanghai World Expo, Nanjing Youth Olympic Games, Tianwan Nuclear plant and so on. The users of SHILIN product spreads over high-speed railway, metro, expressway, power generation system, ship building, automobile, mining industry, petroleum, chemical industry, government project and highly praises the product.

SHILIN Electric always adheres to the business concept of profession, high quality and win-win, employs elites at home and abroad, takes the developing way of independent innovation to realize the promotion of electric engineering technology and specialized service technology, reach the new development from "made in SHILIN" to "invent in SHILIN" and show comprehensive strength and high standard in China's electric industry.

The main products of the company are as follows

一、 power distribution product

1. 10kV~35kV KYN61, KYN28, XGN and other series fixed and handcart high voltage cabinets; SLN2X environmental protection inflatable cabinet, SLG13 inflatable cabinet, hxgn-c, F and V series ring network units; 8PT, MDmax, MNS, GCS, GCK, GGD and other series of advanced low-voltage switchgear.

2. XLC/A compact bus duct, CFW high-strength enclosed bus duct, CMLJ new energy-saving bus duct, corrosion proof and waterproof DCL busbar with IP68, NHJX metal fire resistant bus duct, NHSX resin fire resistant bus duct, NHZX lighting fire resistant bus duct, SL-KB lighting bus duct, GCL high-voltage common enclosed bus duct casted with resin, GGM insulating tubular busbar, isolated-phase busbar of 800MW generator unit, FGM wind power generation insulating tubular busbar.

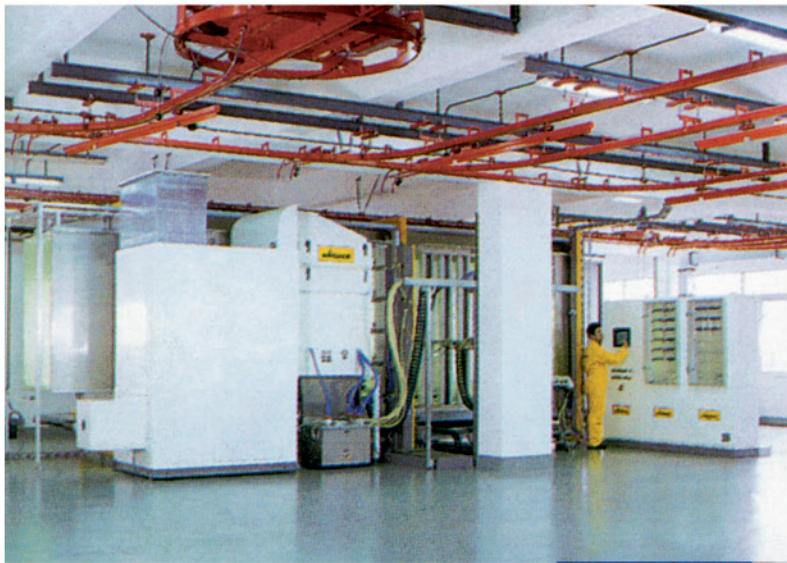
二、 cable tray

1. SLJ-DJ long-span cable tray
2. SLJ-U, TandH cable tray
3. SLJ-ZBQ FRP flame retardant and corrosion proof cable tray
4. LJ-LQJ aluminum alloy corrosion proof cable tray
5. SLJ-HQ uncommon cable tray
6. NDCH fire resistant cable tray
7. TA marine cable tray

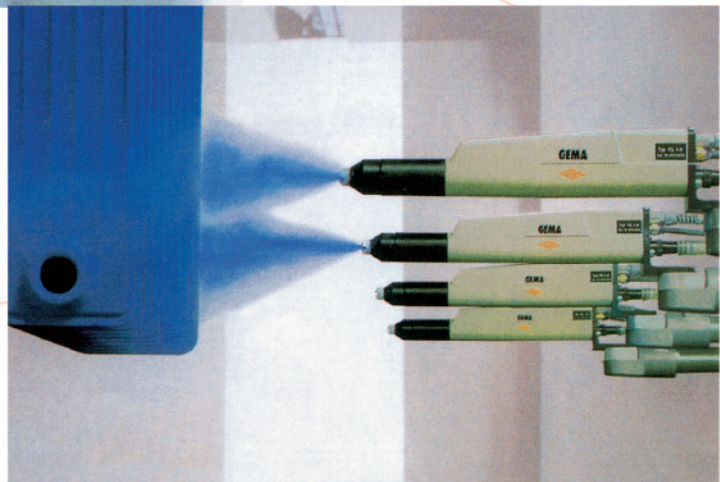
Warmly welcome to cooperate with each design institute, user and social elites who support the development of SHILIN to work together for the development and prosperity of our country's electric industry.



桥架自动成型生产线
automatic production line of cable tray



自动化喷涂车间
automatic painting workshop



强大的承载能力

新型强载电缆桥架，在同等料厚、同等规格情况下，具有更强大的承载能力，可大大提高工程中敷设电缆的能力，降低投入成本。

高品质的表面处理

为满足不同环境，不同工程的防护要求，可进行喷塑，热浸锌，电镀锌，双金属复合涂层等多样化的处理方式。环保型的喷塑处理工艺，提高了工程的品质，符合国家对环境保护的要求。

形体节能型结构

合理化的加工方式，新型的加工工艺，更大的提高桥架整体抗弯强度，在一定承载要求的情况下，可大大降低材料厚度，提高承载力，减小挠变值，节约原材料。

Strong carrying capacity

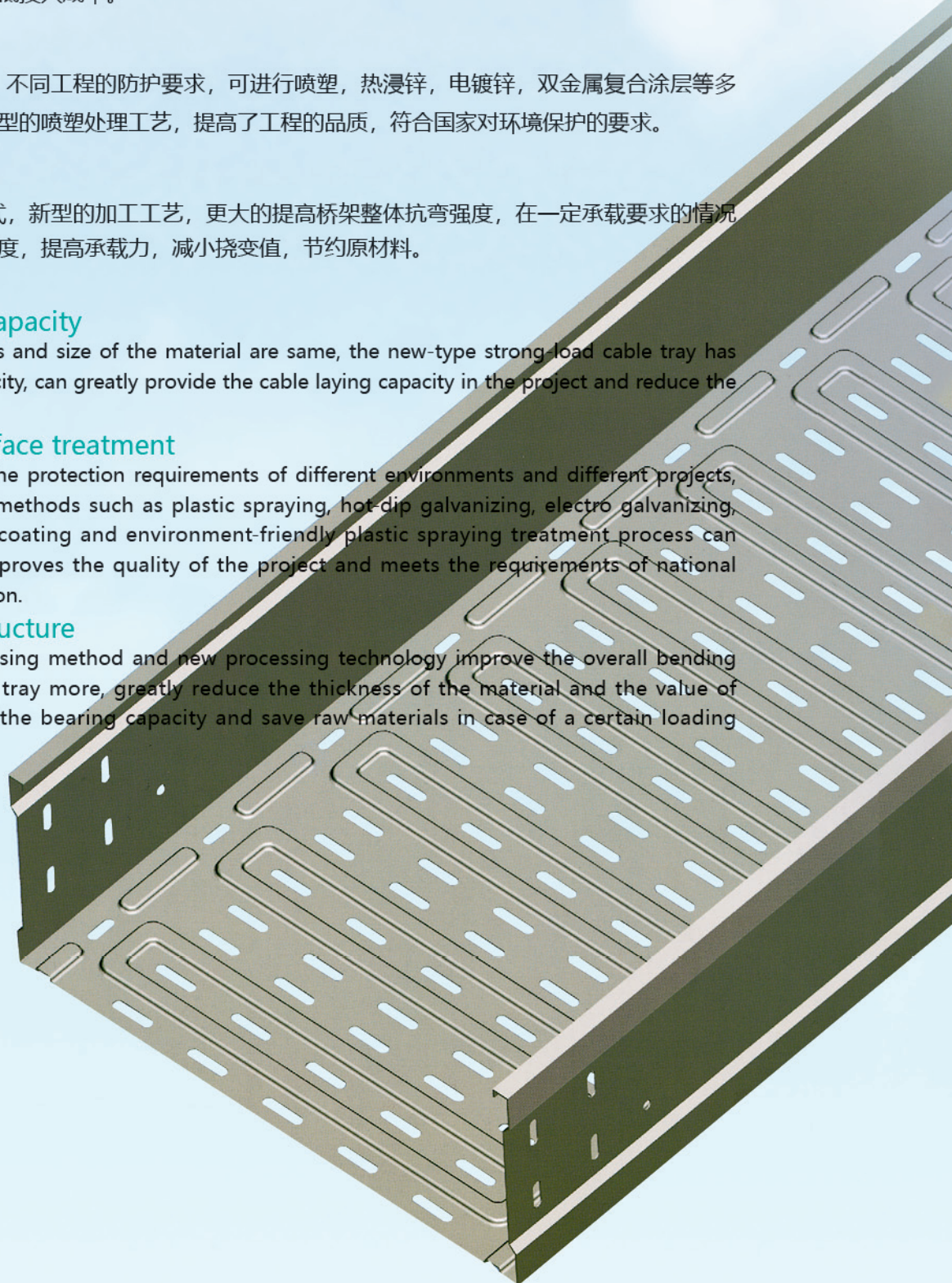
When the thickness and size of the material are same, the new-type strong-load cable tray has stronger carrying capacity, can greatly provide the cable laying capacity in the project and reduce the input cost.

High-quality surface treatment

In order to meet the protection requirements of different environments and different projects, diversified treatment methods such as plastic spraying, hot-dip galvanizing, electro galvanizing, bimetallic composite coating and environment-friendly plastic spraying treatment process can be adopted, which improves the quality of the project and meets the requirements of national environmental protection.

Energy-saving structure

Reasonable processing method and new processing technology improve the overall bending strength of the cable tray more, greatly reduce the thickness of the material and the value of disturbance, improve the bearing capacity and save raw materials in case of a certain loading requirement.



突出的节能节电效应

因敷设的电缆全面架空在槽内的环形筋上，使得电缆槽内通用，散热效果大幅增加，同时确保了通电运行的安全性能。

本品质桥架因散热性能好，通电使用的用户常年节约用电量3%。

快速的加工方式

采用PLC控制系统，实现自动化冲压成型加工方式，其成型速度达8米/分钟，缩短了加工时间，加快了工程进度。

广泛的应用范围

电缆桥架适用于电厂、企业、化工、写字楼、商场、停车场、码头、超市、地铁、隧道、学校等场所。

优化的安装效果

优化的断面结构，流线型的侧边筋饰，单内侧的连接方式，底部连续的环形凸槽，无论从侧面还是底部观看，感觉畅美，当桥架不再被封装时，起到了一种装饰性的效果。

Prominent energy and electricity-saving effect

The cable is laid on the annular bars in the tray, making the cable tray universal, greatly increasing the heat dissipation effect and ensuring the safety performance of electrified operation.

The good heat dissipation performance of the cable tray makes the annual electricity consumption save 3% for the users.

Rapid processing method

The adoption of PLC control system makes the automatic press forming method realized. The forming speed reaches 8 meters/min, which shortens the processing time and speeds up the project progress.

Wide range of applications

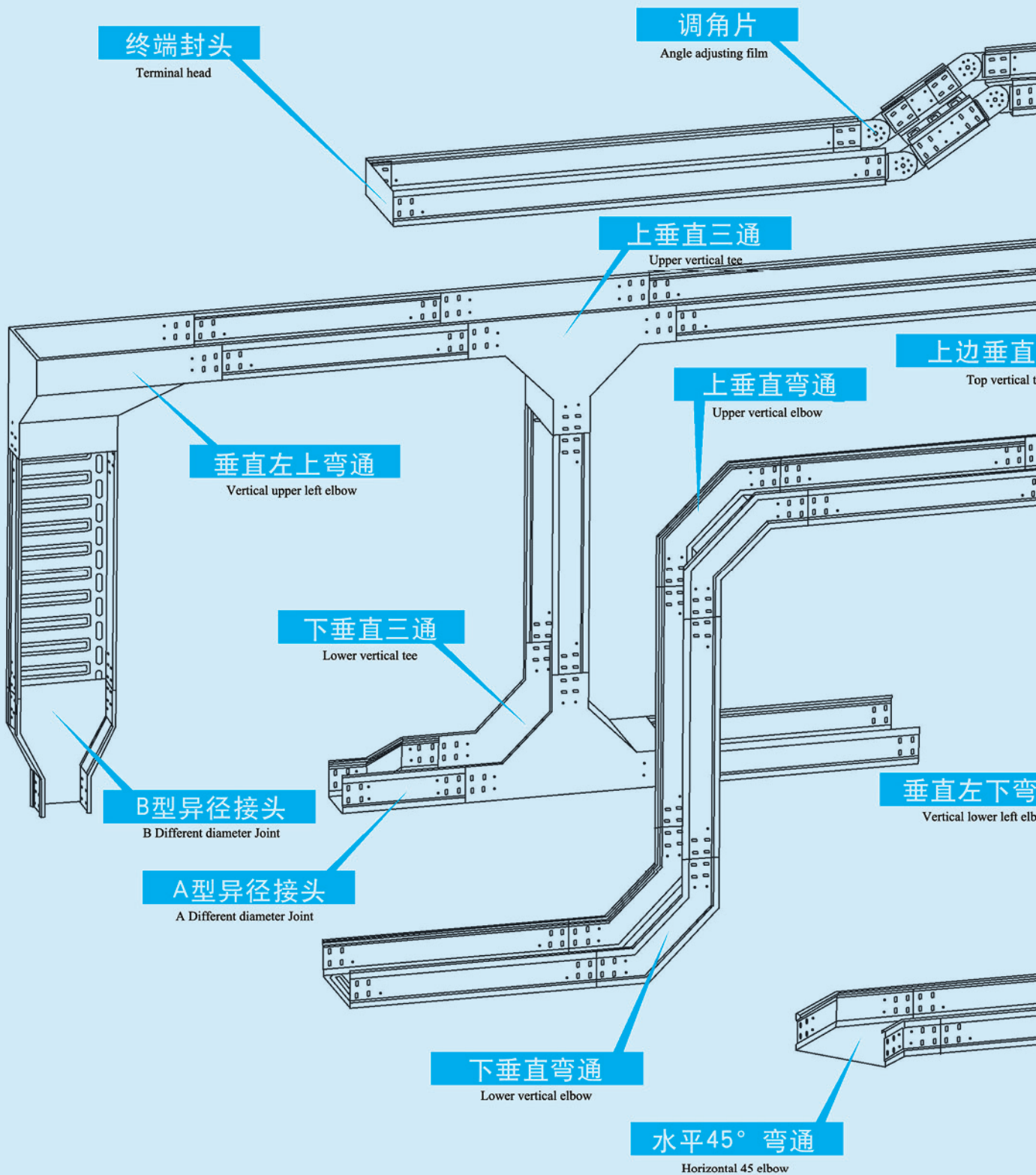
The cable tray is applicable to power plant, company, chemical plant, office building, parking area, wharf, supermarket, subway, tunnel, school and other places

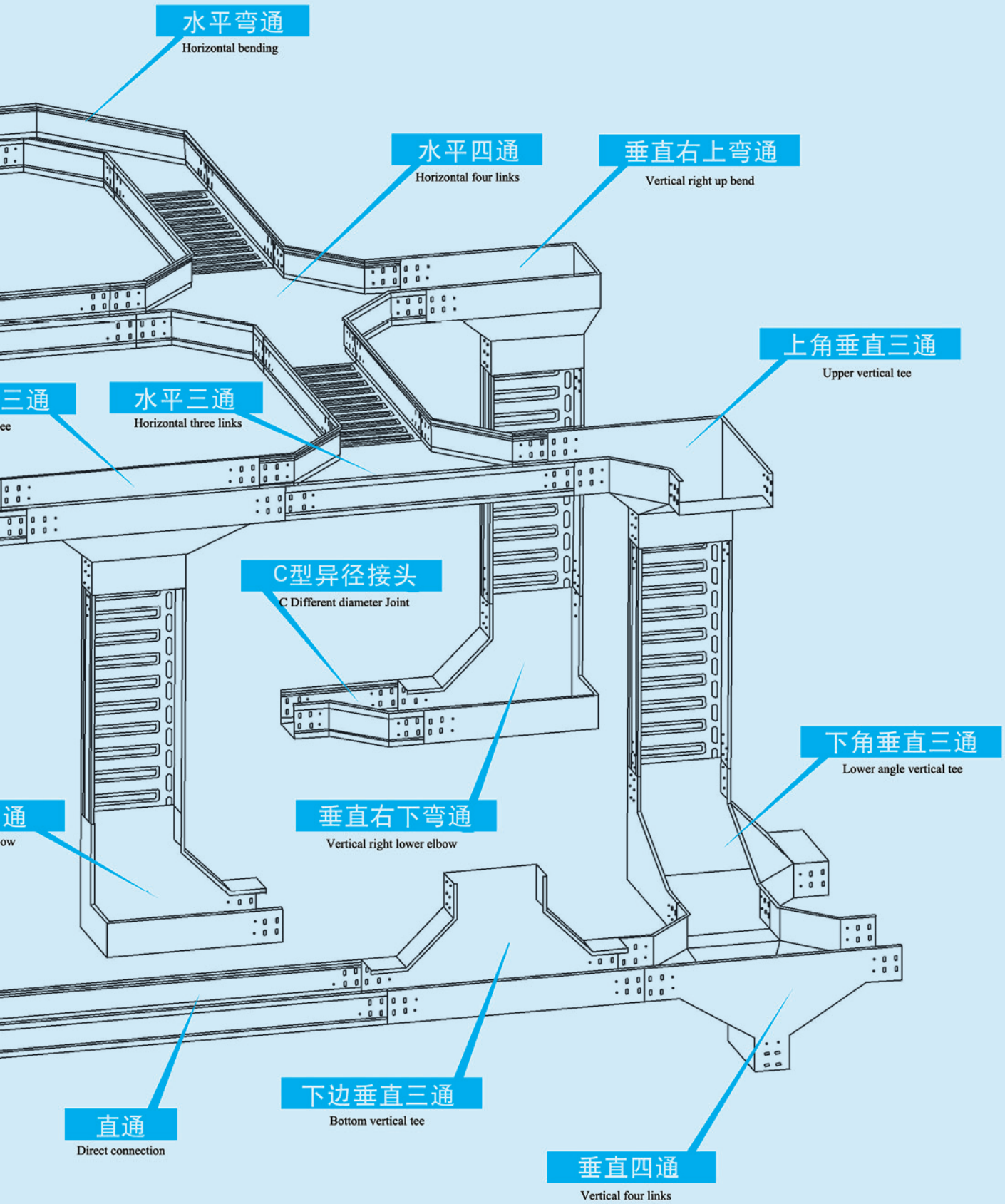
Optimized installation effect

The optimized cross section structure, streamlined side decoration, single inside connection way, continuous annular groove at the bottom make the cable tray nice and smooth no matter viewed from the side or the bottom .When the cable tray is no longer encapsulated, it plays a decorative effect.

■ 产品空间布置图

Space Layout of Product





产品目录

产品说明	06
Description of Product	
直通桥架系列	08
Straightway Cable Tray Series	
铝合金桥架系列	09
Aluminum Alloy Cable Tray Series	
盘槽式电缆桥架分支系列	11
Branch Series of Channel and Trough Cable Tray	
盘槽式电缆桥架分支系列外形尺寸对应表	13
Dimension Table of Branch Series of Channel and Trough Cable Tray	
梯式电缆桥架分支系列	14
Branch Series of Ladder-type Cable Tray	
连接附件	15
Connection Accessories	
安装附件	17
Installation Accessories	
电缆	19
Cable	
铝合金电缆桥架	23
Aluminum Alloy Cable Tray	
防火电缆桥架	43
Fireproof Cable Tray	

■ 产品说明 Description of Product

一、适用范围 Range of application

新型强载电缆桥架，适用于电压在10kV以下的电力电缆，控制电缆及照明配线等室内、外的架空敷设。

The new-type strong load cable tray is applicable to the indoor or outdoor overhead laying of power cables under 10kV, control cables and lighting wiring.

二、表示方法 Representing Method

1、型式及分类

- a、桥架按其结构形式分为：盘式、槽式、梯式；
- b、桥架按其连接分支不同分为：直通、弯通、三通、四通等。

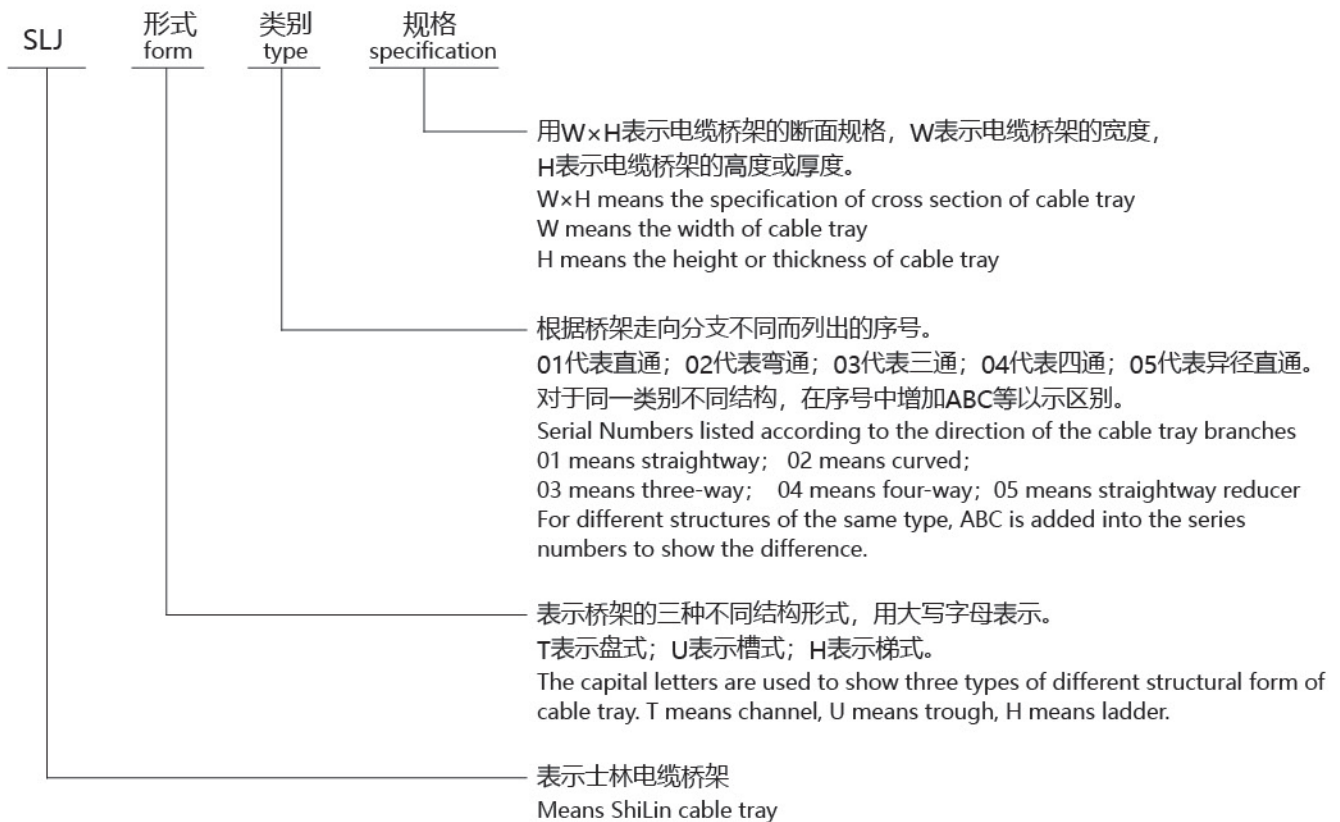
2、型号及含义

1、Type and Classification

a、According to its structural form, the cable tray is divided into channel one, trough one and ladder one.

b、According to the difference of connecting branch, the cable tray is divided into straightway, curved, three-way, four-way and so on.

2、Type and Meaning



三、产品选型

- 1、根据桥架适用环境及对电缆的散热、屏蔽要求，选择不同的结构形式；
- 2、电缆桥架上的电缆可无间距敷设，电缆在桥架内横断面的填充率：电力电缆应不大于40%，控制电缆应不大于50%；
- 3、所选桥架的承载能力，应能满足按规定敷设电缆的承载要求。
- 4、所选各种型式支吊架、应能承受电缆桥架相应规格、层数的额定均布荷载及其重；
- 5、对于特殊要求，应具有详细的技术说明。

Option of product type

- 1、Choose different structural form according to the applied environment of cable tray and the requirements of heat dissipation and shielding for the cables.
- 2、The cable on the cable tray can be laid without space. The cable filling rate of cross section in the cable tray is not more than 40% for the power cables and 50% for the control cables.
- 3、The carrying capacity of the selected cable tray should meet the load carrying requirement of specified laying cables.
- 4、All types of supports and hangers selected shall be able to bear the rated load and its weight of the corresponding specifications and layers of the cable tray;
- 5、For special requirement, please provide detail technical instructions.

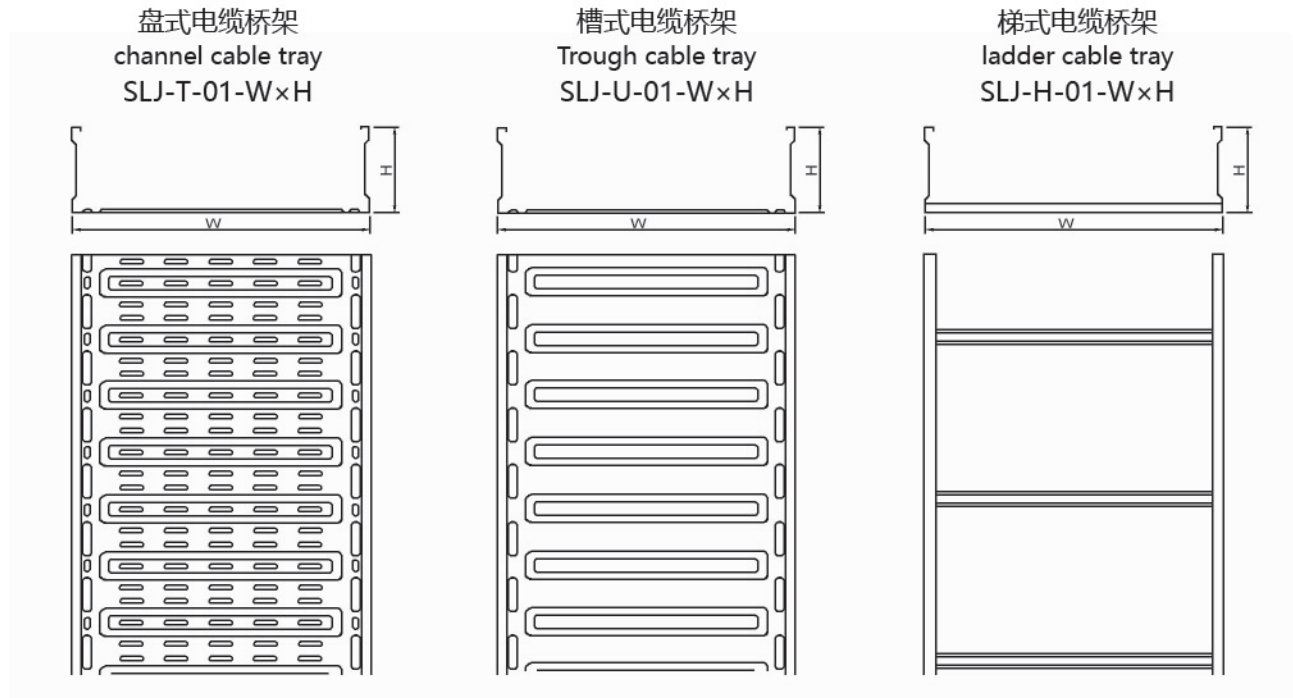
四、安装要求

- 1、电缆桥架的总平面布置应作到距离短,经济合理,运行安全,并满足施工安装、维修和敷设电缆的要求；
- 2、电缆敷设后，桥架的挠度应不大于电缆桥架跨度的1/200。当电缆桥架的跨度 ≥ 6 米时，其挠度应不大于电缆桥架跨度的1/150；
- 3、一般情况下，水平支撑电缆桥架的各托臂支架之间距离以1.5~3米左右为宜，垂直安装支架之间的距离以1~1.5米左右为宜；
- 4、桥架系统应具有可靠的电气连接并接地；
- 5、电缆桥架不得作为人行通道使用；
- 6、低压动力电缆与控制电缆共用同一托盘或梯架时，相互之间宜设置隔板。

Installation requirements

- 1、The general layout of the cable tray shall be short in distance, economical and reasonable, safe in operation, and shall meet the requirements of installation, maintenance and laying of cables;
- 2、The deflection of the cable tray shall not be greater than 1/200 of the span of the cable tray after the cable is laid. The deflection shall not be greater than 1/150 of the span of the cable tray when the span of the cable tray is 6 meters or more.
- 3、Generally, it is appropriate that the distance between brackets supporting the cable tray horizontally is about 1.5~3 meters and the distance between vertical mounting brackets is about 1~1.5 meters.
- 4、The cable tray system should have reliable electrical connection and ground connection.
- 5、The cable tray cannot be used as a pedestrian walkway.
- 6、When the low voltage power cable and control cable share the same tray or ladder, the partition plate should be used between them.

■ 直通桥架系列 Straightway cable tray series



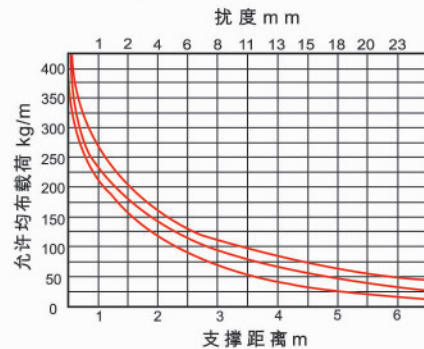
■ 电缆桥架参数

Parameters of cable tray

宽度	高度	SLJ-T-01-W×H		JSJ-U-01-W×H		SLJ-H-01-W×H	
W	H	料厚	重量kg/m	料厚	重量kg/m	料厚	重量kg/m
100	50	0.7	1.94	0.7	2.77	0.8	2.97
100	100	0.7	2.55	0.7	3.72	0.8	3.92
200	100	0.7	3.71	0.7	5.23	0.8	4.37
200	150	0.8	4.58	0.8	6.10	0.9	5.68
200	200	0.8	4.98	0.8	6.98	0.9	6.65
300	100	0.8	4.58	0.8	6.81	0.9	4.72
300	150	0.9	5.44	0.9	7.68	1.0	6.04
300	200	0.9	/	0.9	/	1.0	7.35
400	100	1.0	6.53	1.0	10.19	1.1	6.30
400	150	1.1	7.56	1.1	11.23	1.2	8.06
400	200	1.1	/	1.1	/	1.2	9.82
500	100	1.1	7.56	1.1	12.14	1.2	6.65
500	150	1.2	8.60	1.2	13.18	1.3	8.41
500	200	1.2	/	1.2	/	1.3	10.17
600	100	1.2	8.60	1.2	15.13	1.3	7.00
600	150	1.3	9.64	1.3	16.16	1.4	8.76
600	200	1.3	/	1.3	/	1.4	10.52
800	100	1.5	/	1.5	/	1.6	8.10
800	150	1.5	/	1.5	/	1.6	9.86
800	200	1.8	/	1.8	/	1.8	11.62
1000	100	1.8	/	1.8	/	1.8	8.90
1000	150	1.8	/	1.8	/	1.8	10.66
1000	200	1.8	/	1.8	/	2.0	12.42

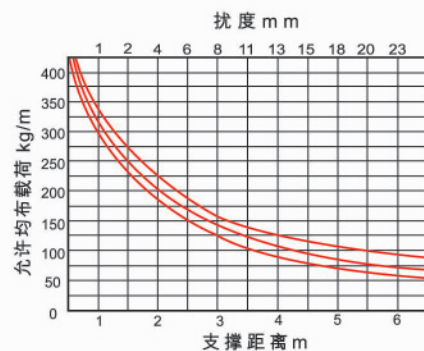
■ 盘槽式桥架均布载荷曲线图

Uniform loading curve chart of channel and trough cable tray



■ 梯式桥架均布载荷曲线图

Uniform loading curve chart of ladder cable tray



材质: Q235、Q195钢板或ST03z镀锌钢板。

特点: 盘式电缆桥架，重量轻，造型美观，具有较好的透气性，安装方便，适用于有一定散热要求的动力电缆敷设，如有需要，可配盖板。槽式电缆桥架，属封闭型桥架，配有盖板。安装方便，具有较好的屏蔽性和防水性，表面进行防火处理后具有防火性能，主要适用于信号，通讯，控制等有屏蔽要求的电缆敷设，梯式电缆桥架，结构简单，承载强度大，散热性好，加强型梯边，可满足较大跨距电缆的敷设，最适合电厂，地下电缆通道，码头，地铁等动力输电线路的敷设。

连接: 每节桥架标准长度为2000mm，桥架之间采用连接板进行连接，单内侧配置，根据需要，各节之间可通过接地线进行接地保护。

选型: 未注规格或项目要求，根据需要可特殊加工。

Material: Q235, Q195 steel plate or ST03z galvanized steel plate

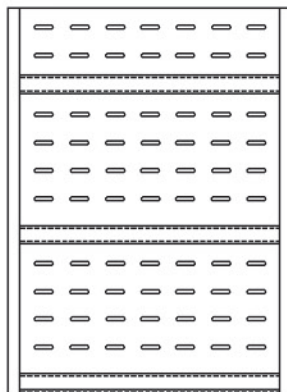
Characteristics: The channel cable tray is light in weight, nice in appearance and has good air permeability. It is very convenient to install and is suitable for laying power cables which have certain heat dissipation requirement. If needed, cover plate can be provided. The trough cable tray is enclosed and equipped with cover plate. It is very convenient to install and has good shielding property and waterproof performance. The surface is fireproof after conducting fireproof treatment. It is suitable for laying signal, communication and control cables with shielding requirements. With simple structure, strong load capacity, good heat dissipation and reinforced ladder side, the ladder cable tray can meet the laying of large span cables and is most suitable for laying of power transmission cables in the power plant, underground cable channel, wharf, subway and so on.

Connection: the standard length of each cable tray is 2000mm. With Single inside configuration, connection plates are used to connect cable trays. If needed, grounding protection can be conducted between each section by grounding wire.

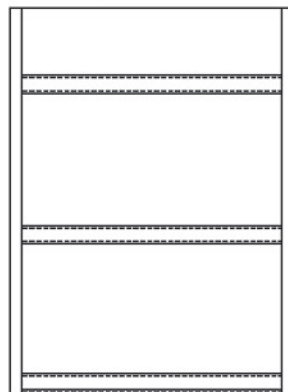
Option of type: Specifications or project requirements is not noted, we can customize according to the requirement.

■ 铝合金桥架系列 Aluminum Alloy Cable Tray Series

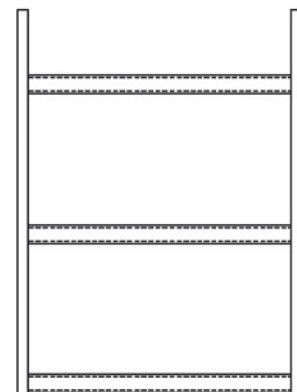
盘式电缆桥架
channel cable tray
SLJ-T-01-W×H



槽式电缆桥架
Trough cable tray
SLJ-U-01-W×H



梯式电缆桥架
ladder cable tray
SLJ-H-01-W×H



■ 铝合金电缆桥架参数 Parameters of aluminum alloy cable tray

宽度 W	高度 H	SLJ-T-01-W×H		SLJ-U-01-W×H		SLJ-H-01-W×H		盖 板	
		料厚	重量kg/m	料厚	重量kg/m	料厚	重量kg/m	料厚	重量kg/m
200	100	2.0	3.31	2.0	4.05	2.0	2.73	1	0.74
200	150	2.0	4.10	2.0	4.84	2.0	3.52		
300	100	2.0	3.88	2.0	5.15	2.0	3.01	1.2	1.27
300	150	2.0	4.67	2.0	5.94	2.0	3.79		
300	200	2.0	5.44	2.0	6.71	2.0	4.56	1.2	1.66
400	100	2.0	4.45	2.0	6.11	2.0	3.27		
400	150	2.0	5.24	2.0	6.90	2.0	4.06		
400	200	2.0	6.01	2.0	7.67	2.0	4.83	1.5	2.55
500	100	2.5	5.48	2.5	8.03	2.5	3.54		
500	150	2.5	6.27	2.5	8.82	2.5	4.33		
500	200	2.5	7.04	2.5	9.59	2.5	5.01	1.5	3.04
600	100	2.5	6.14	2.5	6.18	2.5	3.83		
600	150	2.5	6.93	2.5	9.97	2.5	4.60		
600	200	2.5	8.64	2.5	11.68	2.5	5.37		

材质: 6063, 5052铝合金。

特点: 铝合金电缆桥架，具有重量轻，造型美观，防腐性能优越，安装方便，不褪色等优点。主要适用于亚湿热地区拥护，亦可适用于防腐要求较高，气候条件恶劣或有特殊要求的环境。适合于化工，车间，超市，沿海地区电缆的敷设。

连接: 每节桥架标准长度为2000mm，桥架之间采用连接板进行连接，单内侧配置。建议连接时考虑冷热伸缩，连接缝比率为3/2000。槽式桥架含盖板。

载荷: 跨越在2米以下允许均布载荷150kg/m，相对挠度小于1/150。

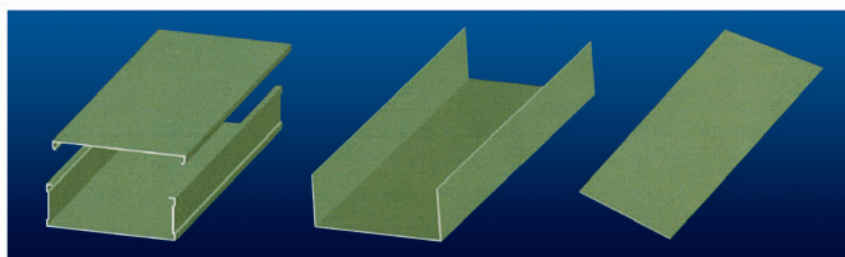
Material: 6063, 5052 aluminum alloy

Characteristics: The aluminum alloy cable tray has the advantages of light weight, nice appearance, superior anticorrosion performance, easy installation, color fastness and so on. It is mainly used in hot and humid area and also can be applicable to the environments with high requirement for anticorrosion, poor weather conditions or special requirement. It is suitable for laying of cables in the chemical plant, workshop, supermarket and coastal areas.

Connection: the standard length of each cable tray is 2000mm. With Single inside configuration, connecting plates are used to connect cable trays. It is suggested to consider the expansion of cold and heat when connecting, the ratio of connecting joints is 3/2000. The trough cable tray is equipped with cover plates.

Load: The allowed uniform load is 150 kg/m when the span is below 2 meters and the relative deflection is less than 1/150.

■ 阻燃防火系列 Flame Retardant and Fireproof Series



防火槽盒
fireproof box
SLJ-FHQ-W×H

防火内胆
fireproof channel
SLJ-FHD-W×H

防火隔板
fireproof partition plate
SLJ-FHD-W×H

材质: 有机或无机玻璃钢。

性能: 防火槽盒，具有很好的耐火及阻燃性，并耐强酸，强碱，盐腐蚀。

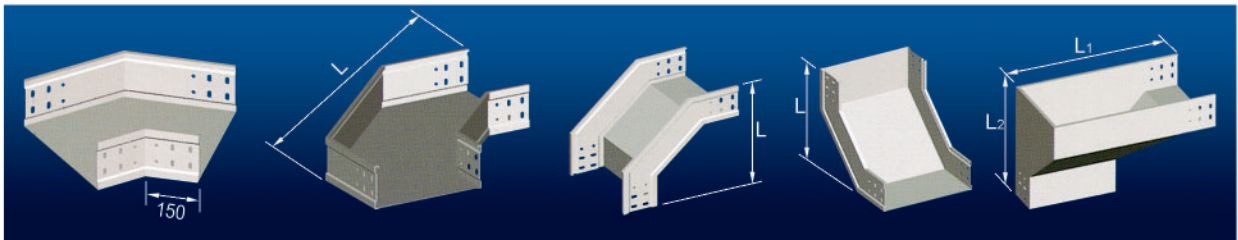
适用范围: 电厂，超市，商场等有防火要求的区域防火槽盒可单独使用。

Material: organic or inorganic GRP

Property: the fireproof box has better fireproof and flame retardant performance and is resistant to strong acid, strong alkali and salt corrosion.

Range of application: the area with fireproof requirements such as power plant, supermarket, shopping mall. The fireproof box can be used separately.

盘槽式电缆桥架分支系列 Branch Series of Channel and Trough Cable Tray



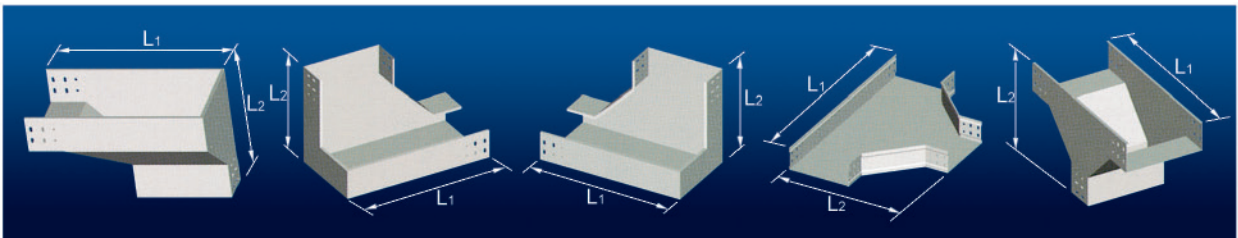
SLJ-U-02A-W×H
45度水平弯通
45 degree horizontal elbow

SLJ-U-02B-W×H
90度水平弯通
90 degree horizontal elbow

SLJ-U-02C-W×H
垂直上弯通
vertical upwards elbow

SLJ-U-02D-W×H
垂直下弯通
vertical downwards elbow

SLJ-U-02E-W×H
垂直左上弯通
vertical left-upwards elbow



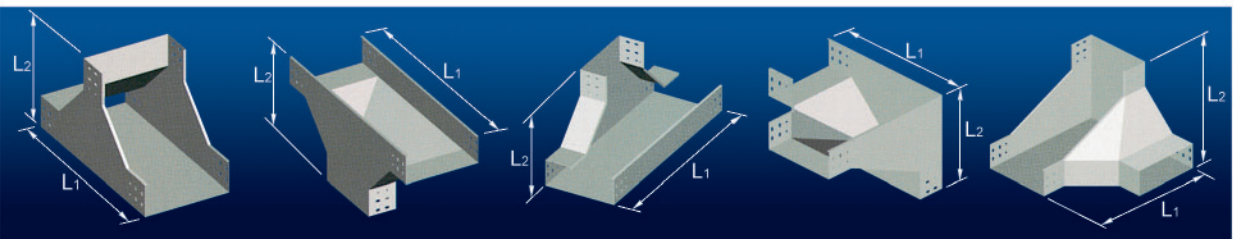
SLJ-U-02F-W×H
垂直右上弯通
vertical right-upwards elbow

SLJ-U-02G-W×H
垂直左下弯通
vertical left-downwards elbow

SLJ-U-02H-W×H
垂直右下弯通
vertical right-downwards elbow

SLJ-U-03A-W×H
水平三通
horizontal tee

SLJ-U-03B-W×H
上垂直三通
upwards vertical elbow



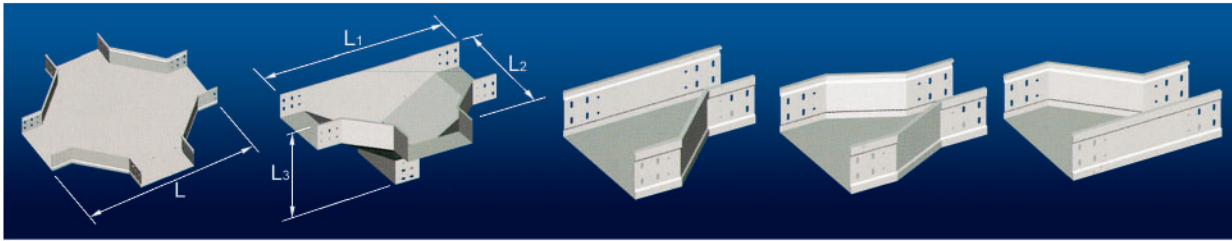
SLJ-U-03C-W×H
下垂垂直三通
downwards vertical elbow

SLJ-U-03D-W×H
上边垂直三通
upside vertical elbow

SLJ-U-03E-W×H
下边垂直三通
downside vertical elbow

SLJ-U-03F-W×H
上角垂直三通
up-corner vertical elbow

SLJ-U-03G-W×H
下角垂直三通
down-corner vertical elbow



SLJ-U-04A-W×H

水平四通

horizontal cross

SLJ-U-04B-W×H

垂直四通

vertical cross

SLJ-U-05A-W×H

异径接头A型

reducer type A

SLJ-U-05B-W×H

异径接头B型

reducer type B

SLJ-U-05C-W×H

异径接头C型

reducer type C

- 盘槽式分支桥架，是当盘式或槽式电缆桥架在水平或垂直空间由一个方向向其它不同方位延伸或分支时，所必须的桥架构件。与电缆桥架直通配合，满足电缆在工程中敷设方向的变动。
- 盘式或槽式电缆桥架所配套的分支桥架相同。
- 盘式或槽式分支桥架根据引出口数量分为二向分支(弯通类02)，三向分支(三通类03)，四向分支(四通04)及直向规格变化(异径接头05)。
- 在组装时，各类分支桥架分别需要2,3,4,2件连接板。当桥架高度H为100mm时，每套连接板配M8×16方径螺栓4套，当桥架高度H为150或200mm时，每套连接板配M8×16方径螺栓8套。
- 当桥架系统需要另加接地装置时，每个分支配接地线1套。

根据需要可配置盖板。

各分支桥架具体外形尺寸详见《盘、槽式电缆桥架分支系列外形尺寸对应表》。

具体安装方式及安装示意位置参考桥架安装示意图。

Channel and trough branch cable tray is the necessary component of cable tray when the channel or trough cable tray extends or branches from one direction to other different directions in the horizontal or vertical space. Matching with the straightway connector of cable tray is to meet the change of laying direction in the project.

The matched branch cable tray of the channel and trough cable tray is same.

According to the quantity of outlet, the channel or trough branch cable tray can be divided into two-direction branch (elbow 02), three-direction branch (tee 03), four-direction branch (cross 04) and straight-direction specification change (reducer 05).

During assembly, 2pcs, 3pcs, 4pcs and 2pcs of connection plates are needed respectively for all kinds of branch cable tray. 4 sets of M8×16 square neck bolts are provided for each set of connection plate when the height (H) of cable tray is 100mm and 8 sets of M8×16 square neck bolts are provided for each set of connection plate when the height (H) of cable tray is 150 or 200mm.

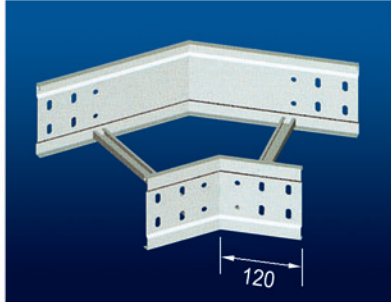
When the cable tray system is required to install additional grounding device, one grounding wire is provided for each branch. Cover plate can be provided as required. For the specific dimensions of each branch cable tray, please refer to the corresponding dimension table of branch series of channel and trough cable tray. For the specific installation way and position, please refer to the installation schematic diagram of cable tray

■ 盘、槽式电缆桥架分支系列外形尺寸对应表

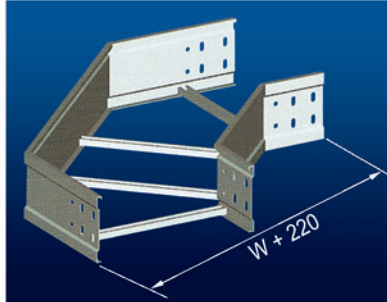
Dimension Table of Branch Series of Channel and Trough Cable Tray

规格 外形尺寸 名称	宽度 W 高度 H	100		200				300			400			500			600		
		50	100	60	100	150	200	100	150	200	100	150	200	100	150	200	100	150	200
90°水平弯通 SLJ-U-02B	L	270	270	400	420	420	420	520	520	520	620	620	620	720	720	720	820	820	820
垂直上弯通 SLJ-U-02B	L	220	270	290	320	370	420	320	370	420	320	370	420	320	370	420	320	370	420
垂直下弯通 SLJ-U-02B	L	220	270	290	320	370	420	320	370	420	320	370	420	320	370	420	320	370	420
垂直左上弯通 SLJ-U-02B	L1	270	270	500	420	420	420	520	520	520	620	620	620	720	720	720	820	820	820
	L2	220	220	360	320	370	420	320	370	420	320	370	420	320	370	420	320	370	420
垂直右上弯通 SLJ-U-02B	L1	270	270	500	420	420	420	520	520	520	620	620	620	720	720	720	820	820	950
	L2	220	220	360	320	370	420	320	370	420	320	370	420	320	370	420	320	370	500
垂直左下弯通 SLJ-U-02B	L1	270	270	500	420	420	420	520	520	520	620	620	620	720	720	720	820	820	950
	L2	220	220	360	320	370	420	320	370	420	320	370	420	320	370	420	320	370	500
垂直右下弯通 SLJ-U-02B	L1	270	270	500	420	420	420	520	520	520	620	620	620	720	720	720	820	820	950
	L2	220	220	360	320	370	420	320	370	420	320	370	420	320	370	420	320	370	500
水平三通 SLJ-U-03A	L1	440	440	600	640	640	640	740	740	740	840	840	840	940	940	940	1040	1040	1040
	L2	270	270	400	420	420	420	520	520	520	620	620	620	720	720	720	820	820	820
上垂直三通 SLJ-U-03B	L1	390	440	520	540	590	640	540	590	640	540	590	640	540	590	640	540	590	640
	L2	220	270	290	320	370	420	320	370	420	320	370	420	320	370	420	320	370	420
下垂直三通 SLJ-U-03C	L1	390	440	520	540	590	640	540	590	640	540	590	640	540	590	640	540	590	850
	L2	220	270	290	320	370	420	320	370	420	320	370	420	320	370	420	320	370	500
上边垂直三通 SLJ-U-03D	L1	440	440	800	640	640	640	740	740	740	840	840	840	940	940	940	1040	1040	1040
	L2	220	270	360	320	370	420	320	370	420	320	370	420	320	370	420	320	370	420
下边垂直三通 SLJ-U-03E	L1	440	440	800	640	640	640	740	740	740	840	840	840	940	940	940	140	1040	1300
	L2	220	270	360	320	370	420	320	370	420	320	370	420	320	370	420	320	370	500
上角垂直三通 SLJ-U-03F	L1	350	400	500	500	500	500	600	600	600	700	700	700	850	850	850	950	950	950
	L2	300	310	360	400	450	380	400	450	360	400	450	360	450	500	500	450	500	500
下角垂直三通 SLJ-U-03G	L1	350	400	500	500	500	500	600	600	600	700	700	700	850	850	850	950	950	950
	L2	300	310	360	400	450	380	400	450	360	400	450	360	450	500	500	450	500	500
水平四通 SLJ-U-04A	L	440	440	600	640	640	640	740	740	740	840	840	840	940	940	940	1040	1040	1040
垂直四通 SLJ-U-04B	L1	440	440	800	640	640	640	740	740	740	840	840	840	940	940	940	1040	1040	1040
	L2	270	270	500	420	420	420	520	520	520	620	620	620	720	720	720	820	820	820
	L3	220	270	360	320	370	420	320	370	420	320	370	420	320	370	420	320	370	420

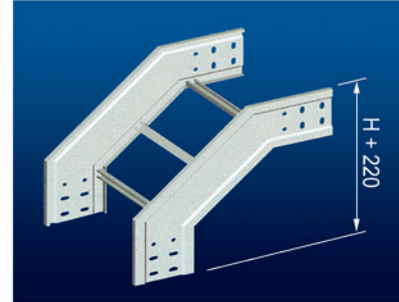
■ 梯式电缆桥架分支系列 Branch Series of Ladder Cable Tray



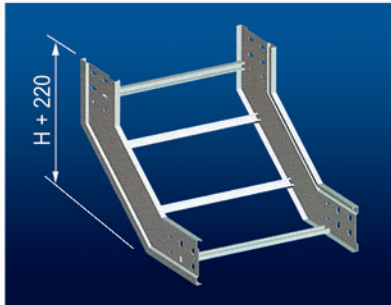
SLJ-H-02A-W×H
梯式45度水平弯通
ladder-type 45 degree horizontal elbow



SLJ-H-02B-W×H
梯式90度水平弯通
ladder-type 90 degree horizontal elbow



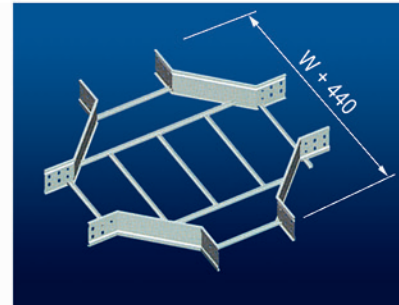
SLJ-H-02C-W×H
梯式垂直上弯通
ladder-type vertical upwards elbow



SLJ-H-02D-W×H
梯式垂直下弯通
ladder-type vertical downwards elbow



SLJ-H-04-W×H
梯式水平三通
ladder-type horizontal tee



SLJ-H-04-W×H
梯式水平四通
ladder-type horizontal cross

- 梯式分支桥架，是当梯式电缆桥架在水平或垂直空间由一个方向向其它不同方位延伸或分支时，所必需的桥架构件。与电缆桥架直通配合，满足电缆在工程中敷设方向的变动。
- 梯式分支桥架根据引出口数量分为二向分支(弯通类02)，三向分支(三通类03)，四向分支(四通04)。在组装时，各类分支桥架分别需要2, 3, 4件连接板。当桥架高度H为100mm时，每套连接板配M8×16方径螺栓4套，当桥架高度H为150或200mm时，每套连接板配M8×16方径螺栓8套。
- 当桥架系统需要另加接地装置时，每个分支配接地线1套。
- 根据需要可配置盖板。

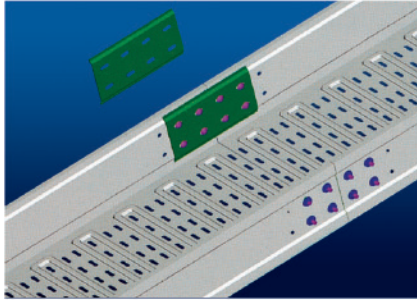
Ladder cable tray is the necessary component of cable tray when the ladder cable tray extends or branches from one direction to other different directions in the horizontal or vertical space. Matching with the straightway connector of cable tray is to meet the change of laying direction in the project.

According to the quantity of outlet, the ladder cable tray can be divided into two-direction branch (elbow 02), three-direction branch (tee 03), four-direction branch (cross 04). During assembly, 2pcs, 3pcs, 4pcs and 2pcs of connection plates are needed respectively for all kinds of branch cable tray. 4 sets of M8×16 square neck bolts are provided for each set of connection plate when the height (H) of cable tray is 100mm and 8 sets of M8×16 square neck bolts are provided for each set of connection plate when the height (H) of cable tray is 150 or 200mm.

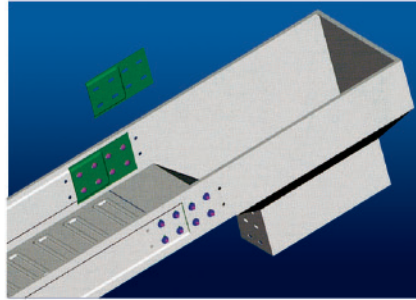
When the cable tray system is required to install additional grounding device, one grounding wire is provided for each branch.

Cover plate can be provided as required.

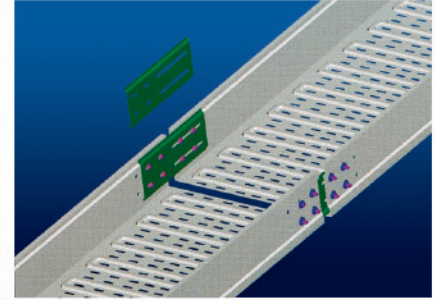
■ 连接附件 Connection Accessories



SLJ-LF-01-H
连接板 I 型
vertical left-upwards elbow



SLJ-LF-02-H
连接板 II 型
vertical left-upwards elbow



SLJ-LF-03
连接板 III 型(伸缩连接板)
vertical left-upwards elbow

- 连接附件主要用于桥架之间的连接。
- 连接板 I 型主要用于断面结构与直通完全一致的对接部位连接；
- 连接板 II 型主要用于对应断面结构不一致对接部位的连接；
- 连接板 III 型，又称为伸缩连接板，用于直线方向有一定可节量要求的对接部位连接。

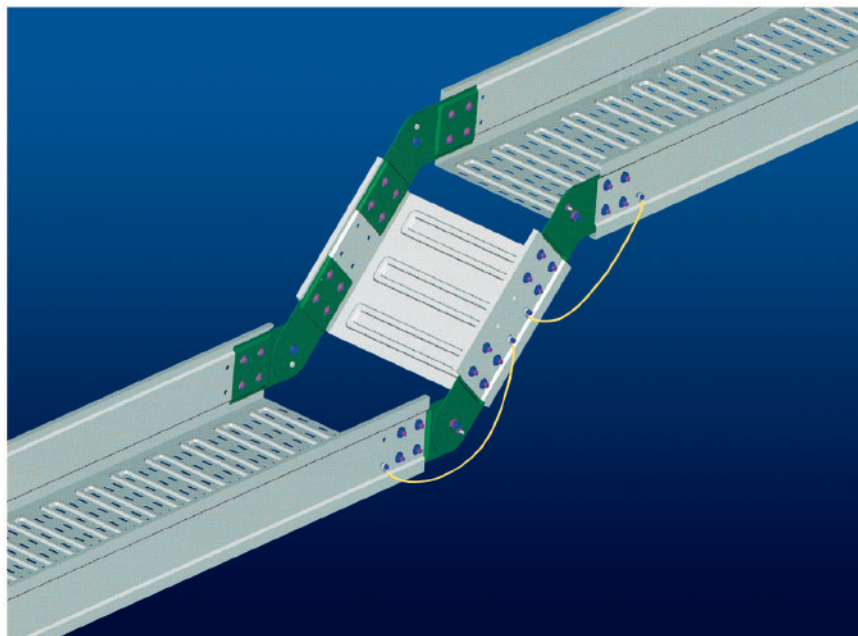
The connection accessories are mainly used to connect cable trays

Connection plate type I is mainly used to connect the butt position where the cross section structure is exactly same with the straight connector.

Connection plate type II is mainly used to connect the butt position where the corresponding section structure is not same.

Connection plate type III , also named as expansion plate is used to connect the butt position where has certain adjustment requirement at the linear direction.

■ 连接附件 Connection Accessories

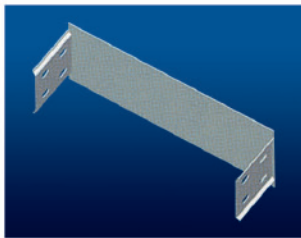


调角片

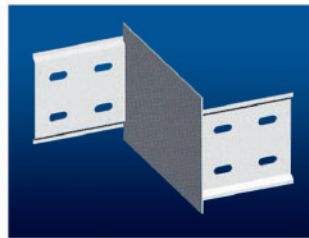
Angle adjusting unit
SLJ-LF-04-H

主要用于桥架在安装过程中因避让障碍物而上下调整标高，每调节一个角度需要4件调角片，配M10×15及M6×15六角螺栓各2套，当配合桥架为盘，槽式时，采用M6×12方径螺栓8或16套，当配合桥架为梯式时，采用M8×16方径螺栓8或16套。

It is mainly used to adjust the elevation up and down to avoid obstacles during installation of cable tray. 4 pieces of angle adjusting unit are needed for adjusting one angle. 2 sets of M10×15 and M6×15 hex bolts are provided. 8 sets or 16 sets of M6×12 square neck bolts are used when the matched cable tray is channel or trough one and 8 sets or 16 sets of M8×16 square neck bolts are used when the matched cable tray is ladder one.



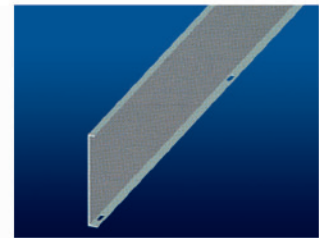
SLJ-LF-05-W×H
终端封头
terminal head



SLJ-LF-06-W×H
调宽片
width adjusting unit



SLJ-LF-07-W×H
角连接片
angle connection unit



SLJ-LF-08-W×H
隔板
partition plate

- 终端封头：用于桥架系统未断，表示电缆到此不再延伸。型号中W×H表示所配合桥架的规格。
- 调宽片：用于不同宽度桥架之间简易对接。型号中，W表示所调节的宽度，H表示配合桥架的高度。
- 角连接片：用于现场桥架对接角度任意情况下，桥架之间的连接。
- 隔板：用于桥架内部空间的分隔，以满足同一桥架内不同电缆的分类或隔离。

The terminal head is used for the case that the cable tray system is not broken, indicating that the cable is no more extended. W×H in the type description represents the specification of matched cable tray.

The width adjusting unit is used for simple butt connection of cable tray of different width. W means adjustable width; H means the height of matched cable tray.

The angle connection unit is used for connection between cable trays at any connection angle onsite.

The partition plate is used to separate the inside space of cable tray to meet the classification or isolation of different cables in the same tray.

■ 盖板及锁扣

- 盖板用于桥架的防水，防尘；
- 锁扣用于桥架盖板与桥架之间的紧固，高强度，高耐腐蚀性材料更有利于适用各类环境；
- 盖板标准长度为2000mm；
- 每件盖板需要锁扣4件；
- 盖板料厚及重量表如下。

Cover plate and lock

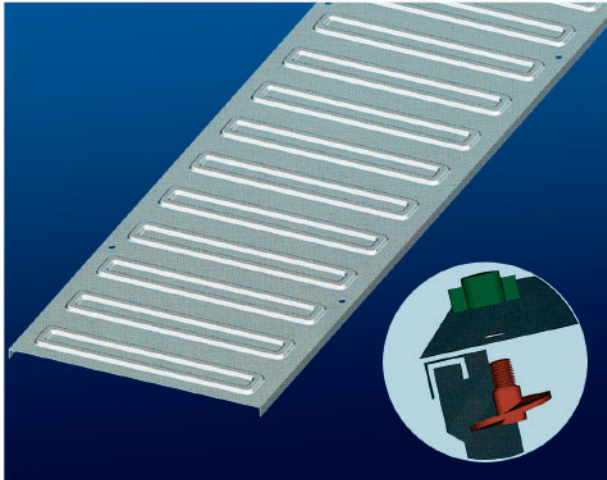
The cover plate is used to prevent water and dust

The lock is used to fasten the cover and the cable tray. The material of high-strength and high corrosion resistance is more suitable for all kinds of environment.

The standard length of cover plate is 2000mm.

Each cover plate needs 4 locks.

The thickness and weight of the cover plate is described in the following table.



桥架宽度W	料厚	单重(kg/m)
100	0.8	0.83
150	0.8	1.17
200	0.8	1.52
300	0.8	2.24
400	1.0	3.66
500	1.0	4.58
600	1.2	6.53
800	1.2	8.60
1000	1.5	13.34

■ 安装附件 Installation Accessories

■ 双杆吊架 Hanger with double rods



分类: 根据吊杆不同, 可分为圆钢双杆吊架和角钢双杆吊架两种。

选型: 当所支撑桥架规格 $W \leq 400$ 宽时, 亦选用圆钢双杆吊架, 当支撑桥架规格 $W > 400$ 时, 亦选用角钢双杆吊架, 架吊长度可根据实际需要, 核定使用长度。

安装: 双杆吊架, 采用M12*110膨胀螺栓固定在上方固定体, 亦可采用焊接。角钢双杆吊架, 其横向支撑角钢通过M8*20六角螺栓与吊杆连接。

Classification: According to the difference of hanger rod, the hanger with double rods can be divided into two kinds: round steel one and angle steel one.

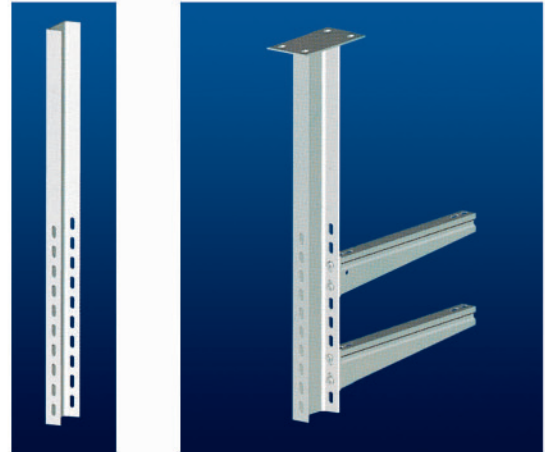
Option of type: Please use round steel hanger with double rods when the width of cable tray is less than or equal to 400mm and use angle steel hanger with double rods when the width of cable tray is more than 400mm. The length of hanger rod can be customized according to the actual requirement.

Installation: fix the hanger with double rods on the upper fixed part with M12*110 expansion bolts or by welding. For the angle steel hanger with double rods, the horizontal supporting angle bar is connected with the hanger with M8*20 hexagon bolts.

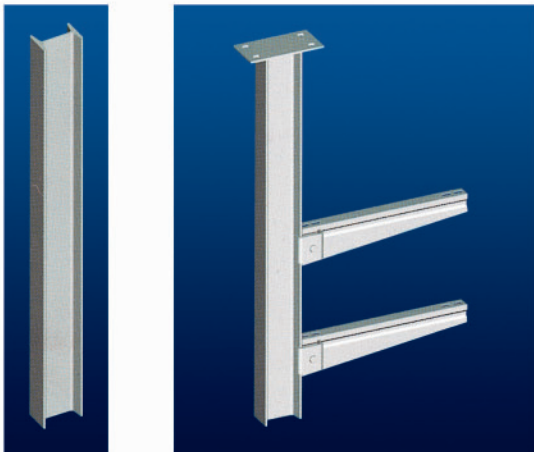
■ 单柱吊架 Single-column hanger



SLJ-H-02A SLJ-H-02B JNQJ-H-02-W
角钢单柱吊架
angle steel single-column hanger



SLJ-H-03A SLJ-H-03B SLJ-TB-02-W
槽钢单柱吊架
channel steel single-column hanger



SLJ-H-04A SLJ-TB-03-W
工字钢单柱吊架
I steel single-column hanger

分类: 根据吊柱不同, 可分为角钢单柱吊架, 槽钢单柱吊架和工字钢单柱吊架三种。

造型: 当所支撑桥架规格 $W \leq 300$ 宽时, 亦选用角钢单柱吊架, 当支撑桥架规格 $W > 400$ 或吊柱长度 > 1 米时, 亦选用槽钢或工字钢单柱吊架。吊杆长度可根据实际需要, 核定使用长度。

安装: 单柱吊架, 采用M12*110膨胀螺栓固定在上方固定体, 亦可采用焊接。根据不同的吊柱, 选用不同的托臂, 对于槽钢、工字钢单柱吊架, 可进行多层安装。

Classification: According to the difference of hanger column, single-column hanger can be divided into three kinds: round steel one, angle steel one and I steel one.

Option of type: Please use angle steel single-column hanger when the width of its supporting cable tray is less than or equal to 300mm and use channel steel single-column hanger or I steel single-column hanger when the width of cable tray is more than 400mm or the length of column is more than 1m. The length of hanger column can be customized according to the actual requirement.

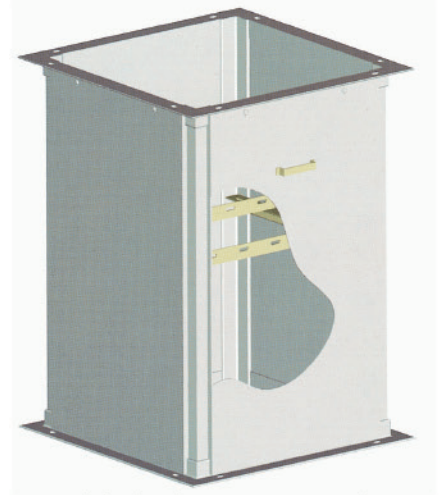
Installation: fix the single-column hanger on the upper fixed part with M12*110 expansion bolts or by welding. Different bracket is used according to the difference of hanger column. The channel steel and I steel single-column hanger can be installed in many layers.

■ 电缆竖井 Cable shaft

电缆竖井，主要适用于电缆数量较多，且上下落差较大，周边无合适固定支撑体的电缆垂直方向敷设。SLJ型竖井，采用框架结构，四面可开启，方便电缆敷设及检修，外形美观内部配有电缆固定支架，可任意放置，满足工程需要。

电缆竖井采用法兰盘连接，可满足多层组合，主要用于电厂或电缆密集部位电缆的垂直敷设。

根据适用环境及电缆分支情况，在一定高度需要配有分支接头，本公司竖井接头根据分支数量，可分为单向分支，一字双向分支，T型双向分支，三向分支。



The cable shaft is mainly used for laying cables in a vertical direction with a large number of cables, a large drop difference between up and down, and no suitable fixed support around. With frame structure and nice appearance, SLJ-type shaft can be opened in all sides, is convenient for cable laying and maintenance and cable fixed bracket is equipped inside, can be placed arbitrarily to meet the needs of project.

The cable shafts are connected with flange plates, which can satisfy the multi-layer combination and mainly used for laying cable vertically in the power plant or the area with dense cables.

According to the applicable environment and cable branch, branch joints are required at a certain height. According to the quantity of branches, the shaft joint of our company can be divided into one-way branch, —-type two-way branch, t-type two-way branch and three-way branch.

■ 型号表示 Meaning of Type



SLJ: 表示士林桥架系列。

SJ: 表示为电缆竖井。

形式: 表示竖井的结构形式，K0表示为直节竖井，无分支；K1表示为有一面有分支开口，K2a表示一字双向分支，K2b表示T型双向分支，K3表示三向分支；GB表示竖井封口盖板。

A×B: 表示竖井的规格，A表示竖井正面宽度，B表示竖井侧面的宽度。

W1×H1/W2×H2/W3×H3: 表示竖井分支开口所对应桥架的规格，按顺时针方向—列出。如无分支可不列举。

正面宽度A	侧面宽度B	单重(kg/m)
300	300	56.2
400	400	69.7
500	500	85.4
600	600	97.5
800	800	124.5
1000	1000	142.7
600	400	85.4
800	600	112.5
1000	800	137.5

SLJ means Shilin cable tray series

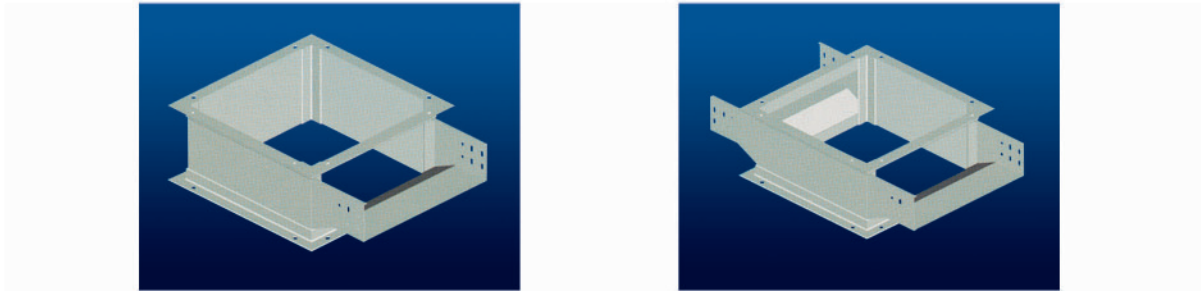
SJ means cable shaft

Form means the structural form of shaft, K0 means straight shaft without branch; K1 means one side with branch opening, K2a means —-type two-way branch, K2b means T-type two-way branch, K3 means three-way branch. GB means cover plate of shaft.

A×B represents the specification of the shaft, A represents the width of the front side of the shaft. B represents the width of lateral side of the shaft.

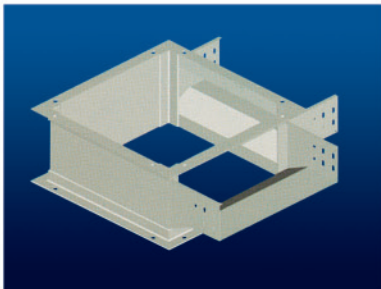
W1×H1/W2×H2/W3×H3 means the specifications of cable corresponding to the shaft branch opening and list one by one in the clockwise direction. No need to list the specifications if no branch

■ 各种分支竖井结构示意图 Structure diagram of various branch shafts

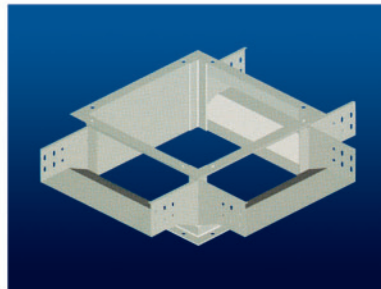


SLJ-SJ-K1-A×B-W1×H1
单开口竖井接头
shaft joint of single opening

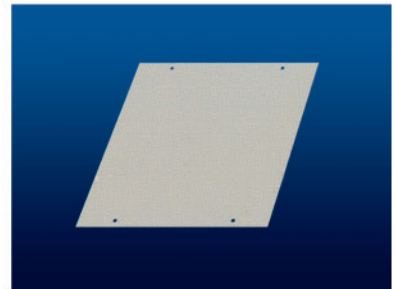
SLJ-SJ-K2a-A×B-W1×H1/W2×H2
一字双开口竖井接头
shaft joint of —type double openings



SLJ-SJ-K2b-A×B-W1×H1/W2×H2
T型双开口竖井接头
shaft joint of T-type double openings



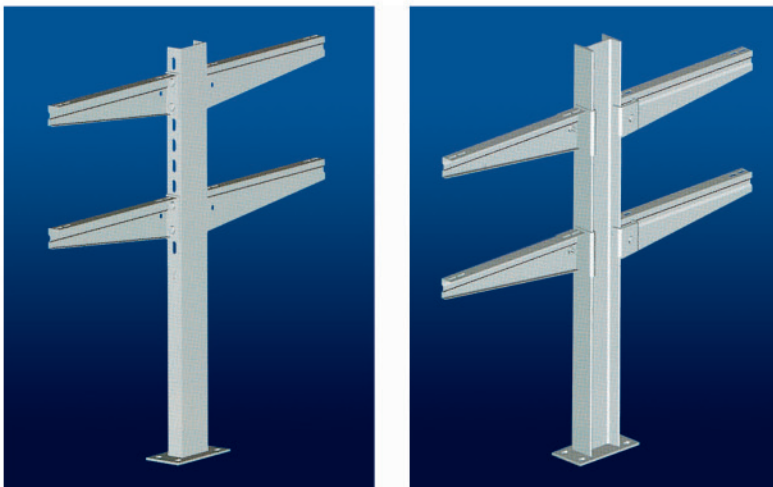
SLJ-SJ-K3-A×B-W2×H2/W3×H3
三开口竖井接头
shaft joint of three openings



SLJ-SJ-GB-A×B
竖井封盖板
cover plate of shaft

■ 安装附件 Installation of Accessories

■ 支撑安装 Installation of bracket

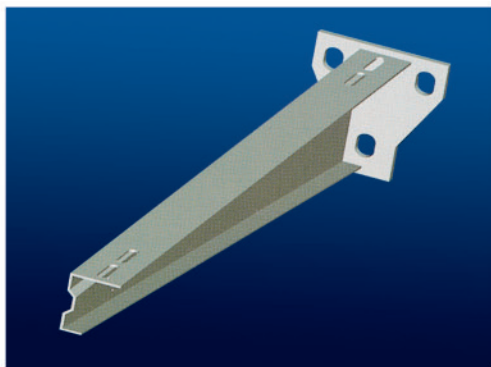
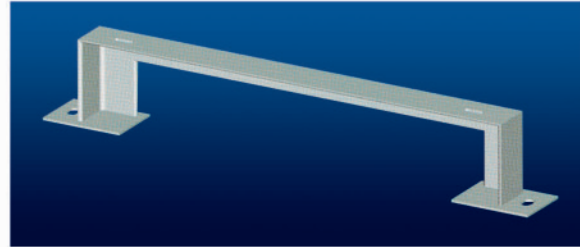
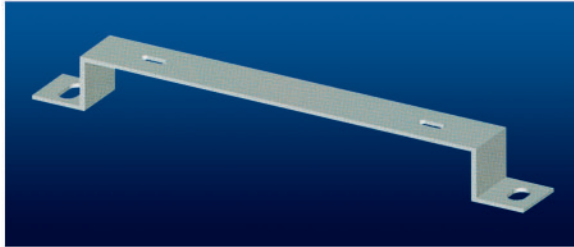


- 当桥架离地面距离较小时，可从地面进行支撑安装，根据所用支柱不同，可分为槽钢支柱和工字钢支柱。
- 进行支撑安装，可将支柱底板通过M12*110膨胀螺栓固定在地面或底部固定体，亦可采用焊接，根据支柱不同，可配套相应托臂。

When the distance between the cable tray and the ground is short, the bracket can be installed on the ground. The bracket can be divided into channel steel column and I-steel column according to the difference of columns

For bracket installation, the base plate of the column can be fixed on the ground or the bottom fixed body with M12*110 expansion bolts, or by welding. The corresponding bracket can be installed according to the difference of columns.

■ 临墙安装托臂 Wall-mounted bracket



SLJ-TB-01-W
临墙水平托臂
Wall-mounted bracket

分类: 临墙安装托臂分为临墙竖向托臂和临墙水平托臂。

选型: 当桥架临墙水平安装时, 采用临墙水平托臂, 当桥架临墙竖向安装时, 采用临墙竖向托臂。竖向安装, 当配合桥架宽度 $W \leq 400$ 时, 选用A型(板折型), 当配合桥架宽度 $W > 400$ 时或桥架离墙体超过100时, 亦选用B型(角钢型)。

安装: 临墙水平托臂, 可先将托臂通过M12*10膨胀螺栓固定在墙体上, 然后再放置桥架, 对于竖向托臂, 可先将桥架固定在托臂上, 然后通过M12*10膨胀螺栓将其固定在墙体上。

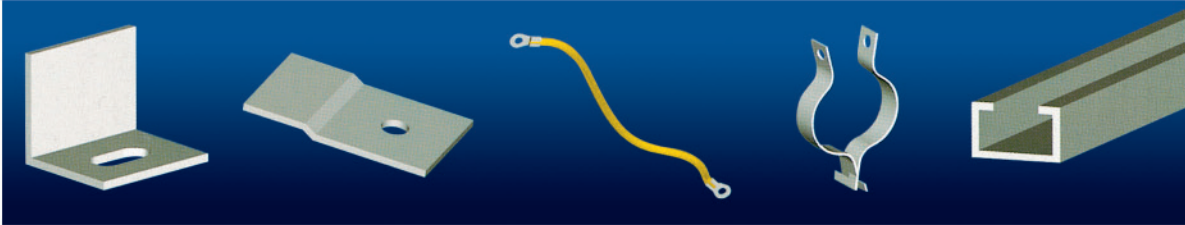
临墙托臂允许焊接在钢制墙体上。

Classification: the wall-mounted bracket can be divided into vertical one and horizontal one.

Option of type: the horizontal bracket should be used when the cable tray is installed horizontally along the wall and the vertical bracket should be used when the cable tray is installed vertically along the wall. For vertical installation, type A (plate bended type) is used when the width of the cable tray used is less than or equal to 400mm, and type B (Angle steel type) is used when the width of the cable tray used is more than 400mm or the distance between the cable tray and the wall is over 100mm.

Installation: For horizontal bracket, firstly fix the bracket on the wall with M12*10 expansion bolts, and then place the cable tray. For vertical bracket, firstly fix the cable tray to the bracket, and then fix it on the wall with M12*10 expansion bolts. The bracket is allowed to be welded to the steel wall.

■ 安装附件 Installation of Accessories



托臂挡板
bracket baffle
SLJ-FJ-01

固定压片
fixing plate
SLJ-FJ-02

接地线
grounding wire
SLJ-FJ-03

电缆卡子
cable clamp
SLJ-FJ-04

电缆滑槽
cable channel
SLJ-FJ-05

功能: 托臂挡板用于防止槽式桥架在托臂上向外滑落，固定压片用于梯式电缆桥架与托臂之间的固定，接地线用于电缆桥架之间的电气连接，电缆卡子用于较大电缆在桥架内的固定敷设，与电缆滑槽配合使用。

Function: the bracket baffle is used to prevent the trough cable from sliding outward on the bracket. The fixing plate is used to fix the ladder cable tray to the bracket. The grounding is used for electric connection between cable trays. The cable clamp is used for fixed the laying of big cables in the cable tray and it is used together with cable channel.

铝合金电缆桥架 LQJ系列

LQJ系列铝合金桥架是清华大学与我厂联合开发研制成功的新型产品。随着现代化工业的迅速发展，动力电缆、控制电缆和通信电缆的需求量猛增，因此，电缆桥架得到了广泛应用。它的作用能使厂用、船用乃至海上采油平台的电缆敷设实现了标准化、系列化和通用化的要求，为工程设计、施工安装、安全生产提供了方便。

我们等效采用美国材料标准生产的铝合金桥架具有高抗蚀性能，由于对桥架铝型材截面设计的合理，整体结构紧凑，安装灵活多变致使本产品具有载荷大、重量轻、施工方便、外形美观等突观优点，在国内处于领先地位。

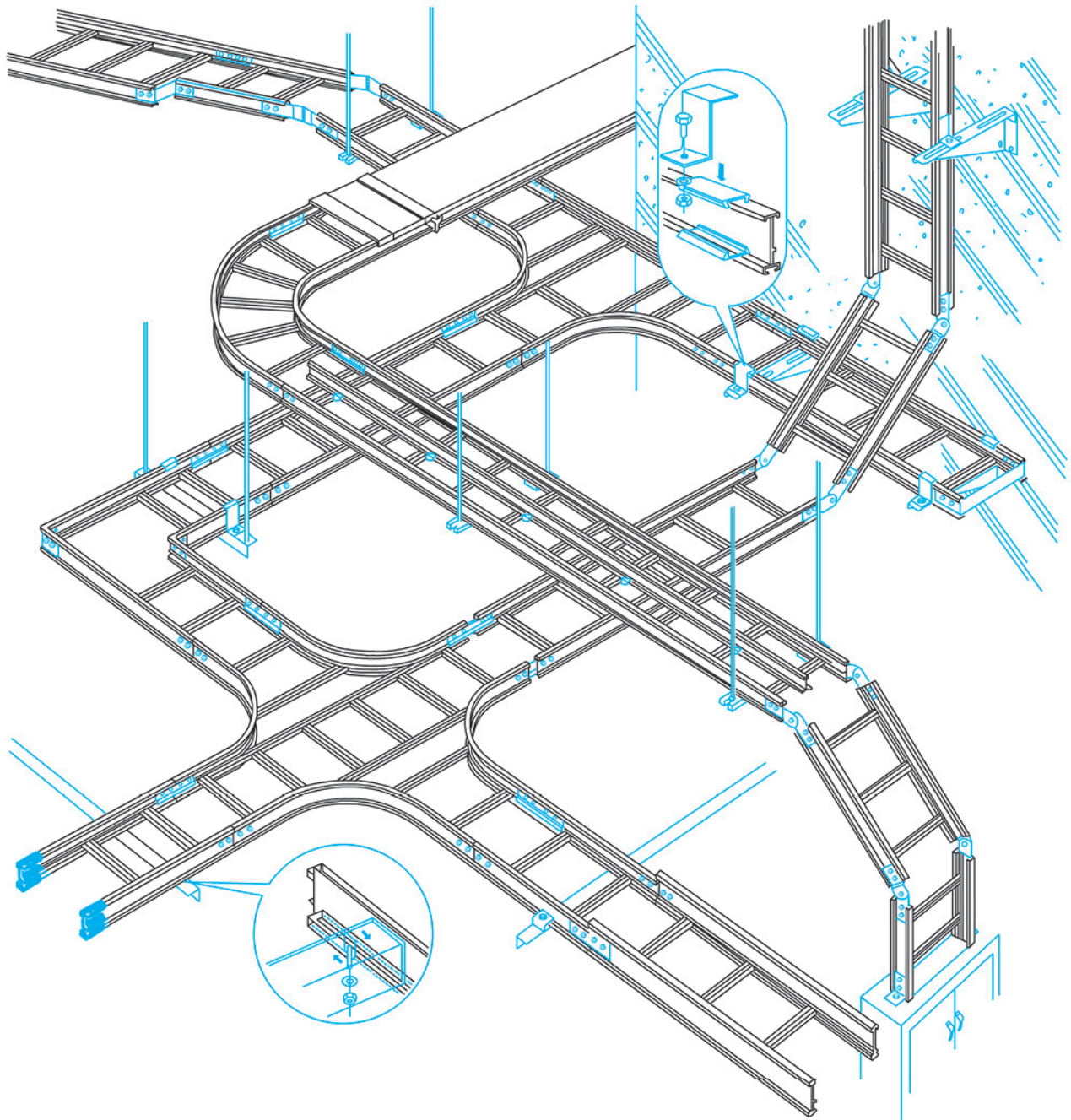
Aluminum Alloy Cable Tray LQJ series

The aluminum cable tray of LQJ series is a new product researched and produced by our company together with Qinhua University. With the rapid development of modern industry, the demand for power cable, control cable and communication cable increases quickly, therefore cable trays are widely used. Its function makes cable laying of factory, ship and even offshore oil production line realize the requirement of standardization, serialization universalization, providing convenience for project design, installation and safe production.

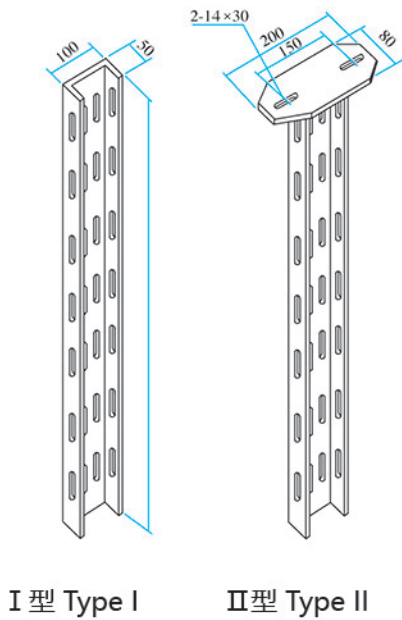
With the adoption of the standard which has the equivalent effect of American material standard, the aluminum cable tray produced by us has high corrosion resistance. The reasonable design of the cross section of aluminum material, compact structure and flexible installation makes the product have advantages of heavy load, light weight, convenient installation and nice appearance, taking the lead in China.

最新荣誉推出高防腐铝合金电缆桥架系列

NEWLY-PRODUCED SERIES OF HIGH ROTPROOF
ALUMINIUM ALLOY ELECTRIC CABLES BRIDGE FROMES



槽式立柱 XQJ-LQJ-H-01A
E-Channel Column Model LQJ-H-01A

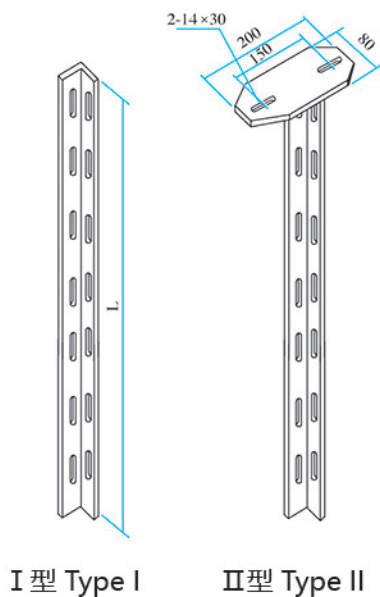


I 型 Type I

II 型 Type II

型号 Model	规格b Specification	重量 kg / 件 Wt kg/pc	备注 Remark
LQJ-H-01A-3	300	1.30	II型每件加重1kg Additional 1kg per piece for Type II
LQJ-H-01A-5	500	2.16	
LQJ-H-01A-8	800	3.46	
LQJ-H-01A-10	1000	4.32	
LQJ-H-01A-15	1500	6.48	
LQJ-H-01A-20	2000	8.64	

槽式立柱 XQJ-LQJ-H-01B
E-Channel Column Model LQJ-H-01B

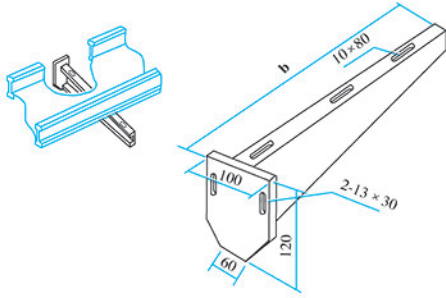


I 型 Type I

II 型 Type II

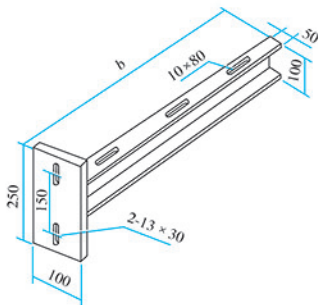
型号 Model	规格b Specification	重量 kg / 件 Wt kg/pc	备注 Remark
LQJ-H-01B-3	300	0.9	II型每件加重1kg Additional 1kg per piece for Type II
LQJ-H-01B-5	500	1.15	
LQJ-H-01B-8	800	2	
LQJ-H-01B-10	1000	3.05	
LQJ-H-01B-15	1500	4.2	
LQJ-H-01B-20	2000	5.9	

托臂XQJ-LQJ-TB-01 Corbel Model LQJ-TB-01



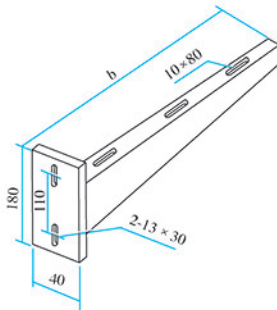
型号 Model	规格b Specification	重量 kg / 件 Wt kg/pc	备注 Remark
LQJ-TB-01-150	250	0.77	连接螺栓M12 Linked to bolts M12
LQJ-TB-01-200	300	0.83	
LQJ-TB-01-300	400	0.97	
LQJ-TB-01-400	500	1.15	
LQJ-TB-01-500	600	1.38	
LQJ-TB-01-600	700	1.61	
LQJ-TB-01-800	900	2.08	
LQJ-TB-01-1000	1100	2.68	

托臂XQJ-LQJ-TB-02 Corbel Model LQJ-TB-02



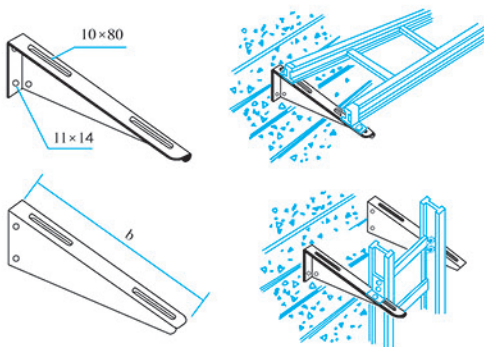
型号 Model	规格b Specification	重量 kg / 件 Wt kg/pc	备注 Remark
LQJ-TB-02-150	250	2.4	连接螺栓M12 Linked to bolts M12
LQJ-TB-02-200	300	2.7	
LQJ-TB-02-300	400	3.3	
LQJ-TB-02-400	500	3.9	
LQJ-TB-02-500	600	4.5	
LQJ-TB-02-600	700	5.6	
LQJ-TB-02-800	900	6.3	
LQJ-TB-02-1000	1100	7.5	

托臂XQJ-LQJ-TB-03 Corbel Model LQJ-TB-03



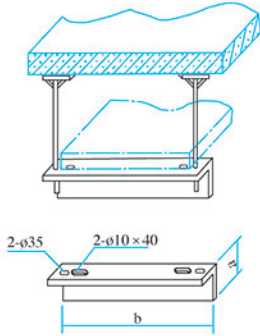
型号 Model	规格b Specification	重量 kg / 件 Wt kg/pc	备注 Remark
LQJ-TB-03-150	250	0.59	连接螺栓M12 x35 Linked to bolts M12x35
LQJ-TB-03-200	300	0.62	
LQJ-TB-03-300	400	0.85	
LQJ-TB-03-400	500	1.08	
LQJ-TB-03-500	600	1.31	
LQJ-TB-03-600	700	1.54	
LQJ-TB-03-800	900	2.01	
LQJ-TB-03-1000	1100	2.46	

托臂XQJ-LQJ-TB-04 Corbel Model LQJ-TB-04

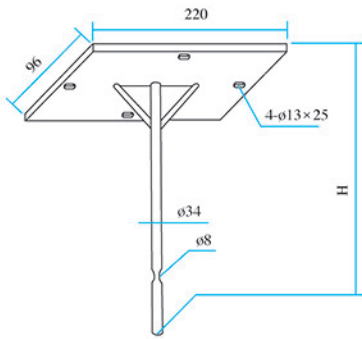


型号 Model	规格b Specification	重量 kg / 件 Wt kg/pc	备注 Remark
LQJ-TB-04-150	250	0.63	连接螺栓M8 x25 Linked to bolts M8x25
LQJ-TB-04-200	300	0.87	
LQJ-TB-04-300	400	1.13	
LQJ-TB-04-400	500	1.37	
LQJ-TB-04-500	600	2.15	
LQJ-TB-04-600	700	2.28	
LQJ-TB-04-700	800	3.89	
LQJ-TB-04-800	900	4.53	
LQJ-TB-04-1000	1100	5.40	

悬吊式横梁及吊杆 XQJ-LQJ-H-02A-02B
Cable Trays Beams and Sling Model XQJ-LQJ-H-02A-02B

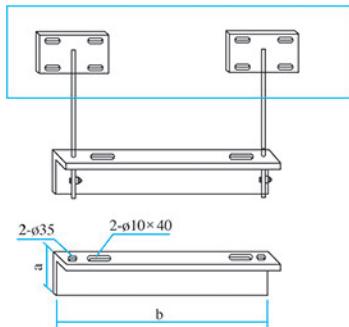


型号 Model	b	a	重量 kg / 件 Wt kg/pc
02B-5	500	60	1.43
02B-6	600	60	1.72
02B-8	800	80	2.59
02B-10	1000	80	3.23
02B-12	1200	80	3.88

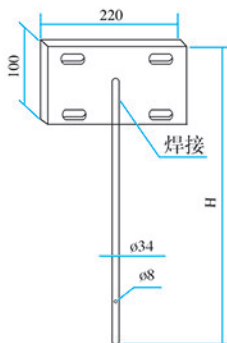


型号 Model	H	重量 kg / 件 Wt kg/pc
02A-5	500	2.68
02A-6	1000	4.59
02A-8	1500	6.50
02A-10	2000	8.42
02A-12	2500	10.33

悬吊式横梁及吊杆 XQJ-LQJ-H-02B-02C
Cable Trays Beams and Sling Model XQJ-LQJ-H-02B-02C



型号 Model	b	a	重量 kg / 件 Wt kg/pc
02B-5	500	60	1.43
02B-6	600	60	1.72
02B-8	800	80	2.59
02B-10	1000	80	3.23
02B-12	1200	80	3.88



型号 Model	H	重量 kg / 件 Wt kg/pc
02C-5	500	2.51
02C-6	1000	4.46
02C-8	1500	6.47
02C-10	2000	8.34
02C-12	2500	10.31

型式和技术参数

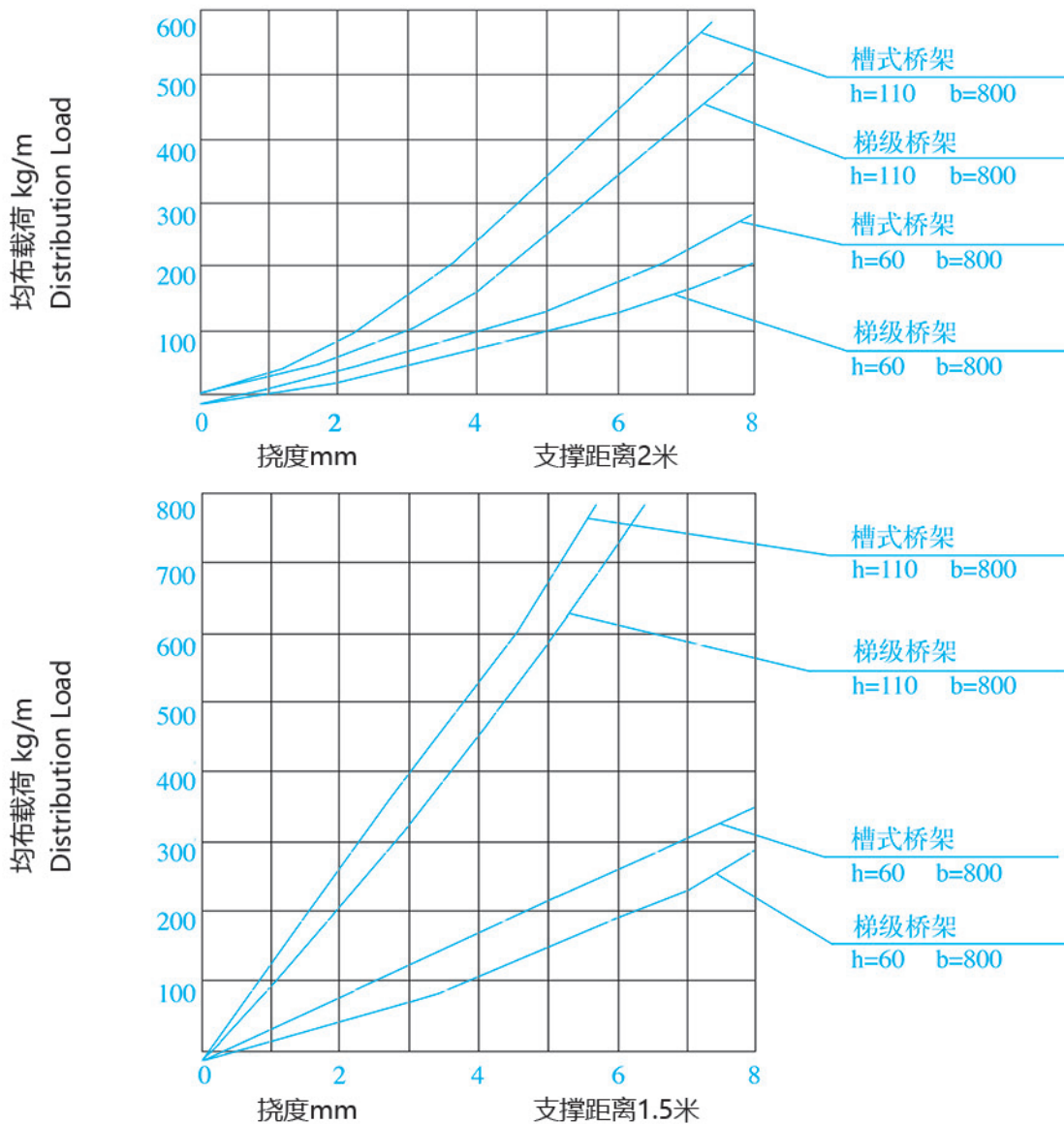
- 1.XQJ-LQJ 系列铝合金桥架可分为梯级式、槽式，分别用T、C表示。
- 2.梯级式桥架具有良好的通风性能，不防尘，不防干扰。槽式桥架具有防尘、防干扰性能。
- 3.桥架长度 $\leq 6m$ ，当长度 $> 6m$ 时可接受特殊订货。
- 4.梯级式、槽式载荷性能参照下图：

Types and Technical Parameters

The aluminum alloy cable tray of XQJ-LQJ series can be divided into ladder and trough one. Use T and C for representation respectively

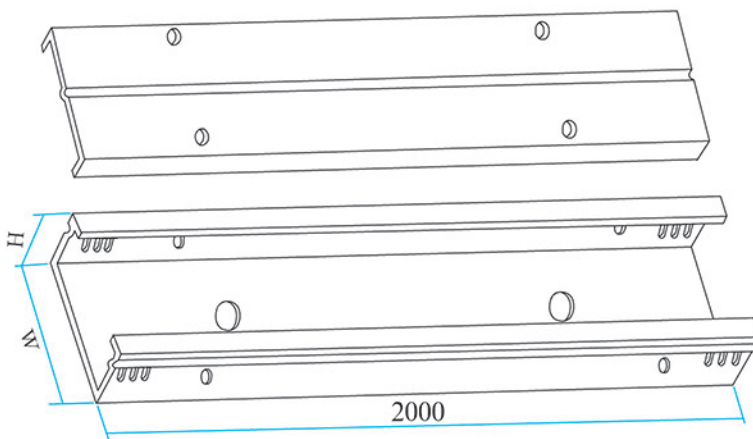
Ladder cable tray has good ventilation performance and does not prevent duct or interference. The trough cable tray is dustproof and interference-proof.

The length of cable tray is less or equal to 6m. Special orders can be accepted when the length is more than 6m, For the load performance of ladder and trough cable tray, please refer to the following chart



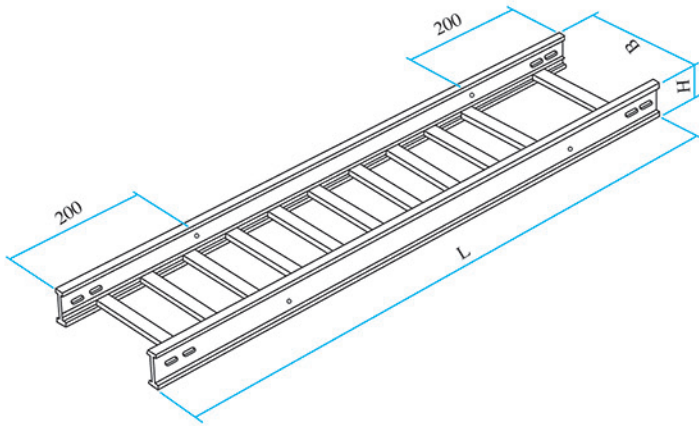
LQJ-WC型配线桥架

LQJ-WC Wiring Cable Tray Model



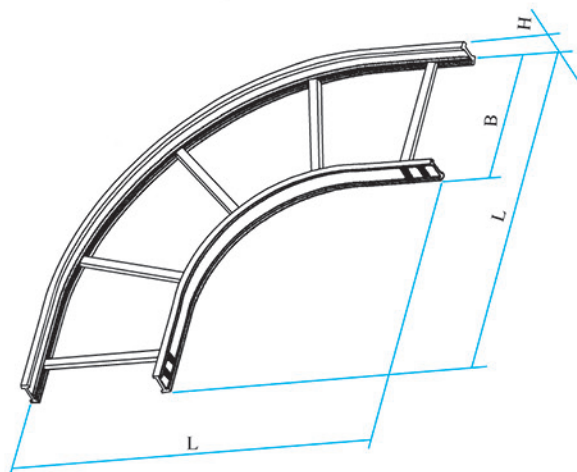
型号 Model	H	W	重量 Weight
LQJ-WC-2.5-5	25	50	2.73
LQJ-WC-2.5-10		100	4.61
LQJ-WC-2.5-15		150	5.07
LQJ-WC-2.5-20		200	7.67
LQJ-WC5-5	50	50	3.20
LQJ-WC5-10		100	5.12
LQJ-WC5-15		150	6.96
LQJ-WC5-20		200	8.19
LQJ-WC10-5	100	100	6.18
LQJ-WC10-10		150	8.02
LQJ-WC10-15		200	9.24
LQJ-WC10-20		250	11.08

XQJ-LQJ-T型梯级式桥架 LQJ-T Ladder Frame



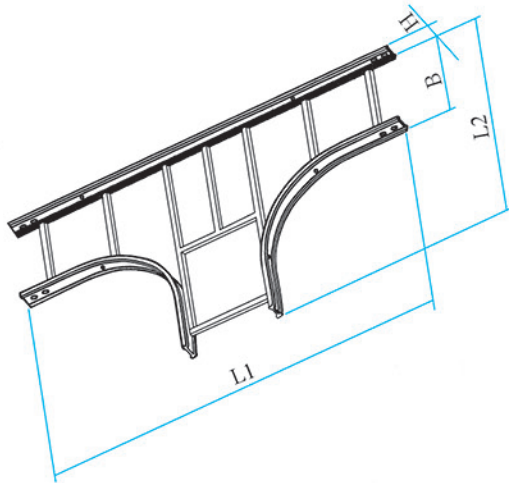
型号 Model	宽度 B	高度 H	重量 (kg)	护罩 Cover
LQJ-T-6-10	100	60	6.33	2.71
LQJ-T-6-20	200		7.12	4.72
LQJ-T-6-30	300		7.79	6.68
LQJ-T-6-40	400		8.88	8.66
LQJ-T-11-20	200	110	9.44	4.72
LQJ-T-11-30	300		10.06	6.68
LQJ-T-11-40	400		11.54	8.66
LQJ-T-11-50	500		12.21	12.75
LQJ-T-11-60	600		12.86	15.11
LQJ-T-11-80	800		14.20	23.13
LQJ-T-11-100	1000		15.54	28.63
LQJ-T-14-40	400	140	13.13	8.66
LQJ-T-14-50	600		14.45	15.11
LQJ-T-14-60	800		15.80	23.13
LQJ-T-14-80	1000		17.14	28.63
LQJ-T-14-100	400	180	15.91	8.66
LQJ-T-18-60	600		17.59	15.11
LQJ-T-18-80	800		19.16	23.13
LQJ-T-18-100	1000		20.88	28.63
LQJ-T-20-40	400	200	16.24	8.66
LQJ-T-20-60	600		19.58	15.11
LQJ-T-20-80	800		21.59	23.13
LQJ-T-20-100	1000		23.58	28.63

XQJ-LQJ-RT型水平弯通 LQJ-RT Horizontal Elbow



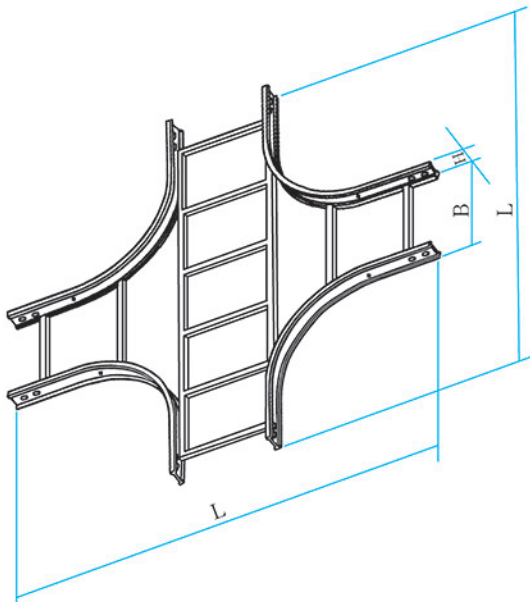
型号 Model	宽度 B	高度 H	L R=300	重量 (kg)	护罩 Cover
LQJ-RT-6-10	100	60	600	3.51	0.84
LQJ-RT-6-20	200		700	3.68	1.62
LQJ-RT-6-30	300		800	4.52	2.51
LQJ-RT-6-40	400		900	5.35	4.70
LQJ-RT-11-20	200	110	700	4.82	1.62
LQJ-RT-11-30	300		800	5.88	2.51
LQJ-RT-11-40	400		900	6.86	4.70
LQJ-RT-11-50	500		1000	8.26	6.24
LQJ-RT-11-60	600		1100	10.08	8.72
LQJ-RT-11-80	800	140	1200	12.74	13.40
LQJ-RT-11-100	1000		1300	15.68	16.02
LQJ-RT-14-40	400		900	9.24	4.70
LQJ-RT-14-50	600		1100	10.64	8.72
LQJ-RT-14-60	800	180	1300	15.26	13.40
LQJ-RT-14-80	1000		1500	18.06	16.02
LQJ-RT-14-100	400		900	11.62	4.70
LQJ-RT-18-60	600	200	1100	13.02	8.72
LQJ-RT-18-80	800		1300	17.64	13.40
LQJ-RT-18-100	1000		1500	20.44	16.02
LQJ-RT-20-40	400	200	900	14.00	4.70
LQJ-RT-20-60	600		1100	15.40	8.72
LQJ-RT-20-80	800		1300	20.02	13.40
LQJ-RT-20-100	1000		1500	22.82	16.02

XQJ-LQJ-ST型水平三通
LQJ-ST Horizontal Elbow



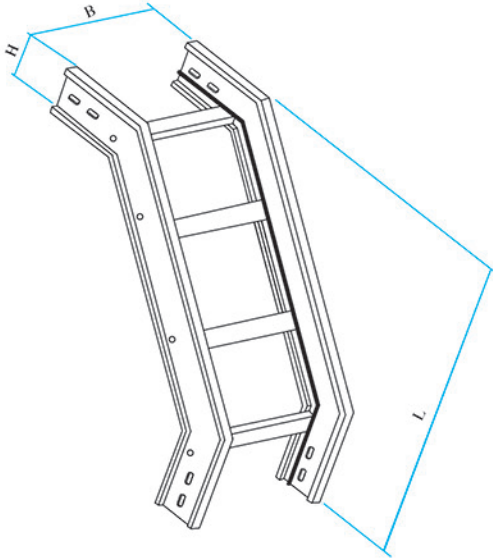
型号 Model	宽度 B	高度 H	L1 R=300	L2 R=300	重量 (kg)	护罩 Cover
LQJ-ST-6-10	100	60	1100	600	4.98	1.52
LQJ-ST-6-20	200		1200	700	5.85	2.93
LQJ-ST-6-30	300		1300	800	6.84	4.52
LQJ-ST-6-40	400		1400	900	7.28	8.46
LQJ-ST-11-20	200	110	1200	700	7.83	2.93
LQJ-ST-11-30	300		1300	800	8.74	4.52
LQJ-ST-11-40	400		1400	900	9.98	8.46
LQJ-ST-11-50	500		1500	1000	10.64	11.22
LQJ-ST-11-60	600		1600	1100	11.87	12.54
LQJ-ST-11-80	800		1800	1200	15.45	24.11
LQJ-ST-11-100	1000		2000	1300	19.02	28.83
LQJ-ST-14-40	400	140	1400	900	12.01	8.46
LQJ-ST-14-50	600		1600	1100	14.56	12.45
LQJ-ST-14-60	800		1800	1300	17.29	24.11
LQJ-ST-14-80	1000		2000	1500	19.72	28.83
LQJ-ST-14-100	400	180	1400	900	14.38	8.46
LQJ-ST-18-60	600		1600	1100	16.93	12.54
LQJ-ST-18-80	800		1800	1300	19.66	24.11
LQJ-ST-18-100	1000		2000	1500	22.09	28.83
LQJ-ST-20-40	400	200	1400	900	17.70	8.46
LQJ-ST-20-60	600		1600	1100	21.32	12.54
LQJ-ST-20-80	800		1800	1300	26.21	24.11
LQJ-ST-20-100	1000		2000	1500	31.74	28.83

XQJ-LQJ-ST4型水平四通
LQJ-ST4 Horizontal Cross



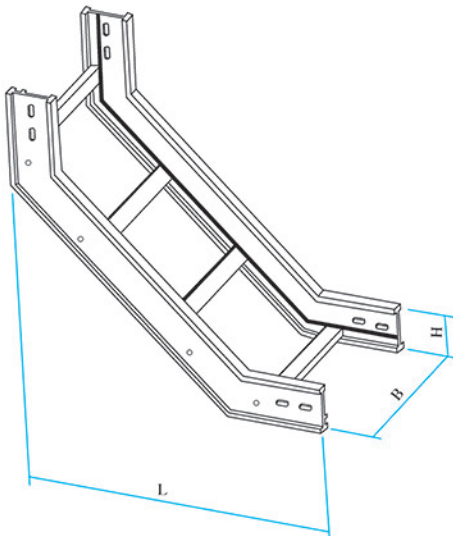
型号 Model	宽度 B	高度 H	L R=300	重量 (kg)	护罩 Cover
LQJ-ST4-6-10	100	60	1100	6.60	2.10
LQJ-ST4-6-20	200		1200	7.80	4.05
LQJ-ST4-6-30	300		1300	9.02	6.27
LQJ-ST4-6-40	400		1400	10.64	11.73
LQJ-ST4-11-20	200	110	1200	9.77	4.05
LQJ-ST4-11-30	300		1300	10.95	6.27
LQJ-ST4-11-40	400		1400	12.59	11.73
LQJ-ST4-11-50	500		1500	13.88	15.60
LQJ-ST4-11-60	600		1600	15.15	21.78
LQJ-ST4-11-80	800		1800	18.60	33.48
LQJ-ST4-11-100	1000		2000	22.50	40.09
LQJ-ST4-14-40	400	140	1400	13.41	11.73
LQJ-ST4-14-50	600		1600	15.96	21.78
LQJ-ST4-14-60	800		1800	18.69	33.48
LQJ-ST4-14-80	1000		2000	22.80	40.09
LQJ-ST4-14-100	400	180	1400	15.78	11.73
LQJ-ST4-18-60	600		1600	18.33	21.78
LQJ-ST4-18-80	800		1800	21.06	33.48
LQJ-ST4-18-100	1000		2000	24.21	40.09
LQJ-ST4-20-40	400	200	1400	21.90	11.73
LQJ-ST4-20-60	600		1600	25.76	21.78
LQJ-ST4-20-80	800		1800	30.90	33.48
LQJ-ST4-20-100	1000		2000	36.75	40.09

LQJ-TRT型凸型二通
LQJ-TRT Vertical Elbow



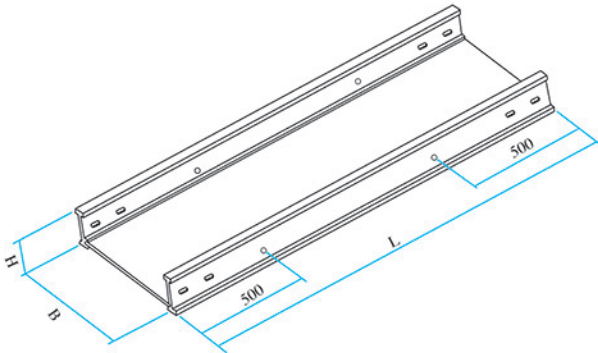
型号 Model	宽度 B	高度 H	L		重量 (kg)		护罩 Cover	
			R=300	R=600				
LQJ-TRT-6-10	100	60	560	860	1.40	1.58	0.91	1.32
LQJ-TRT-6-20	200				1.73	3.00	1.48	2.15
LQJ-TRT-6-30	300				2.04	3.56	2.05	2.98
LQJ-TRT-6-40	400				2.39	4.05	3.49	5.08
LQJ-TRT-11-20	200	110	610	910	2.39	3.45	1.62	2.29
LQJ-TRT-11-30	300				2.70	4.01	2.24	3.18
LQJ-TRT-11-40	400				3.00	4.50	3.81	5.43
LQJ-TRT-11-50	500				3.35	5.10	4.66	6.63
LQJ-TRT-11-60	600				3.68	5.55	6.86	9.76
LQJ-TRT-11-80	800				4.32	6.71	8.95	12.73
LQJ-TRT-11-100	1000	4.99	7.80	11.02	15.78			
LQJ-TRT-14-40	400	140	640	940	3.00	4.80	3.91	5.53
LQJ-TRT-14-50	600				3.60	5.55	7.11	10.01
LQJ-TRT-14-60	800				4.35	6.98	9.27	13.05
LQJ-TRT-14-80	1000				5.10	8.06	11.42	16.18
LQJ-TRT-14-100	400				3.05	4.86	4.22	5.84
LQJ-TRT-18-60	600	180	680	980	3.65	5.72	7.57	10.47
LQJ-TRT-18-80	800				4.37	7.04	9.87	13.65
LQJ-TRT-18-100	1000				5.15	8.12	12.15	16.91
LQJ-TRT-20-40	400	200	700	1000	5.94	8.55	4.34	5.96
LQJ-TRT-20-60	600				6.90	10.20	7.78	10.68
LQJ-TRT-20-80	800				7.89	11.85	10.15	13.93
LQJ-TRT-20-100	1000				8.85	13.47	12.50	17.26

LQJ-ART型凹型二通
LQJ-ART Vertical Elbow



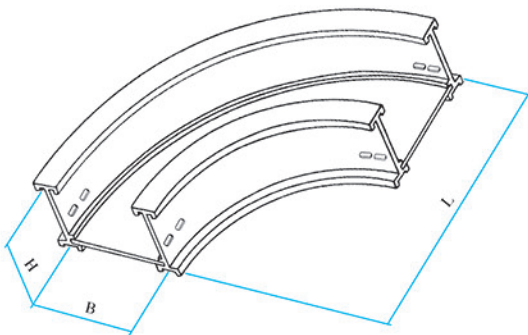
型号 Model	宽度 B	高度 H	L		重量 (kg)		护罩 Cover	
			R=300	R=600				
LQJ-ART-6-10	100	60	560	860	1.40	1.58	0.81	1.22
LQJ-ART-6-20	200				1.73	3.00	1.32	1.99
LQJ-ART-6-30	300				2.04	3.56	1.83	2.76
LQJ-ART-6-40	400				2.39	4.05	3.09	4.71
LQJ-ART-11-20	200	110	610	910	2.39	3.45	1.32	1.99
LQJ-ART-11-30	300				2.70	4.01	1.82	2.76
LQJ-ART-11-40	400				3.00	4.50	3.09	4.71
LQJ-ART-11-50	500				3.35	5.10	3.76	5.73
LQJ-ART-11-60	600				3.68	5.55	5.54	8.44
LQJ-ART-11-80	800				4.32	6.71	7.23	11.01
LQJ-ART-11-100	1000	4.99	7.80	8.90	13.66			
LQJ-ART-14-40	400	140	640	940	3.00	4.80	3.09	4.71
LQJ-ART-14-50	600				3.60	5.55	5.54	8.44
LQJ-ART-14-60	800				4.35	6.98	7.23	11.01
LQJ-ART-14-80	1000				5.10	8.06	8.90	13.66
LQJ-ART-14-100	400				3.05	4.86	3.09	4.71
LQJ-ART-18-60	600	180	680	980	3.65	5.72	5.54	8.44
LQJ-ART-18-80	800				4.37	7.04	7.23	11.01
LQJ-ART-18-100	1000				5.15	8.12	8.90	13.66
LQJ-ART-20-40	400	200	700	1000	5.94	8.55	3.09	4.71
LQJ-ART-20-60	600				6.90	10.20	5.54	8.44
LQJ-ART-20-80	800				7.89	11.85	7.23	11.01
LQJ-ART-20-100	1000				8.85	13.47	8.90	13.66

LQJ-C型槽式桥架 LQJ-C Trough-Shaped Frame



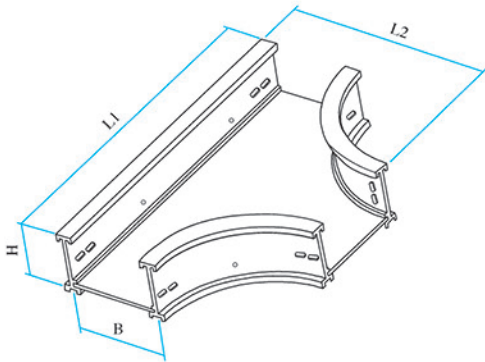
型号 Model	宽度 B	高度 H	重量 (kg)	护罩 Cover
LQJ-C-6-10	100	60	10.09	2.71
LQJ-C-6-20	200		11.10	4.72
LQJ-C-6-30	300		12.09	6.68
LQJ-C-6-40	400		13.13	8.66
LQJ-C-11-20	200	110	14.55	4.72
LQJ-C-11-30	300		15.57	6.68
LQJ-C-11-40	400		16.58	8.66
LQJ-C-11-50	500		19.22	12.75
LQJ-C-11-60	600		21.69	15.11
LQJ-C-11-80	800		29.85	23.13
LQJ-C-11-100	1000		35.46	28.63
LQJ-C-14-40	400	140	19.78	8.66
LQJ-C-14-50	600		21.80	15.11
LQJ-C-14-60	800		30.27	23.13
LQJ-C-14-80	1000	180	36.05	28.63
LQJ-C-14-100	400		24.10	8.66
LQJ-C-18-60	600		26.13	15.11
LQJ-C-18-80	800		30.96	23.13
LQJ-C-18-100	1000	200	36.86	28.63
LQJ-C-20-40	400		23.58	8.66
LQJ-C-20-60	600		31.25	15.11
LQJ-C-20-80	800		40.31	23.13
LQJ-C-20-100	1000		46.95	28.63

LQJ-RC型水平弯通 LQJ-RC Horizontal Elbow



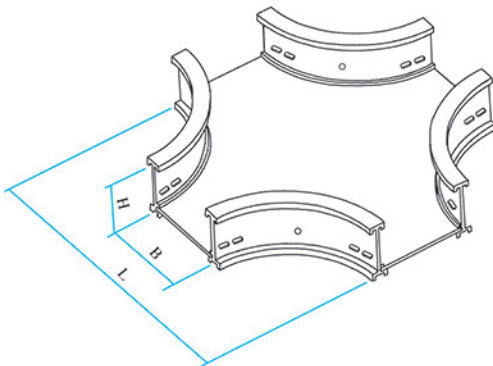
型号 Model	宽度 B	高度 H	L R=300	重量 (kg)	护罩 Cover
LQJ-RC-6-10	100	60	600	3.75	0.84
LQJ-RC-6-20	200		700	4.36	1.62
LQJ-RC-6-30	300		800	5.60	2.51
LQJ-RC-6-40	400		900	6.99	4.70
LQJ-RC-11-20	200	110	700	6.04	1.62
LQJ-RC-11-30	300		800	7.05	2.51
LQJ-RC-11-40	400		900	8.23	4.70
LQJ-RC-11-50	500		1000	9.91	6.24
LQJ-RC-11-60	600		1100	12.56	8.72
LQJ-RC-11-80	800		1200	16.85	13.40
LQJ-RC-11-100	1000		1300	23.88	16.02
LQJ-RC-14-40	400	140	900	14.70	4.70
LQJ-RC-14-50	600		1100	12.76	8.72
LQJ-RC-14-60	800		1300	18.30	13.40
LQJ-RC-14-80	1000	180	1500	24.23	16.02
LQJ-RC-14-100	400		900	16.26	4.70
LQJ-RC-18-60	600		1100	15.62	8.72
LQJ-RC-18-80	800		1300	21.16	13.40
LQJ-RC-18-100	1000	200	1500	24.52	16.02
LQJ-RC-20-40	400		900	16.80	4.70
LQJ-RC-20-60	600		1100	19.19	8.72
LQJ-RC-20-80	800		1300	24.70	13.40
LQJ-RC-20-100	1000		1500	32.93	16.02

LQJ-SC1型水平三通
LQJ-SC Horizontal Elbow



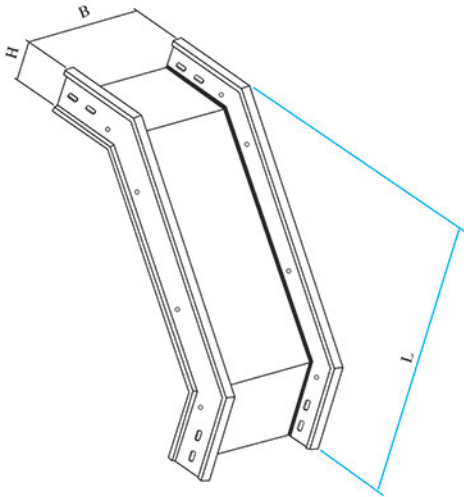
型号 Model	宽度 B	高度 H	L1 R=300	L2 R=300	重量 (kg)	护罩 Cover
LQJ-SC-6-10	100	60	1100	600	5.73	1.52
LQJ-SC-6-20	200		1200	700	7.98	2.92
LQJ-SC-6-30	300		1300	800	10.13	4.52
LQJ-SC-6-40	400		1400	900	11.90	8.46
LQJ-SC-11-20	200	110	1200	700	9.62	2.93
LQJ-SC-11-30	300		1300	800	11.82	4.52
LQJ-SC-11-40	400		1400	900	14.64	8.46
LQJ-SC-11-50	500		1500	1000	21.26	11.22
LQJ-SC-11-60	600		1600	1100	25.04	12.54
LQJ-SC-11-80	800		1800	1200	33.11	24.11
LQJ-SC-11-100	1000		2000	1300	44.22	28.83
LQJ-SC-14-40	400	140	1400	900	14.90	8.46
LQJ-SC-14-50	600		1600	1100	22.71	12.45
LQJ-SC-14-60	800		1800	1300	33.29	24.11
LQJ-SC-14-80	1000		2000	1500	44.52	28.83
LQJ-SC-14-100	400	180	1400	900	17.25	8.46
LQJ-SC-18-60	600		1600	1100	24.05	12.54
LQJ-SC-18-80	800		1800	1300	34.73	24.11
LQJ-SC-18-100	1000		2000	1500	44.67	28.83
LQJ-SC-20-40	400	200	1400	900	22.36	8.46
LQJ-SC-20-60	600		1600	1100	46.52	12.54
LQJ-SC-20-80	800		1800	1300	43.88	24.11
LQJ-SC-20-100	1000		2000	1500	56.85	28.83

LQJ-SC4型水平四通
LQJ-SC4 Horizontal Cross



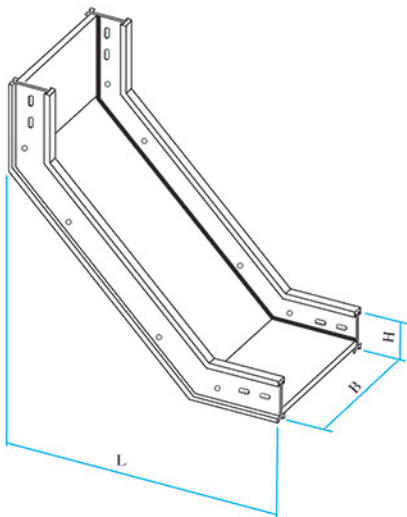
型号 Model	宽度 B	高度 H	L R=300	重量 (kg)	护罩 Cover
LQJ-ST4-6-10	100	60	1100	8.10	2.10
LQJ-ST4-6-20	200		1200	10.74	4.05
LQJ-ST4-6-30	300		1300	13.44	6.27
LQJ-ST4-6-40	400		1400	16.70	11.73
LQJ-ST4-11-20	200	110	1200	12.71	4.05
LQJ-ST4-11-30	300		1300	15.39	6.27
LQJ-ST4-11-40	400		1400	18.65	11.73
LQJ-ST4-11-50	500		1500	24.23	15.60
LQJ-ST4-11-60	600		1600	28.05	21.78
LQJ-ST4-11-80	800		1800	41.84	33.48
LQJ-ST4-11-100	1000		2000	53.82	40.09
LQJ-ST4-14-40	400	140	1400	18.96	11.73
LQJ-ST4-14-50	600		1600	28.35	21.78
LQJ-ST4-14-60	800		1800	41.84	33.48
LQJ-ST4-14-80	1000		2000	54.12	40.09
LQJ-ST4-14-100	400	180	1400	19.05	11.73
LQJ-ST4-18-60	600		1600	28.44	21.78
LQJ-ST4-18-80	800		1800	41.93	33.48
LQJ-ST4-18-100	1000		2000	54.21	40.09
LQJ-ST4-20-40	400	200	1400	27.96	11.73
LQJ-ST4-20-60	600		1600	38.66	21.78
LQJ-ST4-20-80	800		1800	53.84	33.48
LQJ-ST4-20-100	1000		2000	68.07	40.09

LQJ-TRC型凸型二通 LQJ-TRC Vertical Elbow



型号 Model	宽度 B	高度 H	L		重量 (kg)		护罩 Cover	
			R=300	R=600				
LQJ-TRC-6-10	100	60	560	860	1.82	2.21	0.91	1.32
LQJ-TRC-6-20	200				2.66	4.40	1.48	2.15
LQJ-TRC-6-30	300				3.47	5.72	2.05	2.98
LQJ-TRC-6-40	400				4.31	6.96	3.49	5.08
LQJ-TRC-11-20	200	110	610	910	3.32	4.85	1.62	2.29
LQJ-TRC-11-30	300				4.13	6.17	2.24	3.18
LQJ-TRC-11-40	400				4.92	7.41	3.81	5.43
LQJ-TRC-11-50	500				6.57	10.01	4.66	6.63
LQJ-TRC-11-60	600				7.85	11.48	6.86	9.76
LQJ-TRC-11-80	800				10.88	16.64	8.95	12.73
LQJ-TRC-11-100	1000				13.17	20.25	11.02	15.78
LQJ-TRC-14-40	400	140	640	940	4.92	7.71	3.91	5.53
LQJ-TRC-14-50	600				7.50	11.78	7.11	10.01
LQJ-TRC-14-60	800				10.91	16.91	9.27	13.05
LQJ-TRC-14-80	1000				13.32	20.51	11.42	16.18
LQJ-TRC-14-100	400				4.97	7.77	4.22	5.84
LQJ-TRC-18-60	600	180	680	980	7.55	11.84	7.57	10.47
LQJ-TRC-18-80	800				10.95	16.97	9.87	13.65
LQJ-TRC-18-100	1000				13.37	20.57	12.15	16.91
LQJ-TRC-20-40	400	200	700	1000	8.13	11.46	4.34	5.96
LQJ-TRC-20-60	600				10.80	16.13	7.78	10.68
LQJ-TRC-20-80	800				14.45	21.78	10.15	13.93
LQJ-TRC-20-100	1000				17.07	25.92	12.50	17.26

LQJ-ARC型凹型二通 LQJ-ARC Vertical Elbow



型号 Model	宽度 B	高度 H	L		重量 (kg)		护罩 Cover	
			R=300	R=600				
LQJ-ART-6-10	100	60	560	860	1.88	2.27	0.81	1.22
LQJ-ART-6-20	200				2.76	4.50	1.32	1.99
LQJ-ART-6-30	300				3.65	5.90	1.83	2.76
LQJ-ART-6-40	400				4.26	7.20	3.09	4.71
LQJ-ART-11-20	200	110	610	910	3.53	4.19	1.32	1.99
LQJ-ART-11-30	300				4.44	6.48	1.82	2.76
LQJ-ART-11-40	400				5.36	7.85	3.09	4.71
LQJ-ART-11-50	500				7.31	10.73	3.76	5.73
LQJ-ART-11-60	600				8.45	12.30	5.54	8.44
LQJ-ART-11-80	800				12.33	18.08	7.23	11.01
LQJ-ART-11-100	1000				13.30	22.07	8.90	13.66
LQJ-ART-14-40	400	140	640	940	5.48	8.25	3.09	4.71
LQJ-ART-14-50	600				8.60	12.89	5.54	8.44
LQJ-ART-14-60	800				12.75	18.78	7.23	11.01
LQJ-ART-14-80	1000				15.63	22.88	8.9	13.66
LQJ-ART-14-100	400				4.97	7.77	3.09	4.71
LQJ-ART-18-60	600	180	680	980	7.55	11.84	5.54	8.44
LQJ-ART-18-80	800				10.95	16.97	7.23	11.01
LQJ-ART-18-100	1000				13.37	20.57	8.90	13.66
LQJ-ART-20-40	400	200	700	1000	8.64	12.21	3.09	4.71
LQJ-ART-20-60	600				12.38	17.63	5.54	8.44
LQJ-ART-20-80	800				17.09	24.30	7.23	11.01
LQJ-ART-20-100	1000				20.39	29.09	8.90	13.66

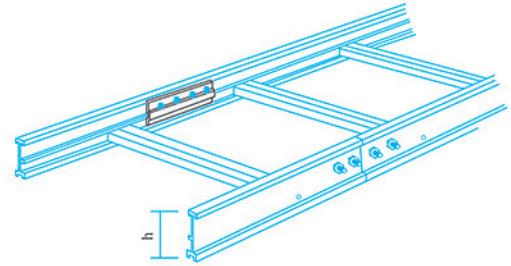
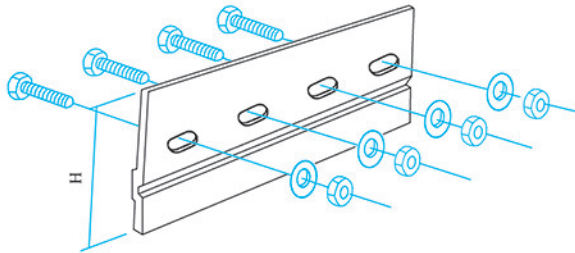
连接件 LQJ-FJ-01

A
B
C

Connector Model LQJ-FJ-01

A
B
C

六角 M8 × 20



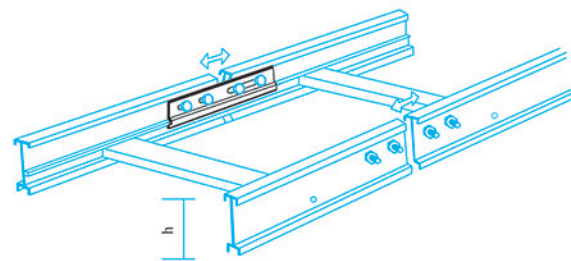
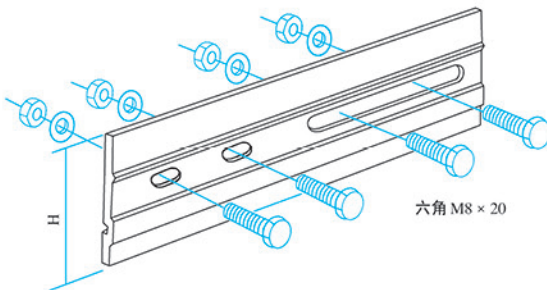
型号 Model	配套高度 h	H	单价元/件 unit/pc	备注 Remark
LQJ-FJ-01A-60	60	46	9.80	4只连接孔 4 holes in connectors
LQJ-FJ-01A-110	110	96	13.80	
LQJ-FJ-01B-140	140	126	19.50	8只连接孔 8 holes in connectors
LQJ-FJ-01C-180	180	164	24.20	
LQJ-FJ-01C-200	200	184	28.50	

伸缩连接件 LQJ-FJ-02

A
B
C

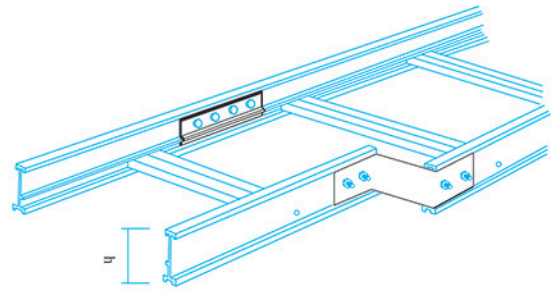
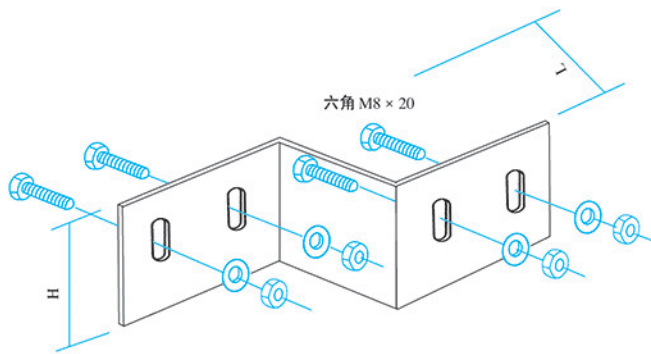
Connector Model LQJ-FJ-02

A
B
C



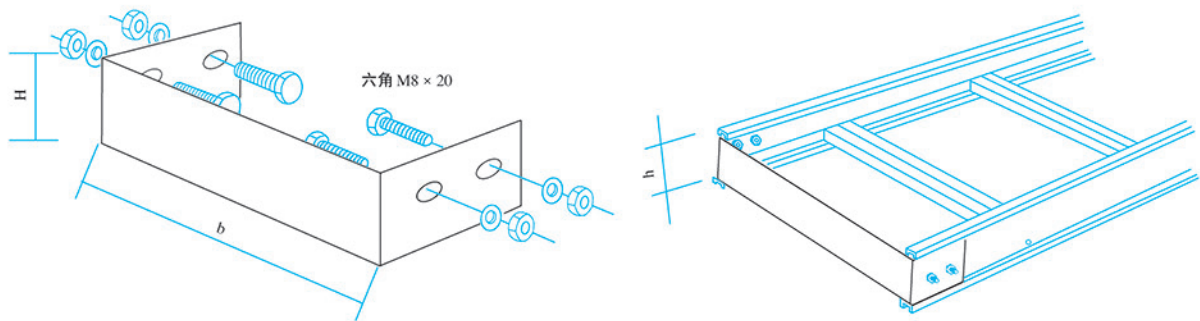
型号 Model	配套高度 h	H	单价元/件 unit/pc	备注 Remark
LQJ-FJ-02A-60	60	46	9.80	4只连接孔 4 holes in connectors
LQJ-FJ-02A-110	110	96	13.80	
LQJ-FJ-02B-140	140	126	19.50	8只连接孔 8 holes in connectors
LQJ-FJ-02C-180	180	164	24.20	
LQJ-FJ-02C-200	200	184	28.50	

调宽片 LQ-FJ-03
Width Modulator Model LQ-FJ-03



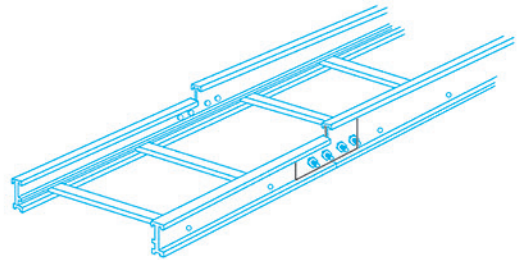
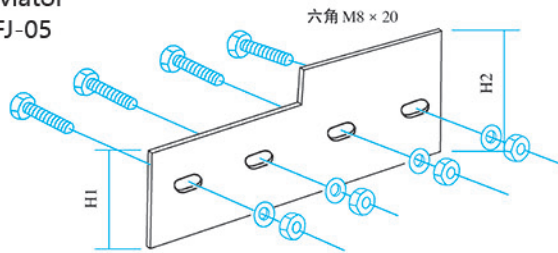
型号 Model	配套高度 Height		L	单价元/件 unit /price (\$)	型号 Model	配套高度 Height		L	单价元/件 unit /price (\$)	
	h	H				h	H			
LQ-FJ-03-1	60	47	50	6.60	LQ-FJ-03-19	180	165	100	37.20	
LQ-FJ-03-2			100	9.80	LQ-FJ-03-20			150	46.20	
LQ-FJ-03-3			150	13.00	LQ-FJ-03-21			200	55.20	
LQ-FJ-03-4			200	16.20	LQ-FJ-03-22			300	64.20	
LQ-FJ-03-5			300	21.80	LQ-FJ-03-23			50	32.30	
LQ-FJ-03-6	110	90	50	9.20	LQ-FJ-03-24	200	185	100	41.30	
LQ-FJ-03-7			100	13.70	LQ-FJ-03-25			150	50.30	
LQ-FJ-03-8			150	18.20	LQ-FJ-03-26			200	59.30	
LQ-FJ-03-9			200	22.70	LQ-FJ-03-27			300	68.30	
LQ-FJ-03-10			250	27.20						
LQ-FJ-03-11		300	31.70	备注: Remark 高度h为60、110、140 4只连接孔 4 holes in connectors of width modulator with a height of 60mm 110mm and 140mm. 高度h为180、200 8只连接孔 8 holes in connectors of width modulator with a height of 180mm and 200mm.						
LQ-FJ-03-12		400	36.20							
LQ-FJ-03-13	140	127	50							18.00
LQ-FJ-03-14			100							27.10
LQ-FJ-03-15			150							36.00
LQ-FJ-03-16			200							45.00
LQ-FJ-03-17			300							54.00
LQ-FJ-03-18		50								

终端封头 LQJ-FJ-04
End Blockate Model LQJ-FJ-04



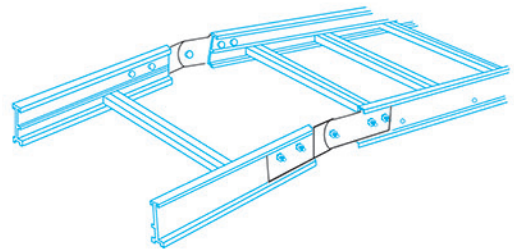
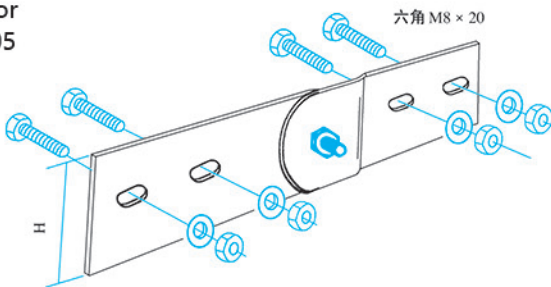
型号 Model	配套高度 h Height	H	b	重量 (kg) Weight	备注 Remark
LQJ-FJ-04-1	60	47	105	0.08	高度h为60、110、140、 4只 连接孔 4 holes in connectors of width modulator with a height of 180mm and 200mm.
LQJ-FJ-04-2			205	0.15	
LQJ-FJ-04-3			305	0.23	
LQJ-FJ-04-4			405	0.30	
LQJ-FJ-04-5	110	97	205	0.33	
LQJ-FJ-04-6			305	0.50	
LQJ-FJ-04-7			405	0.66	
LQJ-FJ-04-8			505	0.83	
LQJ-FJ-04-9			605	0.97	
LQJ-FJ-04-10			805	1.31	
LQJ-FJ-04-11	140	127	1005	1.64	
LQJ-FJ-04-12			405	1.22	
LQJ-FJ-04-13			605	1.82	
LQJ-FJ-04-14			805	2.42	
LQJ-FJ-04-15			1005	3.02	
LQJ-FJ-04-16			180	165	405
LQJ-FJ-04-17	605	1.73			
LQJ-FJ-04-18	805	2.29			
LQJ-FJ-04-19	1005	2.87			
LQJ-FJ-04-20	200	185	405	1.28	
LQJ-FJ-04-21			605	1.91	
LQJ-FJ-04-22			805	2.54	
LQJ-FJ-04-23			1005	3.17	

调高片 LQ-FJ-05
Height Modvlator
Model LQ-FJ-05



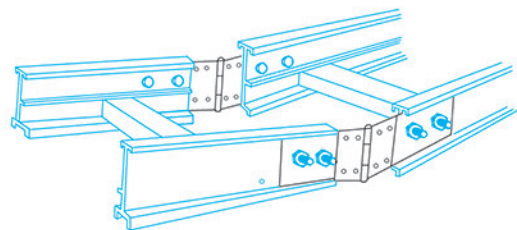
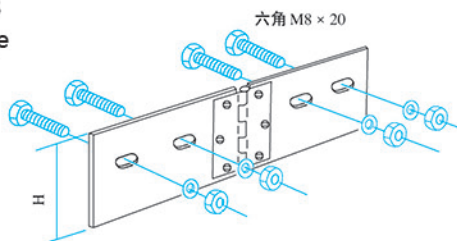
型号 Model	H ₁	H ₂	单价元/件 unit/price	备注 Remark
LQ-FJ-05-60/110	47	97	10.60	高度60调110 From 60mm to 100mm
LQ-FJ-05-60/140	47	127	15.10	高度60调140 From 60mm to 140mm
LQ-FJ-05-110/140	97	127	17.10	高度110调140 From 110mm to 140mm
LQ-FJ-05-140/180	127	165	21.80	高度140调180 From 140mm to 180mm
LQ-FJ-05-180/200	165	185	27.30	高度180调200 From 180mm to 200mm

调角片 LQ-FJ-05
Angle Modvlator
Model LQ-FJ-05



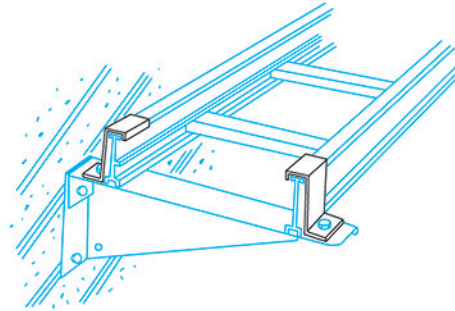
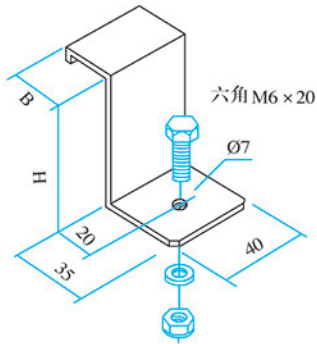
型号 Model	H	单价元/件 unit/price	备注 Remark
LQ-FJ-06-60	47	18.10	4只连接孔 4 holes in connectors
LQ-FJ-06-110	97	31.20	
LQ-FJ-06-140	127	36.80	
LQ-FJ-06-180	165	42.70	8只连接孔 8 holes in connectors
LQ-FJ-06-200	185	48.30	

水平转角铰链 LQJ-FJ-08
Horizontal Cornering
Model LQJ-FJ-08



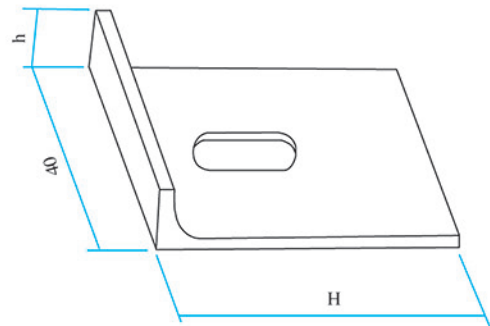
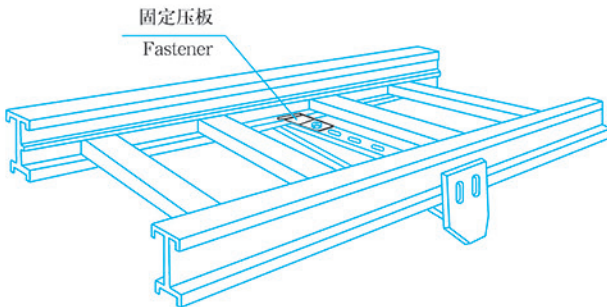
型号 Model	H	单价元/件 unit/price	备注 Remark
LQJ-FJ-08-60	47	20.20	4只连接孔 4 holes in connectors
LQJ-FJ-08-110	97	24.80	
LQJ-FJ-08-140	127	35.80	
LQJ-FJ-08-180	165	41.80	8只连接孔 8 holes in connectors
LQJ-FJ-08-200	185	63.20	

S型压板 LQJ-FJ-09
S-Clamp Model LQJ-FJ-09



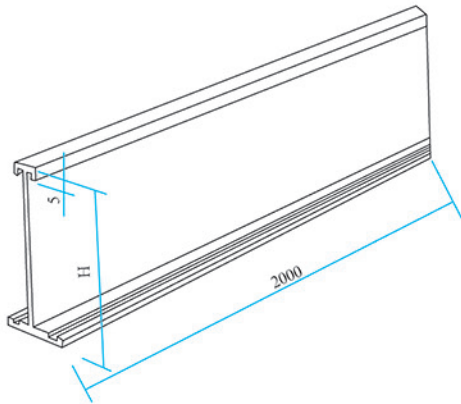
型号 Model	B	H	单价元/件 unit/price	备注 Remark
LQJ-FJ-09-60	27	59.5	8.10	4只连接孔 4 holes in connectors
LQJ-FJ-09-110		109.5	12.80	
LQJ-FJ-09-140		139.5	14.56	
LQJ-FJ-09-180	33	174.5	17.28	8只连接孔 8 holes in connectors
LQJ-FJ-05-200		199.5	18.72	

固定压板 LQJ-FJ-10
Fastener Model LQJ-FJ-10



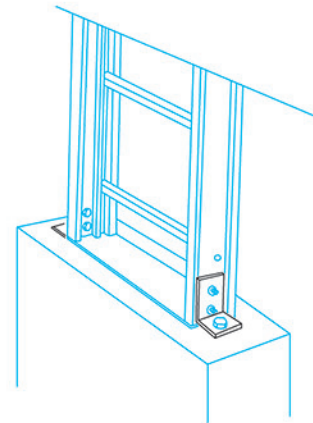
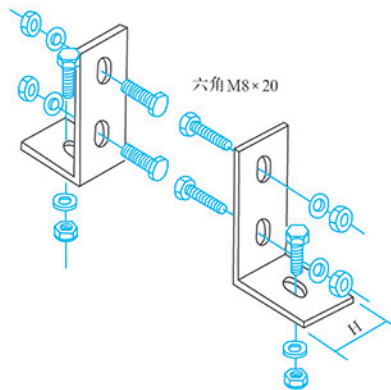
型号 Model	H	h	单价元/件 unit/price	备注 Remark
LQJ-FJ-10-1	43	14	4.8	用于60、110、140 for 60、110、140
LQJ-FJ-10-2	46	16	5.6	用于180、200、 for 180、200

隔离板 LQ-FJ-11
Separating plate Model LQ-FJ-11



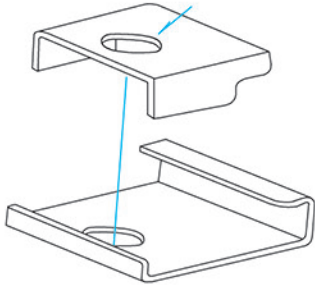
型号 Model	H	重量 (kg) Weight
LQ-FJ-11-60	37	1.62
LQ-FJ-11-110	87	2.67
LQ-FJ-11-140	117	3.30
LQ-FJ-11-180	157	4.20
LQ-FJ-11-200	177	4.58

支架 LQ-FJ-12
Holding-up frames Model LQ-FJ-12



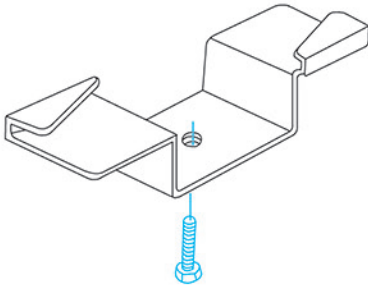
型号 Model	H	单价元/件 unit/price	备注 Remark
LQ-FJ-12-60	47	7.68	3只连接孔 3 holes in connectors
LQ-FJ-12-110	97	16.00	
LQ-FJ-12-140	127	20.80	
LQ-FJ-12-180	165	27.20	5只连接孔 5 holes in connectors
LQ-FJ-12-200	185	30.40	

悬吊器 LQJ-FJ-13
Suspending lustellation Model LQJ-FJ-13



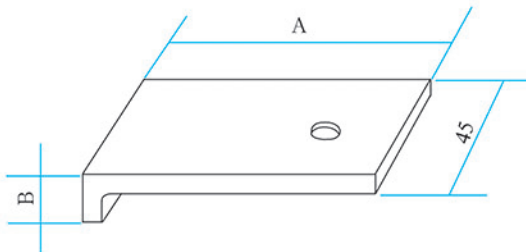
型号 Model	单价元 / 件 Unit Price	备注 Remark
LQJ-FJ-13-1	28.50	用于60、110、140 for 60、110、140
LQJ-FJ-13-2	31.60	用于180、200 for 180、200

凸型卡子 LQJ-FJ-18
Convex clip Model LQJ-FJ-18



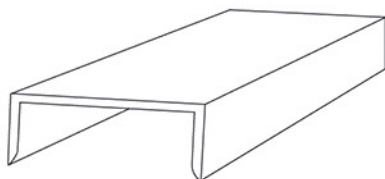
型号 Model	单价元 / 件 Unit Price	备注 Remark
LQJ-FJ-18-1	67.5	用于60、110、140 for 60、110、140
LQJ-FJ-18-2	68.3	用于180、200 for 180、200

绝缘垫 LQJ-FJ-19
Insulator Model LQJ-FJ-19



型号 Model	单价元 / 件 Unit Price	备注 Remark
LQJ-FJ-19-1	4.6	用于60、110、140 for 60、110、140
LQJ-FJ-19-2	5.2	用于180、200 for 180、200

绝缘垫 LQJ-FJ-20
Insulator Model LQJ-FJ-20



型号 Model	单价元 / 件 Unit Price	备注 Remark
LQJ-FJ-20-1	2.4	用于60、110、140 for 60、110、140
LQJ-FJ-20-2	2.8	用于180、200 for 180、200

防火电缆桥架 FQJ系列

FQJ系列电缆桥架有良好的绝热、防火、防腐和适用于广泛环境的性能，还具有重量轻、承载力大、安全可靠的特点，技术上达到了国内先进水平。

对于不同使用场合，FQJ系列防火槽盒可分为四部分：

1) 耐火型全封闭槽盒：该产品适用于10kV以下电力电缆，以及控制电缆、照明配线等室内室外架空电缆沟、隧道的敷设。

2) 耐火型半封闭槽盒：该产品能够经受火焰熏烤，槽内温度可以限制在电缆安全运行允许值内，盒盖为双层盖板。除了有防雨功能外，在遇高温时可自动下落，盖住散热孔，隔绝空气。

3) 电缆隧道用耐火槽盒：该产品可广泛用隧道、地下公共设施等场合。具有良好的通风透气性，当槽盒着火或电缆过热时，由于火焰作用使原来开启的浸有特种防火涂料的通风网孔堵塞，并膨胀成厚厚的碳屑包复电缆，网上小盖自动下落，盖住网面，使燃烧介质缺氧自熄。

4) 耐火型无机槽盒：该产品用无机材料与增强玻璃纤维构成，耐火结构为全封闭式，有效防止电缆自燃及外部火种的危害。另由于选用无机材料，特别适用于酸、碱腐蚀严重的场合。

FQJ series of Fireproof Cable Tray

The cable trays of FQJ series have good properties of thermal isolation, fireproofness, anti-corrosion and wide applicable environment. They also have the features of light weight, heavy load, reliable and safe. The technology has reached the advanced standard in China.

The fireproof box of FQJ series can be divided into four kinds according to different applications.

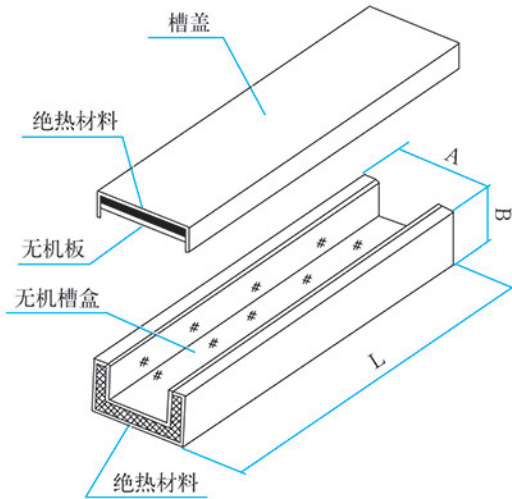
Fire resistant fully enclosed box: The product is suitable for laying power cables below 10kV, control cables, lightning wirings and other indoor and outdoor overhead cable trenches and tunnels.

Fire resistant semi-enclosed box: The product can withstand the flame. The temperature in the box can be limited within the allowable value of cable safe operation. In addition to the rainproof function, the cover with double plates can automatically fall down to cover the hole for heat dissipation and isolate the air in case of high temperature.

Fire resistant box for cable tunnel: With good ventilation and air permeability, the product is widely used in tunnels, underground public facilities and some other occasions. When the channel box is on fire or the cable is overheating, the flame will make the ventilation hole dipped with special fireproof material blocked and the special fireproof material will expand into a thick carbon bits to cover the cable, the small cover of the mesh falls down automatically to cover the mesh surface to make the combustion medium extinguished because absence of oxygen.

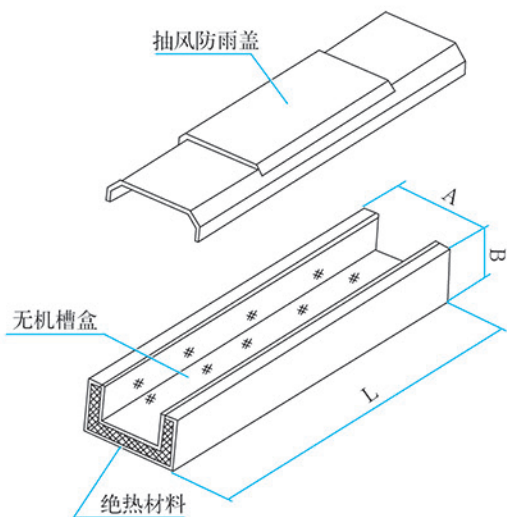
Fire resistant inorganic box: The product is made of inorganic material and reinforced glass fiber. The fireproof structure is fully enclosed one, which can effectively prevent the cable from spontaneous combustion and external fire hazard. In addition, the product is especially suitable for acid, alkali corrosion serious occasions because of the usage of the inorganic material.

耐火型全封闭槽盒 FQJ-01A



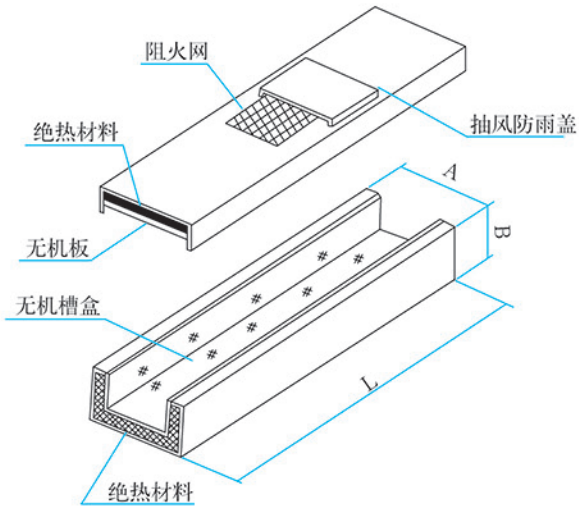
型 格 Model	外型尺寸		内截面 宽×高	
	槽宽	边高		
FQJ-01A-15a	150	100	100	60
FQJ-01A-20a	200	100	150	60
FQJ-01A-30a	300	100	250	60
FQJ-01A-40a	400	100	350	60
FQJ-01A-20b	200	150	150	110
FQJ-01A-30b	300	150	250	110
FQJ-01A-40b	400	150	350	110
FQJ-01A-50b	500	150	450	110
FQJ-01A-30c	300	200	250	160
FQJ-01A-40c	400	200	350	160
FQJ-01A-50c	500	200	450	160
FQJ-01A-60c	600	200	550	160
FQJ-01A-40d	400	250	350	210
FQJ-01A-50d	500	250	450	210
FQJ-01A-60d	600	250	550	210
FQJ-01A-80d	800	250	750	210
FQJ-01A-50e	500	300	450	260
FQJ-01A-60e	600	300	550	260

耐火型半封闭槽盒 FQJ-01B



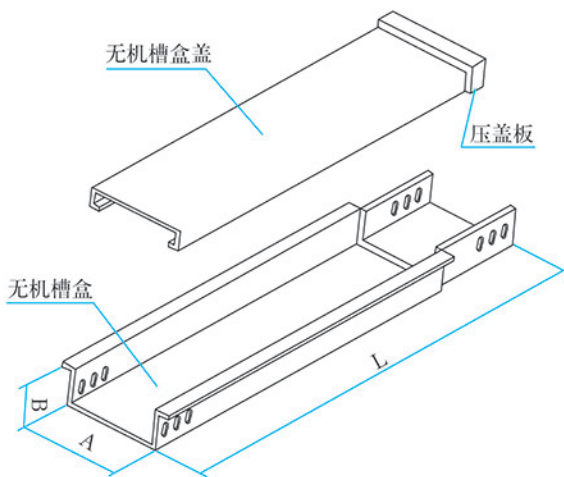
型 格 Model	外型尺寸		内截面 宽×高	
	槽宽	边高		
FQJ-01B-15a	150	100	100	60
FQJ-01B-20a	200	100	150	60
FQJ-01B-30a	300	100	250	60
FQJ-01B-40a	400	100	350	60
FQJ-01B-20b	200	150	150	110
FQJ-01B-30b	300	150	250	110
FQJ-01B-40b	400	150	350	110
FQJ-01B-50b	500	150	450	110
FQJ-01B-30c	300	200	250	160
FQJ-01B-40c	400	200	350	160
FQJ-01B-50c	500	200	450	160
FQJ-01B-60c	600	200	550	160
FQJ-01B-40d	400	250	350	210
FQJ-01B-50d	500	250	450	210
FQJ-01B-60d	600	250	550	210
FQJ-01B-80d	800	250	7x50	210
FQJ-01B-50e	500	300	450	260
FQJ-01B-60e	600	300	550	260

电缆隧道用耐火槽盒 FQJ-01C



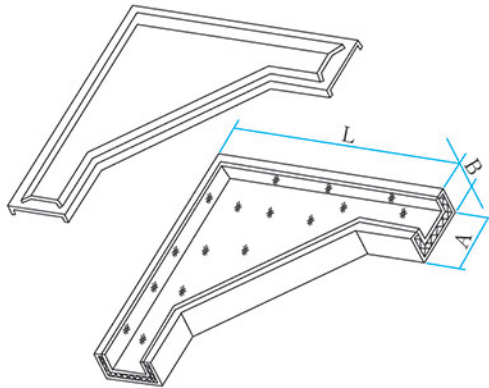
型 格 Model	外型尺寸		内截面 宽×高	
	槽宽	边高		
FQJ-01C-15a	150	100	100	60
FQJ-01C-20a	200	100	150	60
FQJ-01C-30a	300	100	250	60
FQJ-01C-40a	400	100	350	60
FQJ-01C-20b	200	150	150	110
FQJ-01C-30b	300	150	250	110
FQJ-01C-40b	400	150	350	110
FQJ-01C-50b	500	150	450	110
FQJ-01C-30c	300	200	250	160
FQJ-01C-40c	400	200	350	160
FQJ-01C-50c	500	200	450	160
FQJ-01C-60c	600	200	550	160
FQJ-01C-40d	400	250	350	210
FQJ-01C-50d	500	250	450	210
FQJ-01C-60d	600	250	550	210
FQJ-01C-80d	800	250	750	210
FQJ-01C-50e	500	300	450	260
FQJ-01C-60e	600	300	550	260

耐火型无机槽盒 FQJ-01D



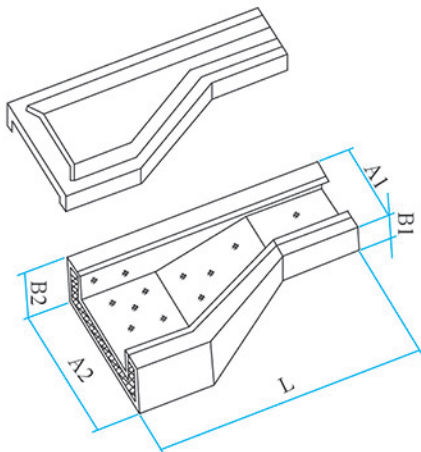
型 格 Model	外型尺寸		内截面 宽×高	
	槽宽	边高		
FQJ-01D-15a	150	100	130	80
FQJ-01D-20a	200	100	180	80
FQJ-01D-30a	300	100	180	80
FQJ-01D-40a	400	100	380	80
FQJ-01D-20b	200	150	180	130
FQJ-01D-30b	300	150	280	130
FQJ-01D-40b	400	150	380	130
FQJ-01D-50b	500	150	480	130
FQJ-01D-30c	300	200	280	180
FQJ-01D-40c	400	200	380	180
FQJ-01D-50c	500	200	480	180
FQJ-01D-60c	600	200	580	180
FQJ-01D-40d	400	250	380	230
FQJ-01D-50d	500	250	480	230
FQJ-01D-60d	600	250	580	230
FQJ-01D-80d	800	250	780	230
FQJ-01D-50e	500	300	480	280
FQJ-01D-60e	600	300	580	280

水平弯通 FQJ-PW-02A



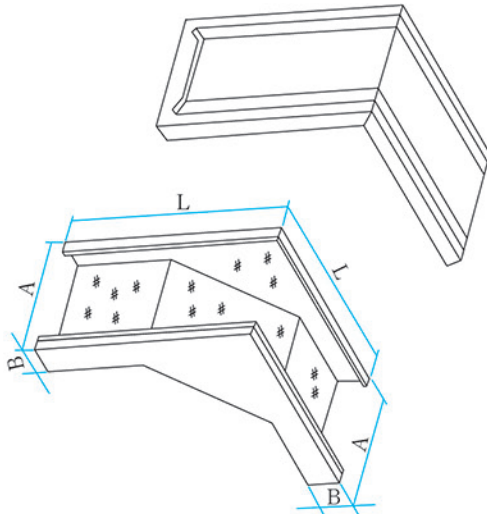
型 格 Model	外型尺寸			内截面 宽×高	
	槽宽	边高	L1		
FQJ-PW-02A-15a	150	100	450	100	60
FQJ-PW-02A-20a	200	100	500	150	60
FQJ-PW-02A-30a	300	100	600	250	60
FQJ-PW-02A-40a	400	100	700	350	60
FQJ-PW-02A-20b	200	150	500	150	110
FQJ-PW-02A-30b	300	150	600	250	110
FQJ-PW-02A-40b	400	150	700	350	110
FQJ-PW-02A-50b	500	150	800	450	110
FQJ-PW-02A-30c	300	200	600	250	160
FQJ-PW-02A-40c	400	200	700	350	160
FQJ-PW-02A-50c	500	200	800	450	160
FQJ-PW-02A-60c	600	200	900	550	160
FQJ-PW-02A-40d	400	250	700	350	210
FQJ-PW-02A-50d	500	250	800	450	210
FQJ-PW-02A-60d	600	250	900	550	210
FQJ-PW-02A-80d	800	250	1100	750	210
FQJ-PW-02A-50e	500	300	800	450	260
FQJ-PW-02A-60e	600	300	900	550	260

变径直通 FQJ-BJ-02A



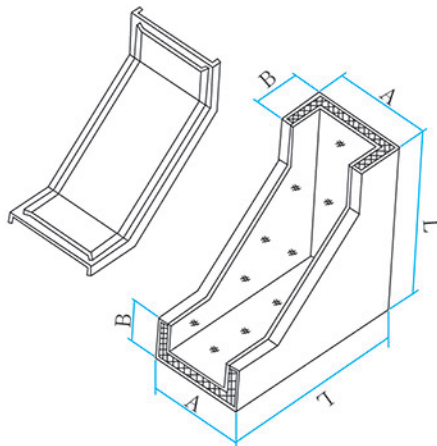
型 格 Model	外型尺寸			内截面	
	A1×B1	A2×B2	L	a1×b1	a2×b2
FQJ-BJ-02A-20a-1	200×100	300×150	400	150×60	250×110
FQJ-BJ-02A-20a-2	200×100	400×200	500	150×60	350×160
FQJ-BJ-02A-20a-3	200×100	500×200	600	150×60	450×160
FQJ-BJ-02A-20a-4	200×100	600×200	700	150×60	550×160
FQJ-BJ-02A-30b-1	300×150	400×200	500	250×110	350×160
FQJ-BJ-02A-30b-2	300×150	500×200	600	250×110	450×160
FQJ-BJ-02A-30b-3	300×150	600×200	700	250×110	550×160
FQJ-BJ-02A-30b-4	300×150	800×200	900	250×110	750×160
FQJ-BJ-02A-40c-1	400×200	500×200	500	350×160	450×160
FQJ-BJ-02A-40c-2	400×200	600×200	600	350×160	550×160
FQJ-BJ-02A-40c-3	400×200	800×200	800	350×160	750×160
FQJ-BJ-02A-50d-1	500×200	600×200	500	450×160	550×160
FQJ-BJ-02A-50d-2	500×200	800×200	700	450×160	750×160
FQJ-BJ-02A-60e-1	600×200	800×200	600	550×160	750×160

垂直上弯通 FQJ-SW-02A



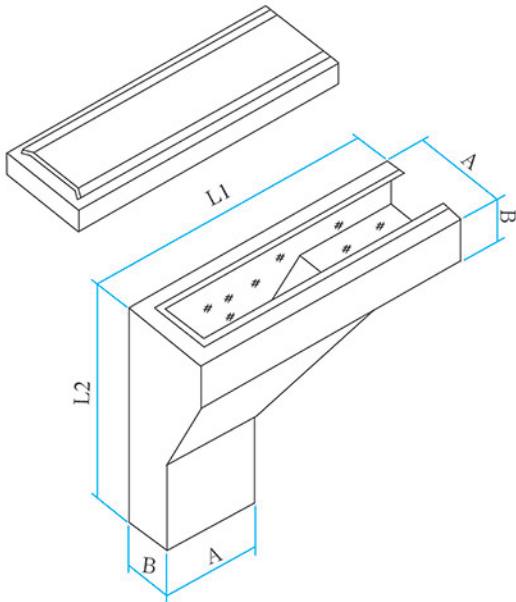
型 格 Model	外型尺寸			内截面 宽×高	
	槽宽	边高	L		
FQJ-SW-02A-15a	150	100	400	100	60
FQJ-SW-02A-20a	200	100	400	150	60
FQJ-SW-02A-30a	300	100	400	250	60
FQJ-SW-02A-40a	400	100	400	350	60
FQJ-SW-02A-20b	200	150	450	150	110
FQJ-SW-02A-30b	300	150	450	250	110
FQJ-SW-02A-40b	400	150	450	350	110
FQJ-SW-02A-50b	500	150	450	450	110
FQJ-SW-02A-30c	300	200	500	250	160
FQJ-SW-02A-40c	400	200	500	350	160
FQJ-SW-02A-50c	500	200	500	450	160
FQJ-SW-02A-60c	600	200	500	550	160
FQJ-SW-02A-40d	400	250	550	350	210
FQJ-SW-02A-50d	500	250	550	450	210
FQJ-SW-02A-60d	600	250	550	550	210
FQJ-SW-02A-80d	800	250	550	750	210
FQJ-SW-02A-50e	500	300	600	450	260
FQJ-SW-02A-60e	600	300	600	550	260

垂直下弯通 FQJ-XW-02B



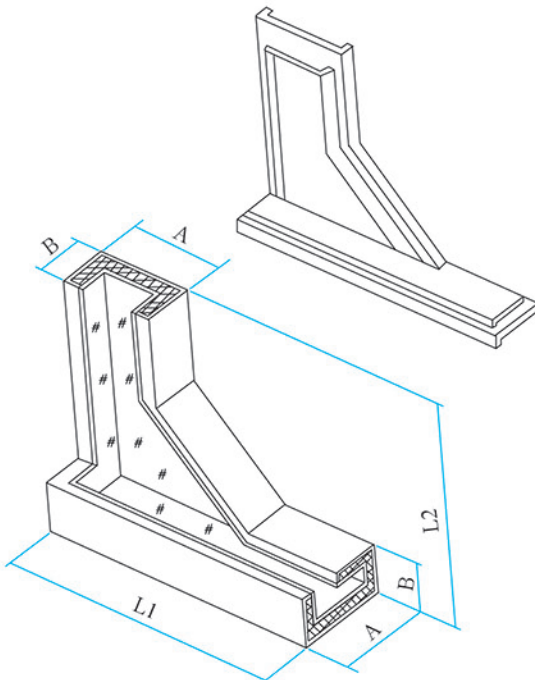
型 格 Model	外型尺寸			内截面 宽×高	
	槽宽	边高	L		
FQJ-XW-02B-15a	150	100	400	100	60
FQJ-XW-02B-20a	200	100	400	150	60
FQJ-XW-02B-30a	300	100	400	250	60
FQJ-XW-02B-40a	400	100	400	350	60
FQJ-XW-02B-20b	200	150	450	150	110
FQJ-XW-02B-30b	300	150	450	250	110
FQJ-XW-02B-40b	400	150	450	350	110
FQJ-XW-02B-50b	500	150	450	450	110
FQJ-XW-02B-30c	300	200	500	250	160
FQJ-XW-02B-40c	400	200	500	350	160
FQJ-XW-02B-50c	500	200	500	450	160
FQJ-XW-02B-60c	600	200	500	550	160
FQJ-XW-02B-40d	400	250	550	350	210
FQJ-XW-02B-50d	500	250	550	450	210
FQJ-XW-02B-60d	600	250	550	550	210
FQJ-XW-02B-80d	800	250	550	750	210
FQJ-XW-02B-50e	500	300	600	450	260
FQJ-XW-02B-60e	600	300	600	550	260

垂直左上弯通 FQJ-SW-02C



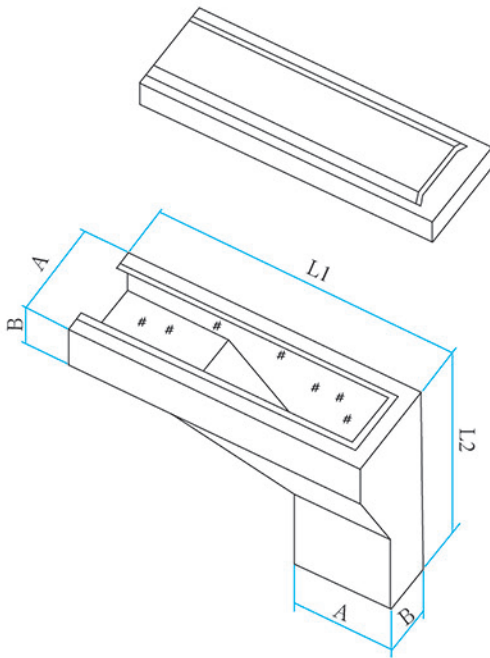
型 格 Model	外型尺寸				内截面 宽×高	
	槽宽	边高	L1	L2		
FQJ-SW-02C-15a	150	100	450	400	100	60
FQJ-SW-02C-20a	200	100	500	400	150	60
FQJ-SW-02C-30a	300	100	600	400	250	60
FQJ-SW-02C-40a	400	100	700	400	350	60
FQJ-SW-02C-20b	200	150	500	450	150	110
FQJ-SW-02C-30b	300	150	600	450	250	110
FQJ-SW-02C-40b	400	150	700	450	350	110
FQJ-SW-02C-50b	500	150	800	450	450	110
FQJ-SW-02C-30c	300	200	600	500	250	160
FQJ-SW-02C-40c	400	200	700	500	350	160
FQJ-SW-02C-50c	500	200	800	500	450	160
FQJ-SW-02C-60c	600	200	900	500	550	160
FQJ-SW-02C-40d	400	250	700	550	350	210
FQJ-SW-02C-50d	500	250	800	550	450	210
FQJ-SW-02C-60d	600	250	900	550	550	210
FQJ-SW-02C-80d	800	250	1100	550	750	210
FQJ-SW-02C-50e	500	300	800	600	450	260
FQJ-SW-02C-60e	600	300	900	600	550	260

垂直左下弯通 FQJ-XW-02D



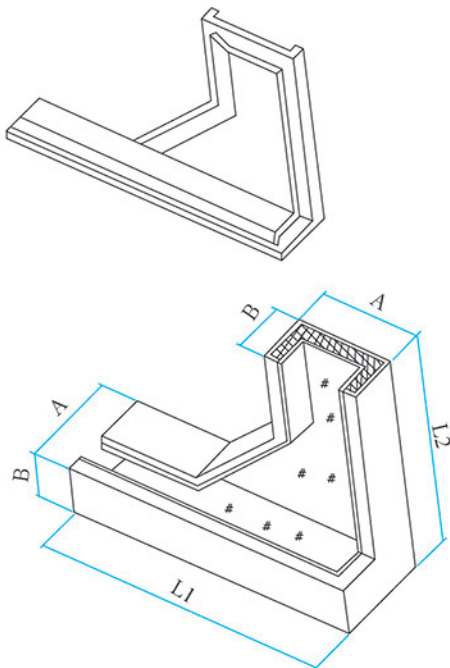
型 格 Model	外型尺寸				内截面 宽×高	
	槽宽	边高	L1	L2		
FQJ-XW-02D-15a	150	100	450	400	100	60
FQJ-XW-02D-20a	200	100	500	400	150	60
FQJ-XW-02D-30a	300	100	600	400	250	60
FQJ-XW-02D-40a	400	100	700	400	350	60
FQJ-XW-02D-20b	200	150	500	450	150	110
FQJ-XW-02D-30b	300	150	600	450	250	110
FQJ-XW-02D-40b	400	150	700	450	350	110
FQJ-XW-02D-50b	500	150	800	450	450	110
FQJ-XW-02D-30c	300	200	600	500	250	160
FQJ-XW-02D-40c	400	200	700	500	350	160
FQJ-XW-02D-50c	500	200	800	500	450	160
FQJ-XW-02D-60c	600	200	900	500	550	160
FQJ-XW-02D-40d	400	250	700	550	350	210
FQJ-XW-02D-50d	500	250	800	550	450	210
FQJ-XW-02D-60d	600	250	900	550	550	210
FQJ-XW-02D-80d	800	250	1100	550	750	210
FQJ-XW-02D-50e	500	300	800	600	450	260
FQJ-XW-02D-60e	600	300	900	600	550	260

垂直右上弯通 FQJ-SW-02E



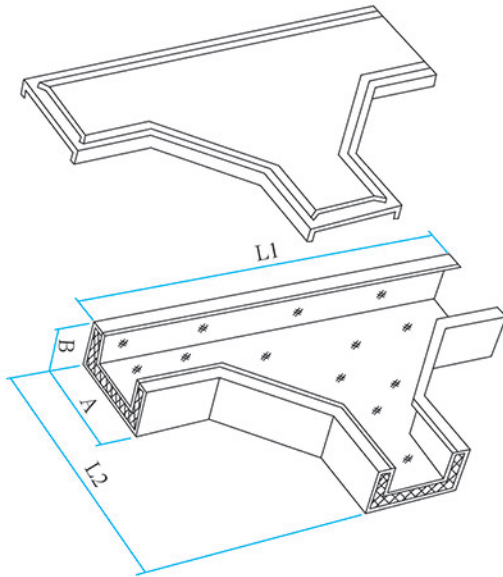
型 格 Model	外型尺寸				内截面 宽×高	
	槽宽	边高	L1	L2		
FQJ-SW-02E-15a	150	100	450	400	100	60
FQJ-SW-02E-20a	200	100	500	400	150	60
FQJ-SW-02E-30a	300	100	600	400	250	60
FQJ-SW-02E-40a	400	100	700	400	350	60
FQJ-SW-02E-20b	200	150	500	450	150	110
FQJ-SW-02E-30b	300	150	600	450	250	110
FQJ-SW-02E-40b	400	150	700	450	350	110
FQJ-SW-02E-50b	500	150	800	450	450	110
FQJ-SW-02E-30c	300	200	600	500	250	160
FQJ-SW-02E-40c	400	200	700	500	350	160
FQJ-SW-02E-50c	500	200	800	500	450	160
FQJ-SW-02E-60c	600	200	900	500	550	160
FQJ-SW-02E-40d	400	250	700	550	350	210
FQJ-SW-02E-50d	500	250	800	550	450	210
FQJ-SW-02E-60d	600	250	900	550	550	210
FQJ-SW-02E-80d	800	250	1100	550	750	210
FQJ-SW-02E-50e	500	300	800	600	450	260
FQJ-SW-02E-60e	600	300	900	600	550	260

垂直右下弯通 FQJ-XW-02F



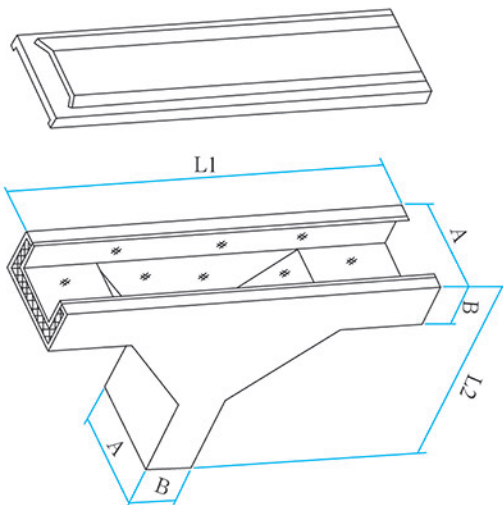
型 格 Model	外型尺寸				内截面 宽×高	
	槽宽	边高	L1	L2		
FQJ-XW-02F-15a	150	100	450	400	100	60
FQJ-XW-02F-20a	200	100	500	400	150	60
FQJ-XW-02F-30a	300	100	600	400	250	60
FQJ-XW-02F-40a	400	100	700	400	350	60
FQJ-XW-02F-20b	200	150	500	450	150	110
FQJ-XW-02F-30b	300	150	600	450	250	110
FQJ-XW-02F-40b	400	150	700	450	350	110
FQJ-XW-02F-50b	500	150	800	450	450	110
FQJ-XW-02F-30c	300	200	600	500	250	160
FQJ-XW-02F-40c	400	200	700	500	350	160
FQJ-XW-02F-50c	500	200	800	500	450	160
FQJ-XW-02F-60c	600	200	900	500	550	160
FQJ-XW-02F-40d	400	250	700	550	350	210
FQJ-XW-02F-50d	500	250	800	550	450	210
FQJ-XW-02F-60d	600	250	900	550	550	210
FQJ-XW-02F-80d	800	250	1100	550	750	210
FQJ-XW-02F-50e	500	300	800	600	450	260
FQJ-XW-02F-60e	600	300	900	600	550	260

水平三通 FQJ-ST-03A



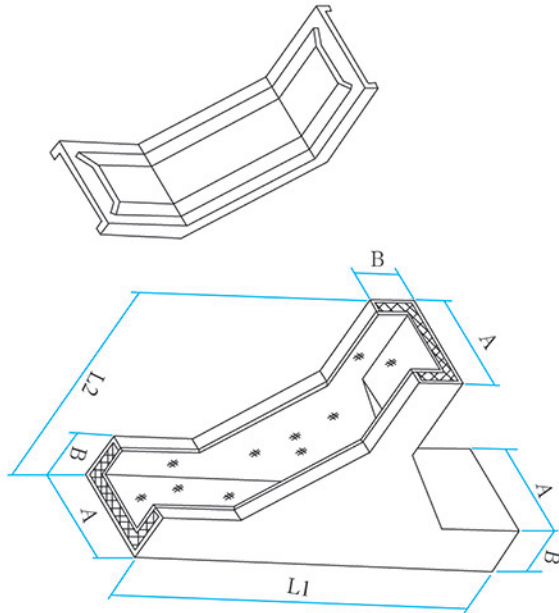
型 格 Model	外型尺寸				内截面 宽×高	
	槽宽	边高	L1	L2		
FQJ-ST-03A-15a	150	100	750	450	100	60
FQJ-ST-03A-20a	200	100	800	500	150	60
FQJ-ST-03A-30a	300	100	900	600	250	60
FQJ-ST-03A-40a	400	100	1000	700	350	60
FQJ-ST-03A-20b	200	150	800	500	150	110
FQJ-ST-03A-30b	300	150	900	600	250	110
FQJ-ST-03A-40b	400	150	1000	700	350	110
FQJ-ST-03A-50b	500	150	1100	800	450	110
FQJ-ST-03A-30c	300	200	900	600	250	160
FQJ-ST-03A-40c	400	200	1000	700	350	160
FQJ-ST-03A-50c	500	200	1100	800	450	160
FQJ-ST-03A-60c	600	200	1200	900	550	160
FQJ-ST-03A-40d	400	250	1000	700	350	210
FQJ-ST-03A-50d	500	250	1100	800	450	210
FQJ-ST-03A-60d	600	250	1200	900	550	210
FQJ-ST-03A-80d	800	250	1400	1100	750	210
FQJ-ST-03A-50e	500	300	1100	800	450	260
FQJ-ST-03A-60e	600	300	1200	900	550	260

上垂直三通 FQJ-SS-03B



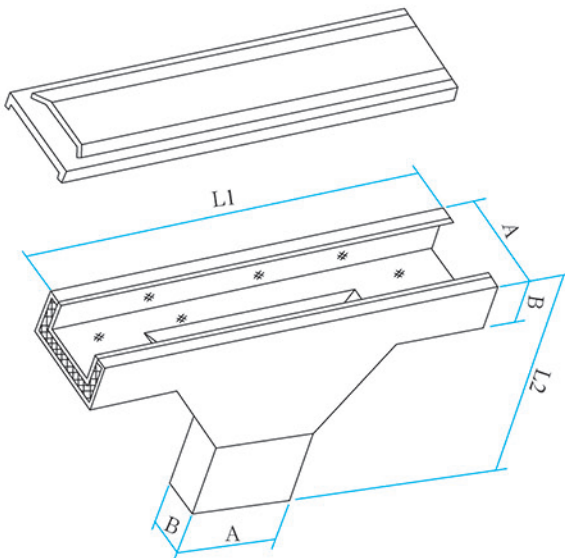
型 格 Model	外型尺寸				内截面 宽×高	
	槽宽	边高	L1	L2		
FQJ-SS-03B-15a	150	100	700	400	100	60
FQJ-SS-03B-20a	200	100	700	400	150	60
FQJ-SS-03B-30a	300	100	700	400	250	60
FQJ-SS-03B-40a	400	100	700	400	350	60
FQJ-SS-03B-20b	200	150	750	450	150	110
FQJ-SS-03B-30b	300	150	750	450	250	110
FQJ-SS-03B-40b	400	150	750	450	350	110
FQJ-SS-03B-50b	500	150	750	450	450	110
FQJ-SS-03B-30c	300	200	800	500	250	160
FQJ-SS-03B-40c	400	200	800	500	350	160
FQJ-SS-03B-50c	500	200	800	500	450	160
FQJ-SS-03B-60c	600	200	800	500	550	160
FQJ-SS-03B-40d	400	250	850	550	350	210
FQJ-SS-03B-50d	500	250	850	550	450	210
FQJ-SS-03B-60d	600	250	850	550	550	210
FQJ-SS-03B-80d	800	250	850	550	750	210
FQJ-SS-03B-50e	500	300	900	600	450	260
FQJ-SS-03B-60e	600	300	900	600	550	260

下垂直三通 FQJ-XS-03C



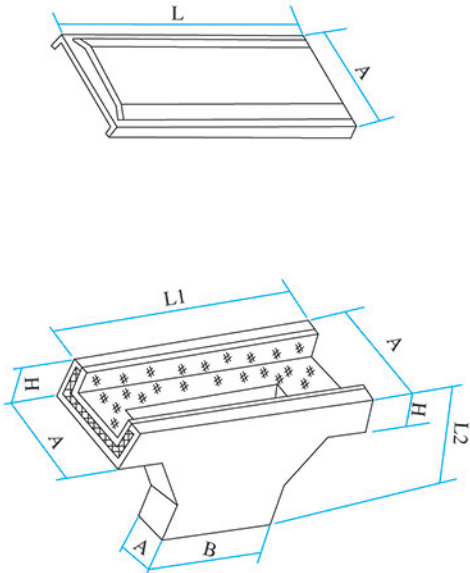
型 格 Model	外型尺寸				内截面 宽×高	
	槽宽	边高	L1	L2		
FQJ-XS-03C-15a	150	100	700	400	100	60
FQJ-XS-03C-20a	200	100	700	400	150	60
FQJ-XS-03C-30a	300	100	700	400	250	60
FQJ-XS-03C-40a	400	100	700	400	350	60
FQJ-XS-03C-20b	200	150	750	450	150	110
FQJ-XS-03C-30b	300	150	750	450	250	110
FQJ-XS-03C-40b	400	150	750	450	350	110
FQJ-XS-03C-50b	500	150	750	450	450	110
FQJ-XS-03C-30c	300	200	800	500	250	160
FQJ-XS-03C-40c	400	200	800	500	350	160
FQJ-XS-03C-50c	500	200	800	500	450	160
FQJ-XS-03C-60c	600	200	800	500	550	160
FQJ-XS-03C-40d	400	250	850	550	350	210
FQJ-XS-03C-50d	500	250	850	550	450	210
FQJ-XS-03C-60d	600	250	850	550	550	210
FQJ-XS-03C-80d	800	250	850	550	750	210
FQJ-XS-03C-50e	500	300	900	600	450	260
FQJ-XS-03C-60e	600	300	900	600	550	260

上边垂直三通 FQJ-SS-03D



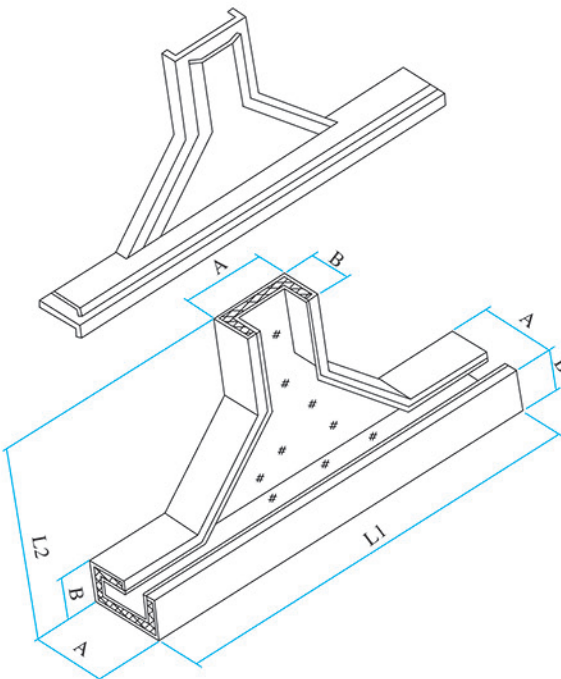
型 格 Model	外型尺寸				内截面 宽×高	
	槽宽	边高	L1	L2		
FQJ-SS-03D-15a	150	100	750	400	100	60
FQJ-SS-03D-20a	200	100	800	400	150	60
FQJ-SS-03D-30a	300	100	900	400	250	60
FQJ-SS-03D-40a	400	100	1000	400	350	60
FQJ-SS-03D-20b	200	150	800	450	150	110
FQJ-SS-03D-30b	300	150	900	450	250	110
FQJ-SS-03D-40b	400	150	1000	450	350	110
FQJ-SS-03D-50b	500	150	1100	450	450	110
FQJ-SS-03D-30c	300	200	900	500	250	160
FQJ-SS-03D-40c	400	200	1000	500	350	160
FQJ-SS-03D-50c	500	200	1100	500	450	160
FQJ-SS-03D-60c	600	200	1200	500	550	160
FQJ-SS-03D-40d	400	250	1000	550	350	210
FQJ-SS-03D-50d	500	250	1100	550	450	210
FQJ-SS-03D-60d	600	250	1200	550	550	210
FQJ-SS-03D-80d	800	250	1400	550	750	210
FQJ-SS-03D-50e	500	300	1100	600	450	260
FQJ-SS-03D-60e	600	300	1200	600	550	260

上边垂直三通 FQJ-XS-03D



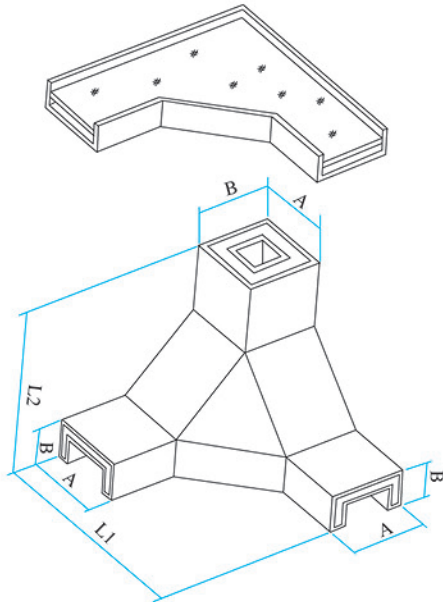
型 格 Model	外型尺寸				内截面 宽×高	
	槽宽	边高	L1	L2		
FQJ-XS-03D-15a	150	100	750	400	100	60
FQJ-XS-03D-20a	200	100	800	400	150	60
FQJ-XS-03D-30a	300	100	900	400	250	60
FQJ-XS-03D-40a	400	100	1000	400	350	60
FQJ-XS-03D-20b	200	150	800	450	150	110
FQJ-XS-03D-30b	300	150	900	450	250	110
FQJ-XS-03D-40b	400	150	1000	450	350	110
FQJ-XS-03D-50b	500	150	1100	450	450	110
FQJ-XS-03D-30c	300	200	900	500	250	160
FQJ-XS-03D-40c	400	200	1000	500	350	160
FQJ-XS-03D-50c	500	200	1100	500	450	160
FQJ-XS-03D-60c	600	200	1200	500	550	160
FQJ-XS-03D-40d	400	250	1000	550	350	210
FQJ-XS-03D-50d	500	250	1100	550	450	210
FQJ-XS-03D-60d	600	250	1200	550	550	210
FQJ-XS-03D-80d	800	250	1400	550	750	210
FQJ-XS-03D-50e	500	300	1100	600	450	260
FQJ-XS-03D-60e	600	300	1200	600	550	260

下边垂直三通 FQJ-XS-03E



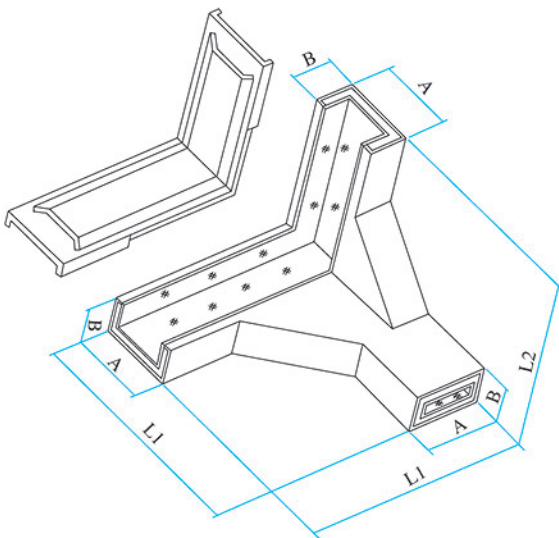
型 格 Model	外型尺寸				内截面 宽×高	
	槽宽	边高	L1	L2		
FQJ-XS-03E-15a	150	100	750	400	100	60
FQJ-XS-03E-20a	200	100	800	400	150	60
FQJ-XS-03E-30a	300	100	900	400	250	60
FQJ-XS-03E-40a	400	100	1000	400	350	60
FQJ-XS-03E-20b	200	150	800	450	150	110
FQJ-XS-03E-30b	300	150	900	450	250	110
FQJ-XS-03E-40b	400	150	1000	450	350	110
FQJ-XS-03E-50b	500	150	1100	450	450	110
FQJ-XS-03E-30c	300	200	900	500	250	160
FQJ-XS-03E-40c	400	200	1000	500	350	160
FQJ-XS-03E-50c	500	200	1100	500	450	160
FQJ-XS-03E-60c	600	200	1200	500	550	160
FQJ-XS-03E-40d	400	250	1000	550	350	210
FQJ-XS-03E-50d	500	250	1100	550	450	210
FQJ-XS-03E-60d	600	250	1200	550	550	210
FQJ-XS-03E-80d	800	250	1400	550	750	210
FQJ-XS-03E-50e	500	300	1100	600	450	260
FQJ-XS-03E-60e	600	300	1200	600	550	260

上角垂直三通 FQJ-SS-03F



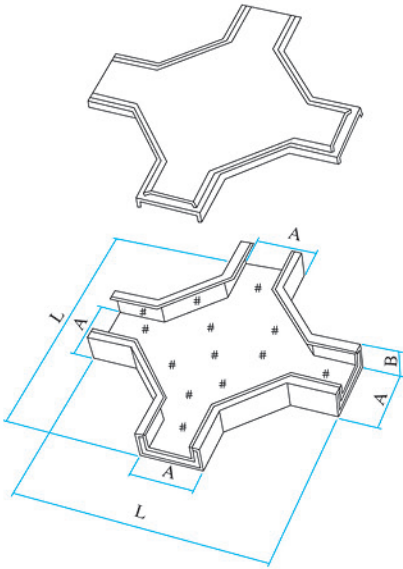
型 格 Model	外型尺寸				内截面 宽×高	
	槽宽	边高	L1	L2		
FQJ-SS-03F-15a	150	100	450	400	100	60
FQJ-SS-03F-20a	200	100	500	400	150	60
FQJ-SS-03F-30a	300	100	600	400	250	60
FQJ-SS-03F-40a	400	100	700	400	350	60
FQJ-SS-03F-20b	200	150	500	450	150	110
FQJ-SS-03F-30b	300	150	600	450	250	110
FQJ-SS-03F-40b	400	150	700	450	350	110
FQJ-SS-03F-50b	500	150	800	450	450	110
FQJ-SS-03F-30c	300	200	600	500	250	160
FQJ-SS-03F-40c	400	200	700	500	350	160
FQJ-SS-03F-50c	500	200	800	500	450	160
FQJ-SS-03F-60c	600	200	900	500	550	160
FQJ-SS-03F-40d	400	250	700	550	350	210
FQJ-SS-03F-50d	500	250	800	550	450	210
FQJ-SS-03F-60d	600	250	900	550	550	210
FQJ-SS-03F-80d	800	250	1100	550	750	210
FQJ-SS-03F-50e	500	300	800	600	450	260
FQJ-SS-03F-60e	600	300	900	600	550	260

下角垂直三通 FQJ-XS-03G



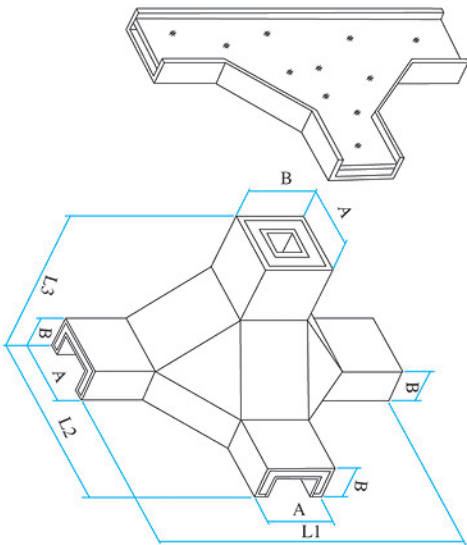
型 格 Model	外型尺寸				内截面 宽×高	
	槽宽	边高	L1	L2		
FQJ-XS-03G-15a	150	100	450	400	100	60
FQJ-XS-03G-20a	200	100	500	400	150	60
FQJ-XS-03G-30a	300	100	600	400	250	60
FQJ-XS-03G-40a	400	100	700	400	350	60
FQJ-XS-03G-20b	200	150	500	450	150	110
FQJ-XS-03G-30b	300	150	600	450	250	110
FQJ-XS-03G-40b	400	150	700	450	350	110
FQJ-XS-03G-50b	500	150	800	450	450	110
FQJ-XS-03G-30c	300	200	600	500	250	160
FQJ-XS-03G-40c	400	200	700	500	350	160
FQJ-XS-03G-50c	500	200	800	500	450	160
FQJ-XS-03G-60c	600	200	900	500	550	160
FQJ-XS-03G-40d	400	250	700	550	350	210
FQJ-XS-03G-50d	500	250	800	550	450	210
FQJ-XS-03G-60d	600	250	900	550	550	210
FQJ-XS-03G-80d	800	250	1100	550	750	210
FQJ-XS-03G-50e	500	300	800	600	450	260
FQJ-XS-03G-60e	600	300	900	600	550	260

水平四通 FQJ-PS-04A



型 格 Model	外型尺寸			内截面 宽×高	
	槽宽	边高	L1		
FQJ-PS-04A-15a	150	100	750	100	60
FQJ-PS-04A-20a	200	100	800	150	60
FQJ-PS-04A-30a	300	100	900	250	60
FQJ-PS-04A-40a	400	100	1000	350	60
FQJ-PS-04A-20b	200	150	800	150	110
FQJ-PS-04A-30b	300	150	900	250	110
FQJ-PS-04A-40b	400	150	1000	350	110
FQJ-PS-04A-50b	500	150	1100	450	110
FQJ-PS-04A-30c	300	200	900	250	160
FQJ-PS-04A-40c	400	200	1000	350	160
FQJ-PS-04A-50c	500	200	1100	450	160
FQJ-PS-04A-60c	600	200	1200	550	160
FQJ-PS-04A-40d	400	250	1000	350	210
FQJ-PS-04A-50d	500	250	1100	450	210
FQJ-PS-04A-60d	600	250	1200	550	210
FQJ-PS-04A-80d	800	250	1400	750	210
FQJ-PS-04A-50e	500	300	1100	450	260
FQJ-PS-04A-60e	600	300	1200	550	260

上垂直四通 FQJ-SS-04B



型 格 Model	外型尺寸					内截面 宽×高	
	槽宽	边高	L1	L2	L3		
FQJ-SS-04B-15a	150	100	750	325	250	100	60
FQJ-SS-04B-20a	200	100	800	400	300	150	60
FQJ-SS-04B-30a	300	100	900	550	400	250	60
FQJ-SS-04B-40a	400	100	1000	700	500	350	60
FQJ-SS-04B-20b	200	150	800	400	300	150	110
FQJ-SS-04B-30b	300	150	900	550	400	250	110
FQJ-SS-04B-40b	400	150	1000	700	500	350	110
FQJ-SS-04B-50b	500	150	1100	800	500	450	110
FQJ-SS-04B-30c	300	200	900	550	400	250	160
FQJ-SS-04B-40c	400	200	1000	700	500	350	160
FQJ-SS-04B-50c	500	200	1100	800	500	450	160
FQJ-SS-04B-60c	600	200	1200	900	500	550	160
FQJ-SS-04B-40d	400	250	1000	700	500	350	210
FQJ-SS-04B-50d	500	250	1100	800	500	450	210
FQJ-SS-04B-60d	600	250	1200	900	500	550	210
FQJ-SS-04B-80d	800	250	1400	1100	500	750	210
FQJ-SS-04B-50e	500	300	1100	800	500	450	260
FQJ-SS-04B-60e	600	300	1200	900	500	550	260

■ 专利桥架 Patent Cable Tray

快速安装、一锤定音

采用世界上最先进的无螺栓连接技术，快速插接，安装极为方便，仅为螺栓连接的20%的时间。

模式组合、节省材料

模压成型的桥架每150mm模压出一个梯节，且每50mm模压出一个连接孔，任意切断都可组合，每一梯节可利用，不产生下角料。

超薄超轻、承载力大

模压成型的凹凸表面光滑，形成加强筋，在减少板材厚度，降低电缆桥架自重的同时，承载力依然大大强于普通桥架，却比普通桥架低至三倍。

表面光滑、易拖电缆

模压成型的凹凸表面光滑，形成一排小滚轮，电缆在里面极易拖动，且不损伤电缆表面。

三维空间，柔性连接

模压成型的模块式桥架与无螺栓连接头形成完美组合，可在三维立体空间中进行任意角度的柔性连接组合，不需任何专用弯头，可以随意绕过电气、通风水暖道及建筑物障碍。

通风散热、不存积水

电缆在桥架内不通风散热，会大大加速电缆表层的氧化，良好的通风散热，提高了电缆的使用寿命，且不存积水。

Fast installation

The most advanced bolt-free connection technology in the world is adopted. The insertion is fast and the installation is extremely convenient. The installation time is only 20% of that of bolted connection.

Pattern combination, material saving

A ladder section is made every 150mm and a connecting hole is made every 50mm of molded cable tray. Any cutting can be combined and every ladder section can be used without scrap material.

Ultrathin, ultra light and strong carrying capacity

The molded concave and convex surface is smooth, forming stiffeners. While reducing the thickness of the plate and the weight of the cable tray, the carrying capacity is still much stronger than that of the ordinary cable tray, but the weight is lower than the ordinary cable tray by three times.

Smooth surface ,easy to pull cables

The molded concave and convex surface is smooth, forming a row of small rollers. It is very easy to drag the cable inside and there is no damage to the cable surface.

Three-dimensional space, flexible connection

The molded modular cable tray and bolt-free joint forms a perfect combination ,which can be flexibly connected and combined at any angle in the three-dimensional space without any special elbow and can bypass electric, ventilation plumbing and building obstacles at will.

Ventilation, heat dissipation and no water accumulation

No ventilation or heat dissipation in the cable tray greatly accelerates the oxidation of the cable surface. Good ventilation and heat dissipation improve the service life of the cable and there is no water accumulation.

■ 传统桥架 Traditional Cable Tray

每个接头都需要螺栓、螺母旋紧，一个接头少则8个，多则12-16个，安装极为麻烦。

线槽托盘在安装时，长度变化锯下部分便成为下角料，且需再次加工连接孔。

传统桥架为保证承载力，板材很厚，桥架自身很重，且承载力相对较低。

电缆在普通桥架内是面接触，摩擦力大，不易拖动。

每一个小小的三维空间角度的变化，便需要一个专用弯头为其设计制造，设计安装极为复杂。

电缆在密封的电缆桥架内产生热量的堆积，加快了电缆表层的老化。一旦积水，不易排出。

Every joint needs 8 pieces of bolts and nuts at least and 12-16 pieces of bolts and nuts at most for tightening. It is troublesome to install.

During the installation of cable tray, the cut-off part because of length change will become scrap material and the connection hole needs to be made again.

In order to ensure the carrying capacity, the plate of the traditional cable tray is very thick and the cable tray is very heavy but the carrying capacity is relatively low.

The cable is surface contact in the ordinary tray. The friction is heavy, not easy to drag.

Every small change of three-dimensional angle needs to design and manufacture a special elbow. The design and installation is extremely complex.

The accumulation of heat generated by cables in the enclosed cable tray accelerated the aging of cable surface. Once there is water in the cable tray, it is not easy to discharge.

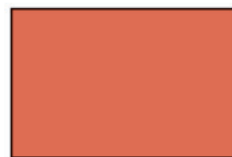
喷塑颜色色板



桔纹灰 (726)
DZ-S01



浅驼灰
DZ-S02



桔红
DZ-S03



象牙白
DZ-S04

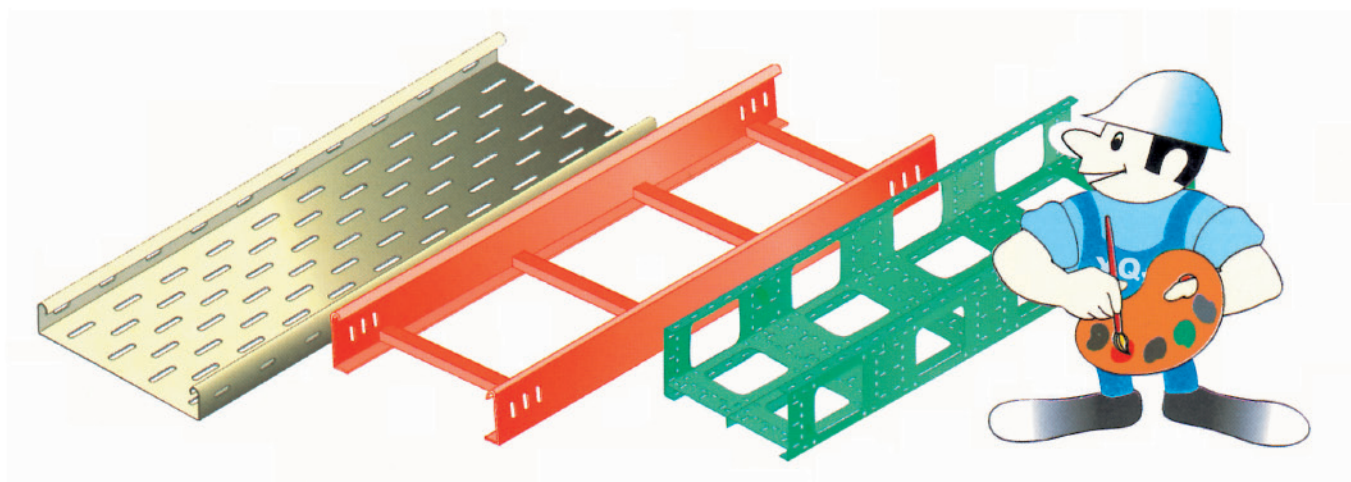


果绿
DZ-S05



银灰
DZ-S06

此色样仅供参考，可按客户要求订制。



Spray color palette



Orange grey
(726) DZ-S01



Pale camel ash
DZ-S02



Orange red
DZ-S03



Ivory
DZ-S04

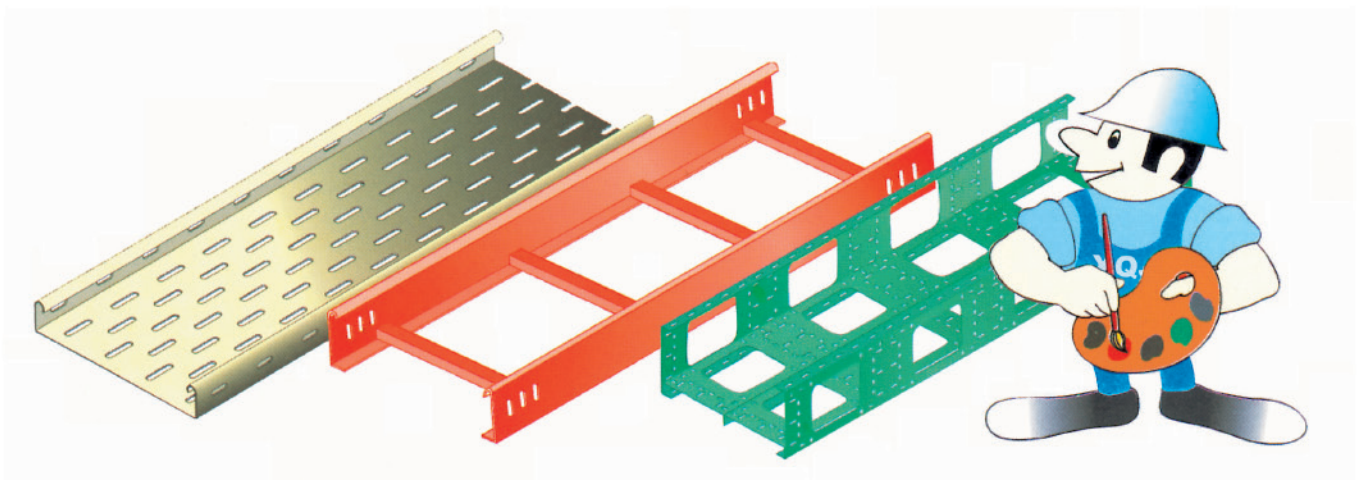


light green
DZ-S05



Silver grey
DZ-S06

This color sample is for reference only,
and can be customized according to the customer's requirements.





www.cnshilin.com

地址: 江苏省扬中市新坝镇江城路28号
电话: 0511 88418040
传真: 0511 88416878
E-mail: SL9540@126.com

Add: No. 28 Jiangcheng Road , Xinba, Yangzhong city,
Jiangsu, China
Tel: 0511 88418040
Fax: 0511 88416878
E-mail: SL9540@126.com

如有改动, 恕不另行通知
Subject to change without prior notice